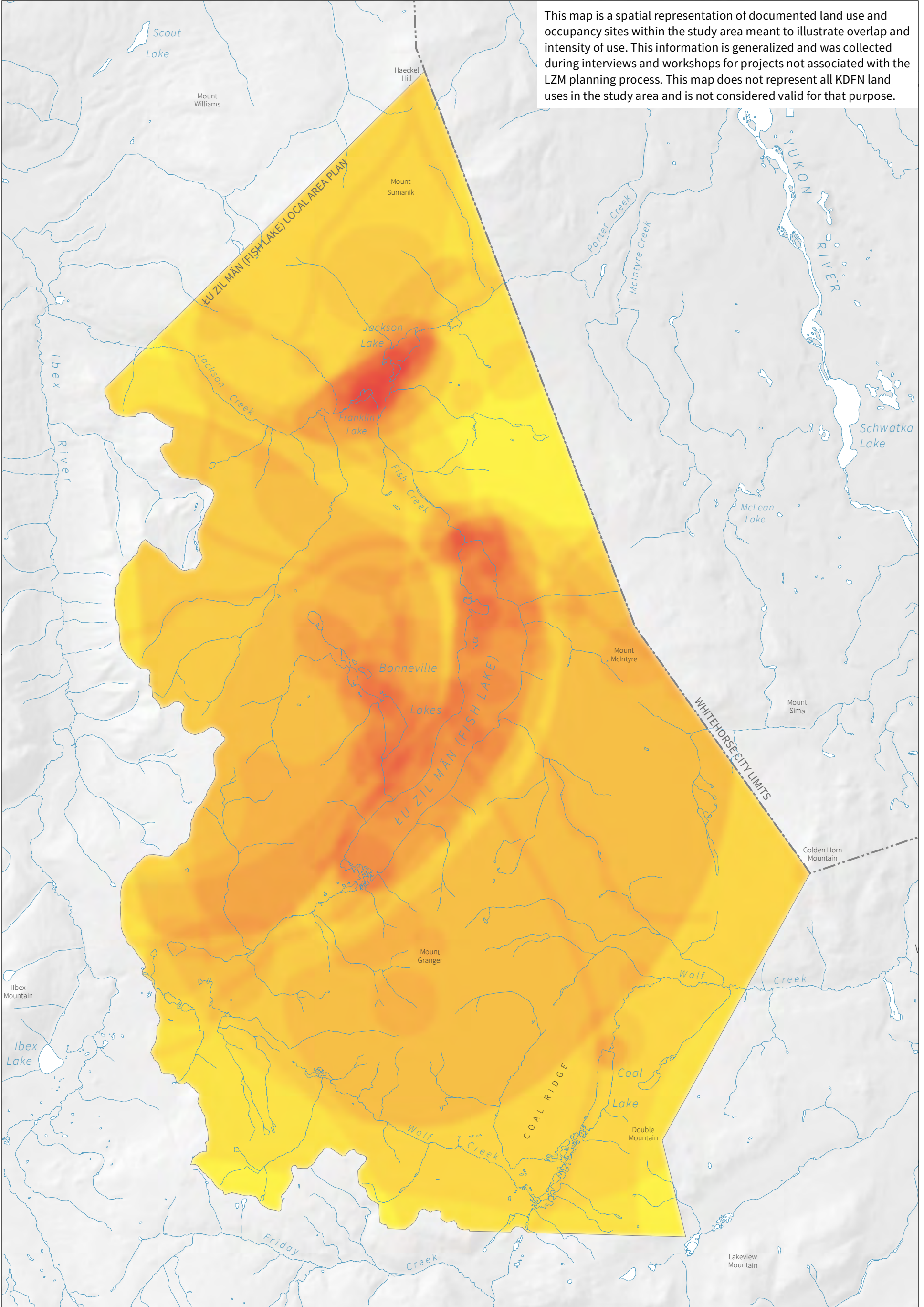


This map is a spatial representation of documented land use and occupancy sites within the study area meant to illustrate overlap and intensity of use. This information is generalized and was collected during interviews and workshops for projects not associated with the LZM planning process. This map does not represent all KDFN land uses in the study area and is not considered valid for that purpose.



©2022 KWANLIN DŪN FIRST NATION

Overlapping Use Areas (Documented to Date)

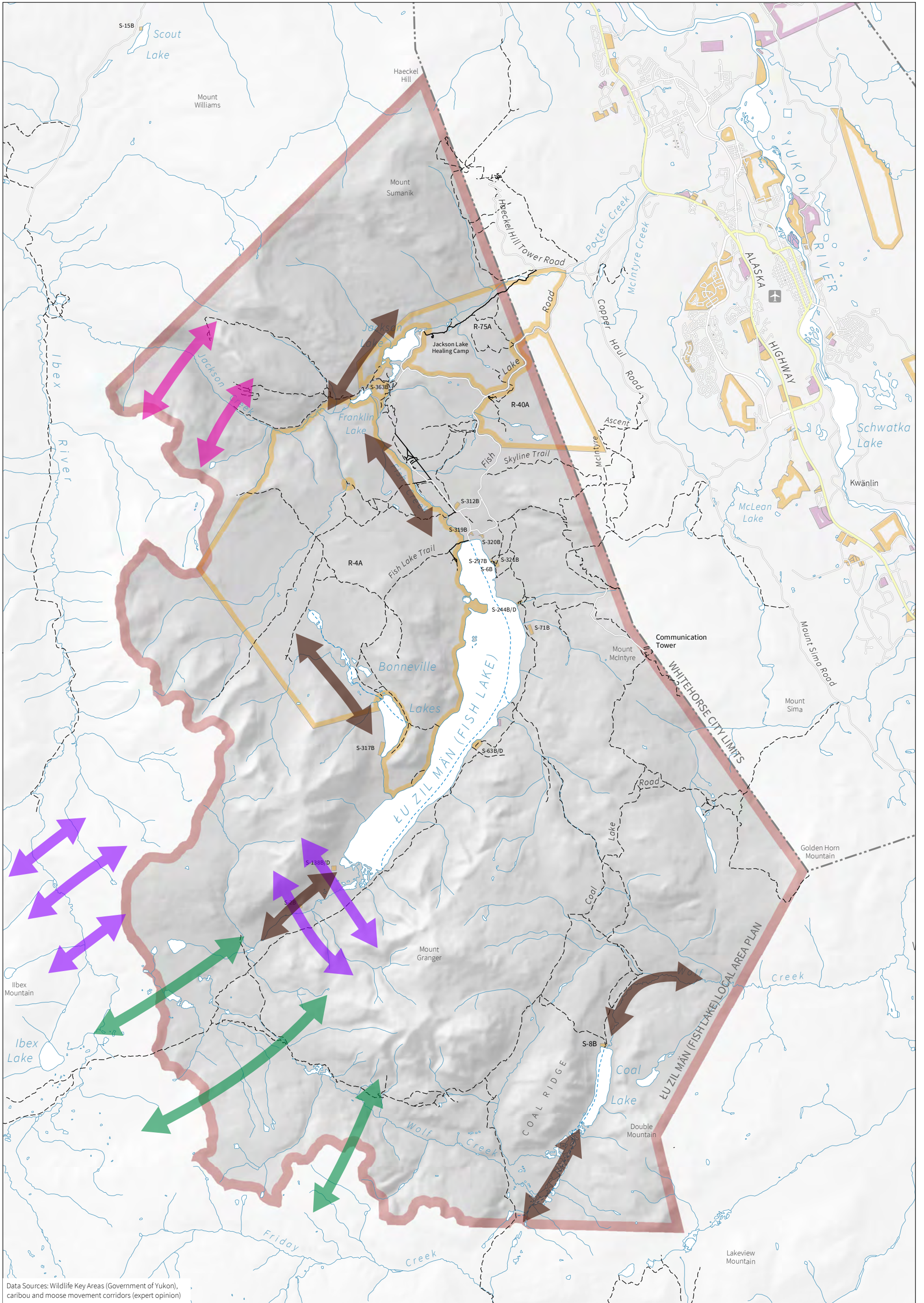


KWANLIN DŪN FIRST NATION

Łu Zil Män (Fish Lake)

MAP 2: KDFN Documented Land Use





Data Sources: Wildlife Key Areas (Government of Yukon), caribou and moose movement corridors (expert opinion)

©2022 KWANLIN DÜN FIRST NATION

Planning Boundary

Lu Zil Män (Fish Lake)

First Nations Settlement Lands

Kwanlin Dün

Ta'an Kwäch'an Council

Thinhorn Sheep Key Areas

Movement corridor (survey data)

Movement corridor (anecdotal information)

Woodland Caribou

Inferred movement corridor

Moose

Inferred movement corridor

Transportation

Primary road

Secondary road

Local road

Access road

Trail

Winter route

KWANLIN DÜN FIRST NATION

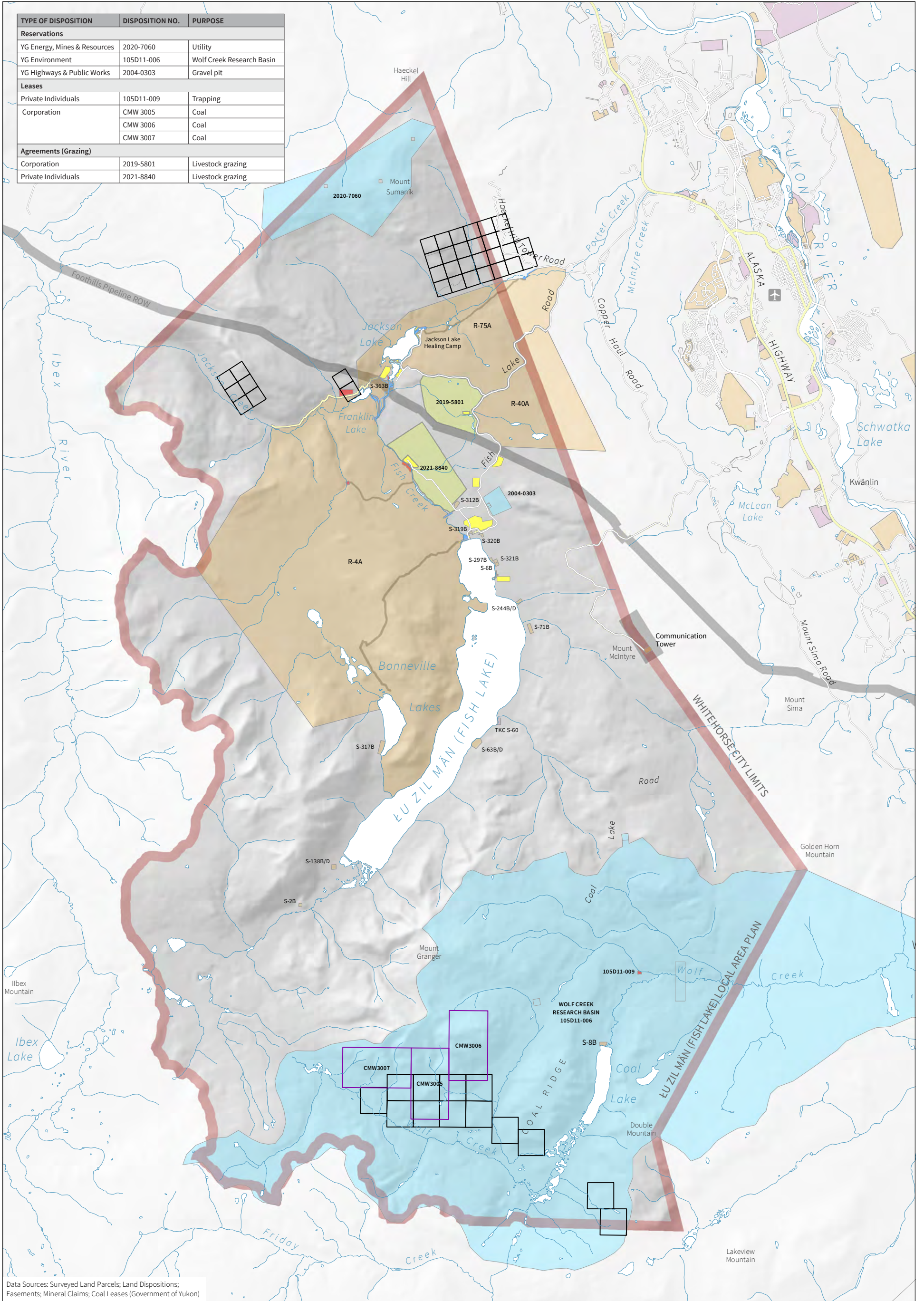
Lu Zil Män (Fish Lake)

MAP 3: CARIBOU, MOOSE and SHEEP

Main Movement Zones



TYPE OF DISPOSITION	DISPOSITION NO.	PURPOSE
Reservations		
YG Energy, Mines & Resources	2020-7060	Utility
YG Environment	105D11-006	Wolf Creek Research Basin
YG Highways & Public Works	2004-0303	Gravel pit
Leases		
Private Individuals	105D11-009	Trapping
Corporation	CMW 3005	Coal
	CMW 3006	Coal
	CMW 3007	Coal
Agreements (Grazing)		
Corporation	2019-5801	Livestock grazing
Private Individuals	2021-8840	Livestock grazing



Data Sources: Surveyed Land Parcels; Land Dispositions; Easements; Mineral Claims; Coal Leases (Government of Yukon)

©2022 KWANLIN DÜN FIRST NATION

Planning Boundary

- Lu Zil Män (Fish Lake)
- First Nations Settlement Lands**
- Kwanlin Dün
- Ta'an Kwäch'an Council

Land Tenure

- Privately titled land parcel
- Surveyed land parcel
- Grazing agreement
- Utility license

Lease

- Lease
- Reservation
- Agreement for Sale
- Easement
- Mineral claim
- Coal lease

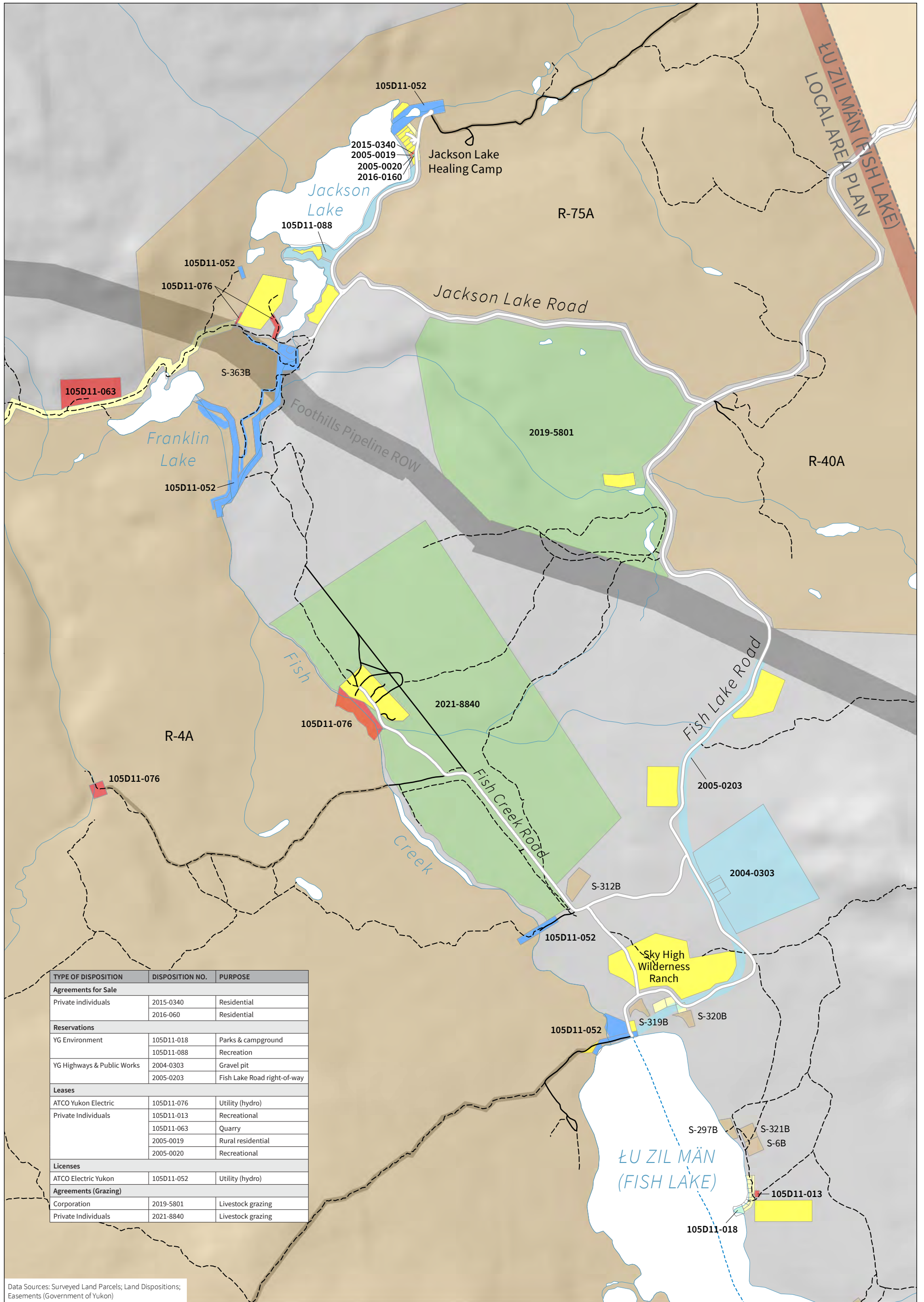
Transportation

- Primary road
- Secondary road
- Local road

KWANLIN DÜN FIRST NATION

**Lu Zil Män (Fish Lake)
MAP 4: Land Tenure**





Data Sources: Surveyed Land Parcels; Land Dispositions; Easements (Government of Yukon)

©2022 KWANLIN DÜN FIRST NATION

Planning Boundary

- Ƙu Zil Män (Fish Lake)

First Nations Settlement Lands

- Kwanlin Dün
- Ta'an Kwäch'än Council

Land Tenure

- Privately titled land parcel
- Surveyed land parcel
- Grazing agreement
- Utility license

Lease

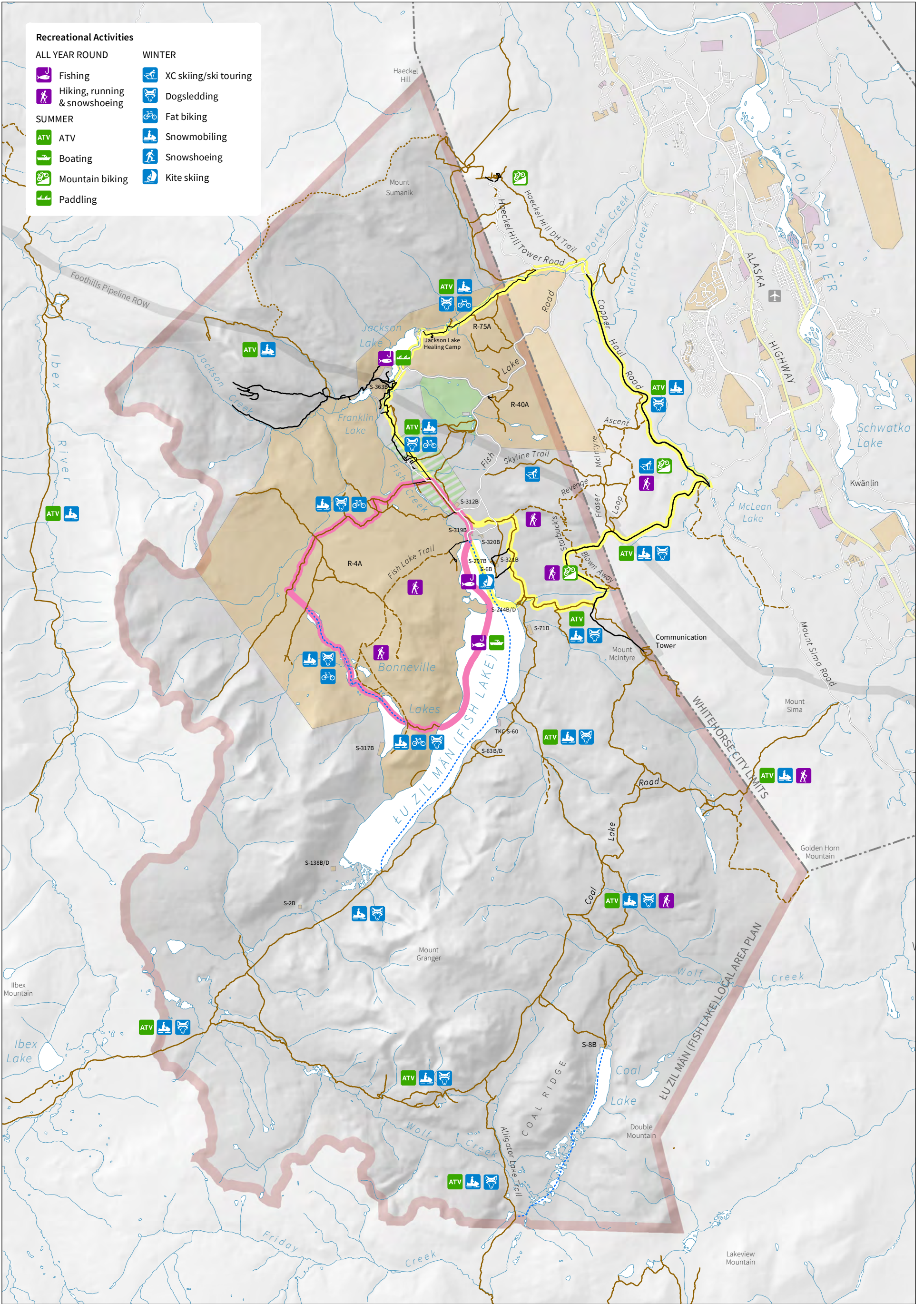
- Reservation
- Agreement for Sale
- Easement

Transportation

- Primary road
- Secondary road
- Local road
- Access road
- Trail
- Winter route

KWANLIN DÜN FIRST NATION
Ƙu Zil Män (Fish Lake)
MAP 5: Land Tenure
Fish and Jackson Lake Roads

Metres 0 500 1,000 1,500



©2022 KWANLIN DÜN FIRST NATION

Planning Boundary

- Lu Zil Män (Fish Lake)
- First Nations Settlement Lands**
- Kwanlin Dün
- Ta'an Kwäch'an Council

Recreation Routes

- Bonneville Lakes loop
- McIntyre loop

Trail Network

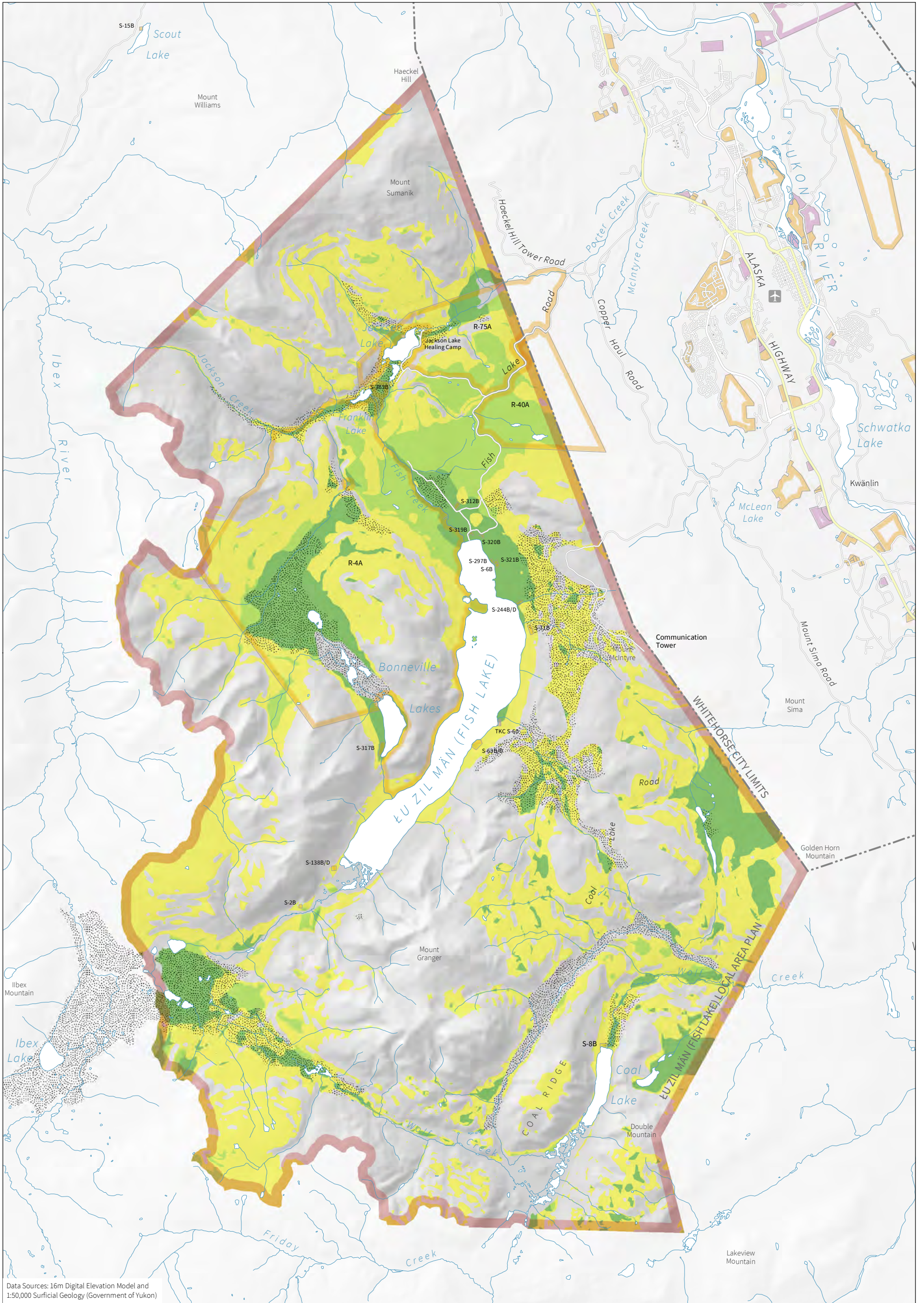
- Access road
- 4WD road
- Double track/ATV trail
- Singletrack trail
- Overland route
- Winter route

Transportation

- Agriculture land disposition
- Agriculture land application
- Easement
- Primary road
- Secondary road
- Local road

KWANLIN DÜN FIRST NATION
Lu Zil Män (Fish Lake)
MAP 6: Common Recreational
Uses and Patterns





Data Sources: 16m Digital Elevation Model and 1:50,000 Surficial Geology (Government of Yukon)

©2022 KWANLIN DÜN FIRST NATION

Planning Boundary

Łu Zil Män (Fish Lake)

First Nations Settlement Lands

Kwanlin Dün

Ta'an Kwäch'an Council

Development Suitability

Good development potential

Good development potential with some areas of constraints

Moderate development potential

Low to poor development potential

Aggregate potential

Transportation

Primary road

Secondary road

Local road

KWANLIN DÜN FIRST NATION

Łu Zil Män (Fish Lake)

MAP 7: Development Potential

