

Personal Use Fuelwood Cutting Areas


Map: Dawson 1

Location: Clinton Creek Road

Map produced on: April 02, 2024

Map expires on: March 31, 2025

Personal Use Fuelwood Areas

 Designated Areas with additional terms and conditions

 Designated Areas

Features of Interest

 Gate Locations

 Designated Access Points

Land Tenure

 Municipal Boundaries

 Land Dispositions

 Surveyed Land Parcels

 Land Notations

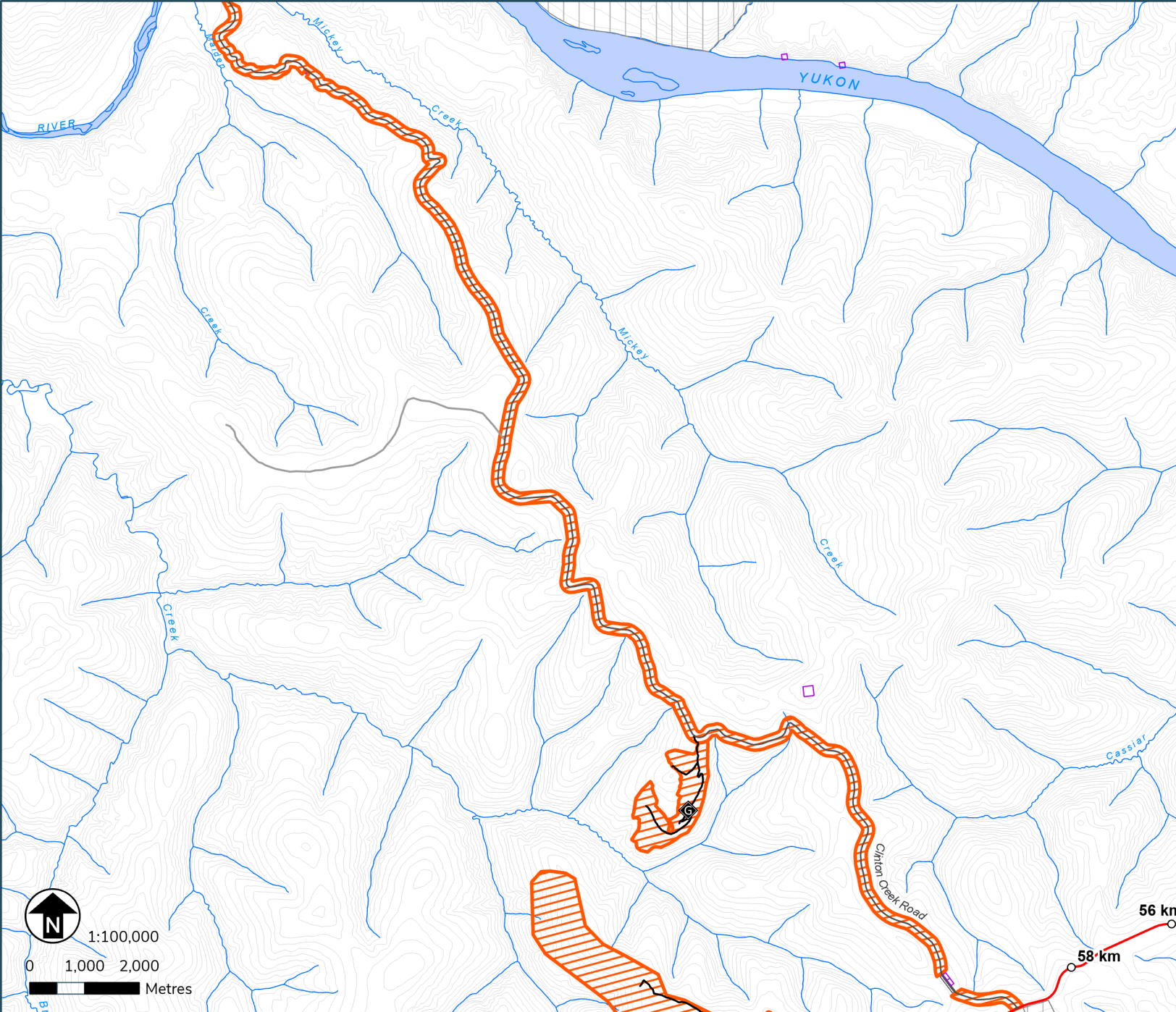
 Parks and Protected Areas

First Nation Settlement Lands

 Surveyed First Nation Settlement Lands

 Unsurveyed FN Interim Protected Lands

 Unsurveyed FN Settlement Lands



Terms & Conditions Reference:

N/A

This map is not your permit. Permits can be acquired at Compliance, Monitoring and Inspections offices or online. Terms and conditions apply to all permits.
- To view up-to-date maps or apply online, please visit: yukon.ca
- For support email: forestry@yukon.ca
Data Sources: Yukon Government, Geomatics Yukon, and Forest Management Branch




Personal Use Fuelwood Cutting Areas

Map: Dawson 2
Location: Bruin Creek

Map produced on: April 02, 2024
Map expires on: March 31, 2025

Personal Use Fuelwood Areas

 Designated Areas with additional terms and conditions

 Designated Areas

Features of Interest

 Gate Locations

 Designated Access Points

Land Tenure

 Municipal Boundaries

 Land Dispositions

 Surveyed Land Parcels

 Land Notations

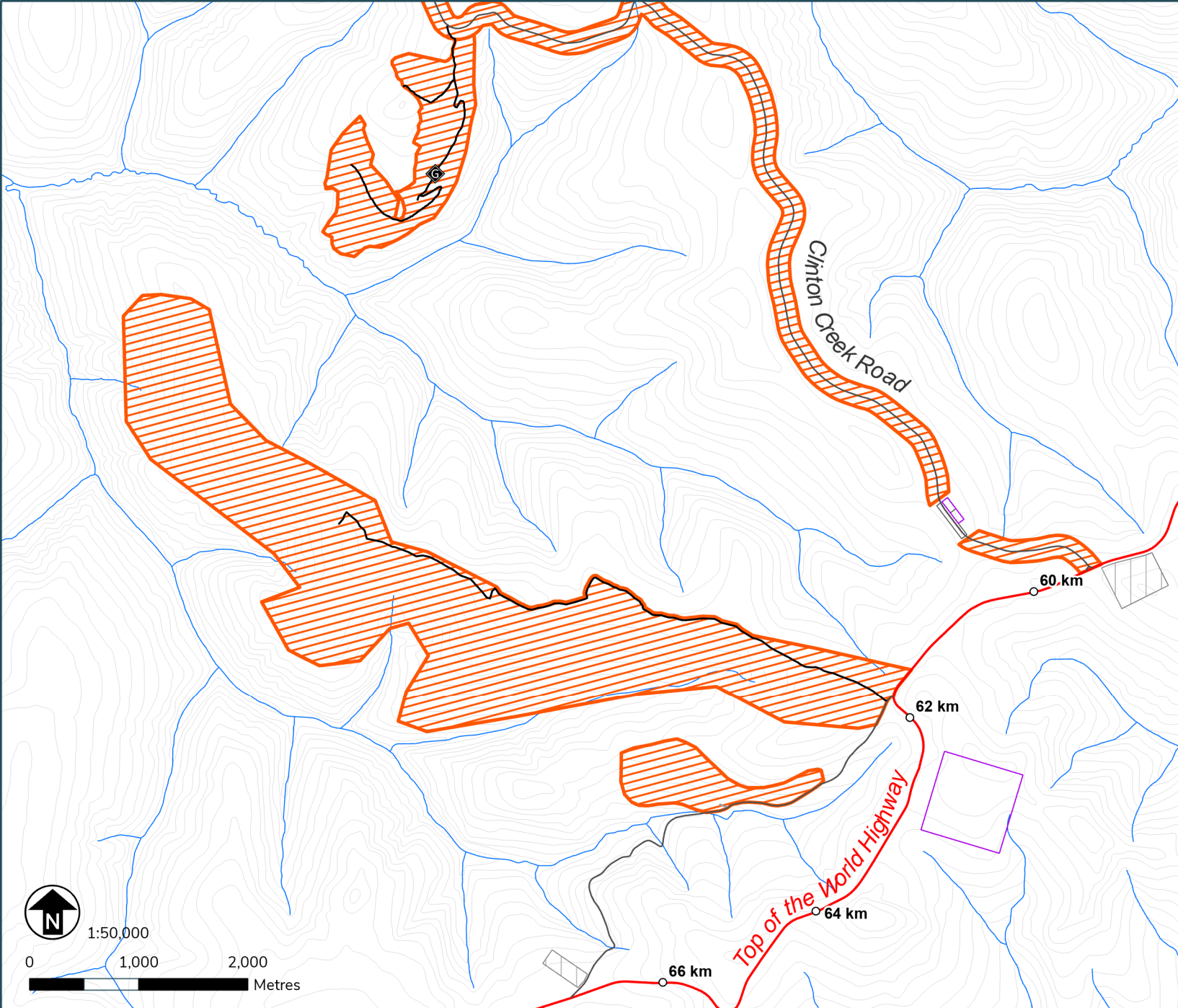
 Parks and Protected Areas

First Nation Settlement Lands

 Surveyed First Nation Settlement Lands

 Unsurveyed FN Interim Protected Lands

 Unsurveyed FN Settlement Lands



Terms & Conditions Reference:

N/A

This map is not your permit. Permits can be acquired at Compliance, Monitoring and Inspections offices or online. Terms and conditions apply to all permits.

- To view up-to-date maps or apply online, please visit: yukon.ca

- For support email: forestry@yukon.ca

Data Sources: Yukon Government, Geomatics Yukon, and Forest Management Branch




Personal Use Fuelwood Cutting Areas

Map: Dawson 3

Location: Bonanza Road / Grand Forks

Map produced on: April 02, 2024
Map expires on: March 31, 2025

Personal Use Fuelwood Areas

 Designated Areas with additional terms and conditions

 Designated Areas

Features of Interest

 Gate Locations

 Designated Access Points

Land Tenure

 Municipal Boundaries

 Land Dispositions

 Surveyed Land Parcels

 Land Notations

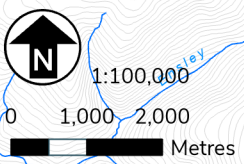
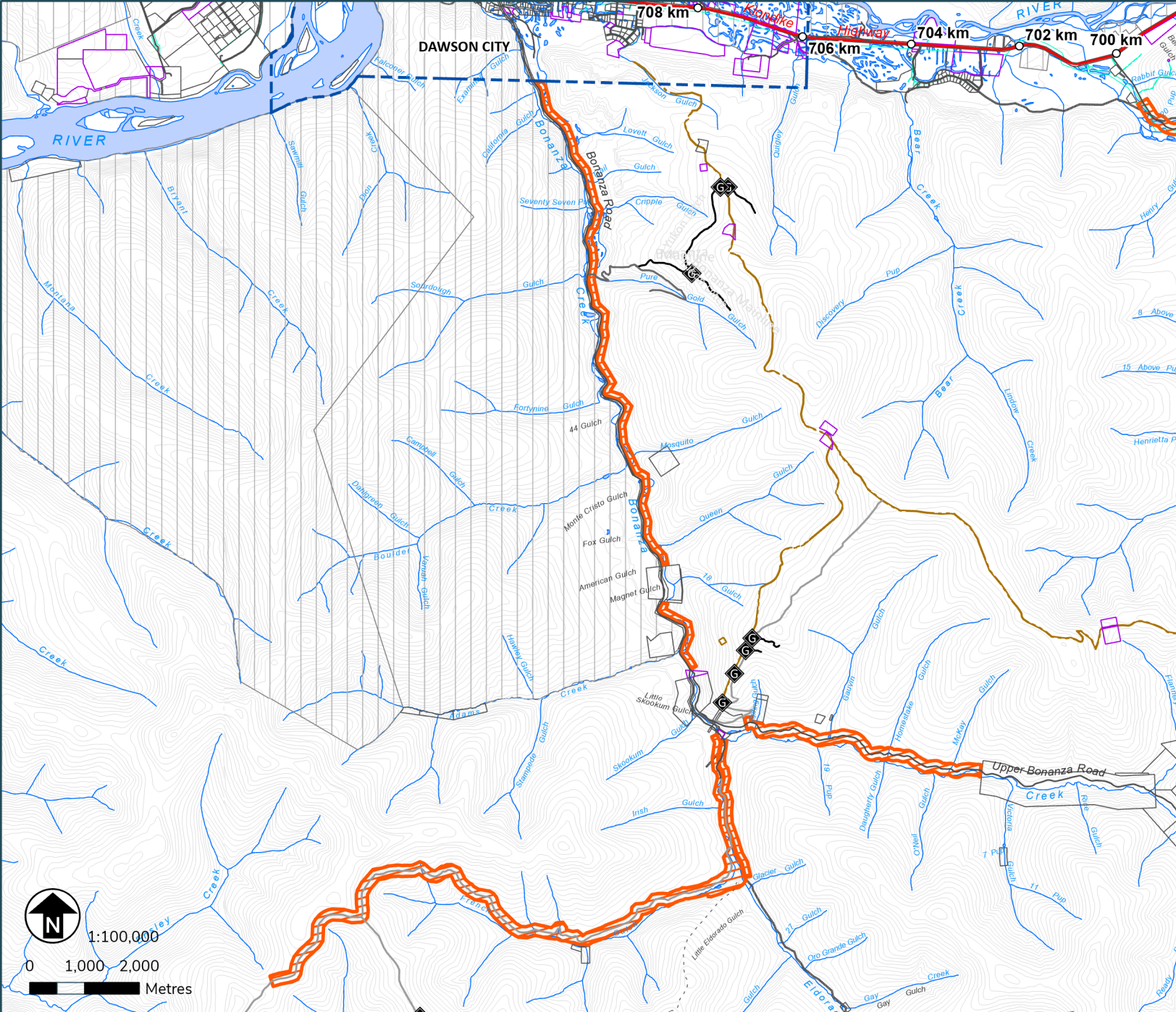
 Parks and Protected Areas

First Nation Settlement Lands

 Surveyed First Nation Settlement Lands

 Unsurveyed FN Interim Protected Lands

 Unsurveyed FN Settlement Lands



Terms & Conditions Reference:

N/A

This map is not your permit. Permits can be acquired at Compliance, Monitoring and Inspections offices or online. Terms and conditions apply to all permits.
- To view up-to-date maps or apply online, please visit: yukon.ca
- For support email: forestry@yukon.ca
Data Sources: Yukon Government, Geomatics Yukon, and Forest Management Branch



Personal Use Fuelwood Cutting Areas


Map: Dawson 4

Location: Hunker Creek Road

Map produced on: April 02, 2024

Map expires on: March 31, 2025

Personal Use Fuelwood Areas

 Designated Areas with additional terms and conditions

 Designated Areas

Features of Interest

 Gate Locations

 Designated Access Points

Land Tenure

 Municipal Boundaries

 Land Dispositions

 Surveyed Land Parcels

 Land Notations

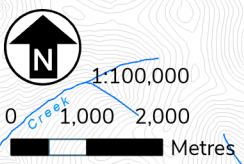
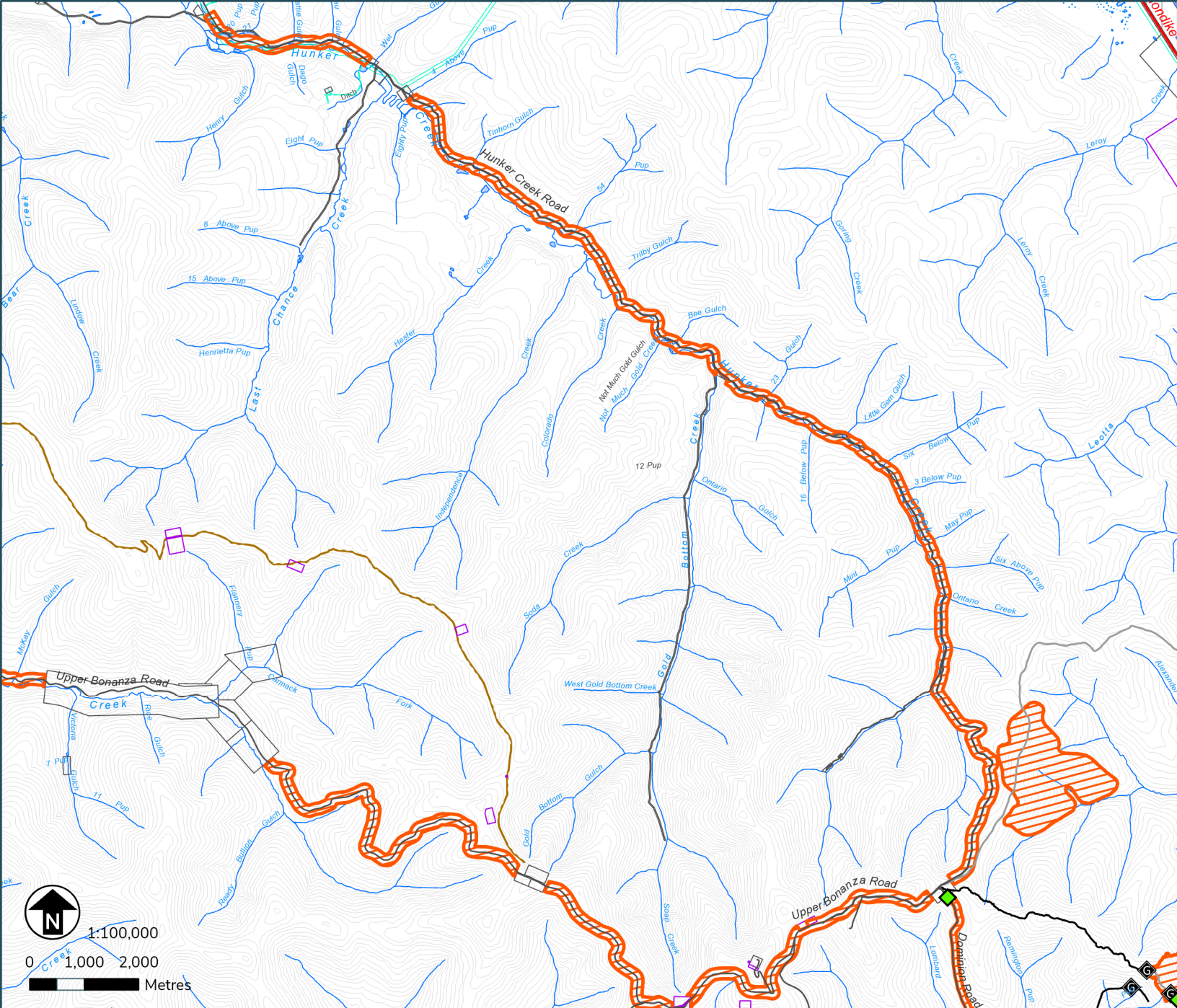
 Parks and Protected Areas

First Nation Settlement Lands

 Surveyed First Nation Settlement Lands

 Unsurveyed FN Interim Protected Lands

 Unsurveyed FN Settlement Lands



Terms & Conditions Reference:

N/A

This map is not your permit. Permits can be acquired at Compliance, Monitoring and Inspections offices or online. Terms and conditions apply to all permits.
 - To view up-to-date maps or apply online, please visit: yukon.ca
 - For support email: forestry@yukon.ca
 Data Sources: Yukon Government, Geomatics Yukon, and Forest Management Branch




Personal Use Fuelwood Cutting Areas

Map: Dawson 5
Location: Dempster Highway

Map produced on: April 02, 2024
Map expires on: March 31, 2025

Personal Use Fuelwood Areas

 Designated Areas with additional terms and conditions

 Designated Areas

Features of Interest

 Gate Locations

 Designated Access Points

Land Tenure

 Municipal Boundaries

 Land Dispositions

 Surveyed Land Parcels

 Land Notations

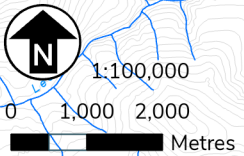
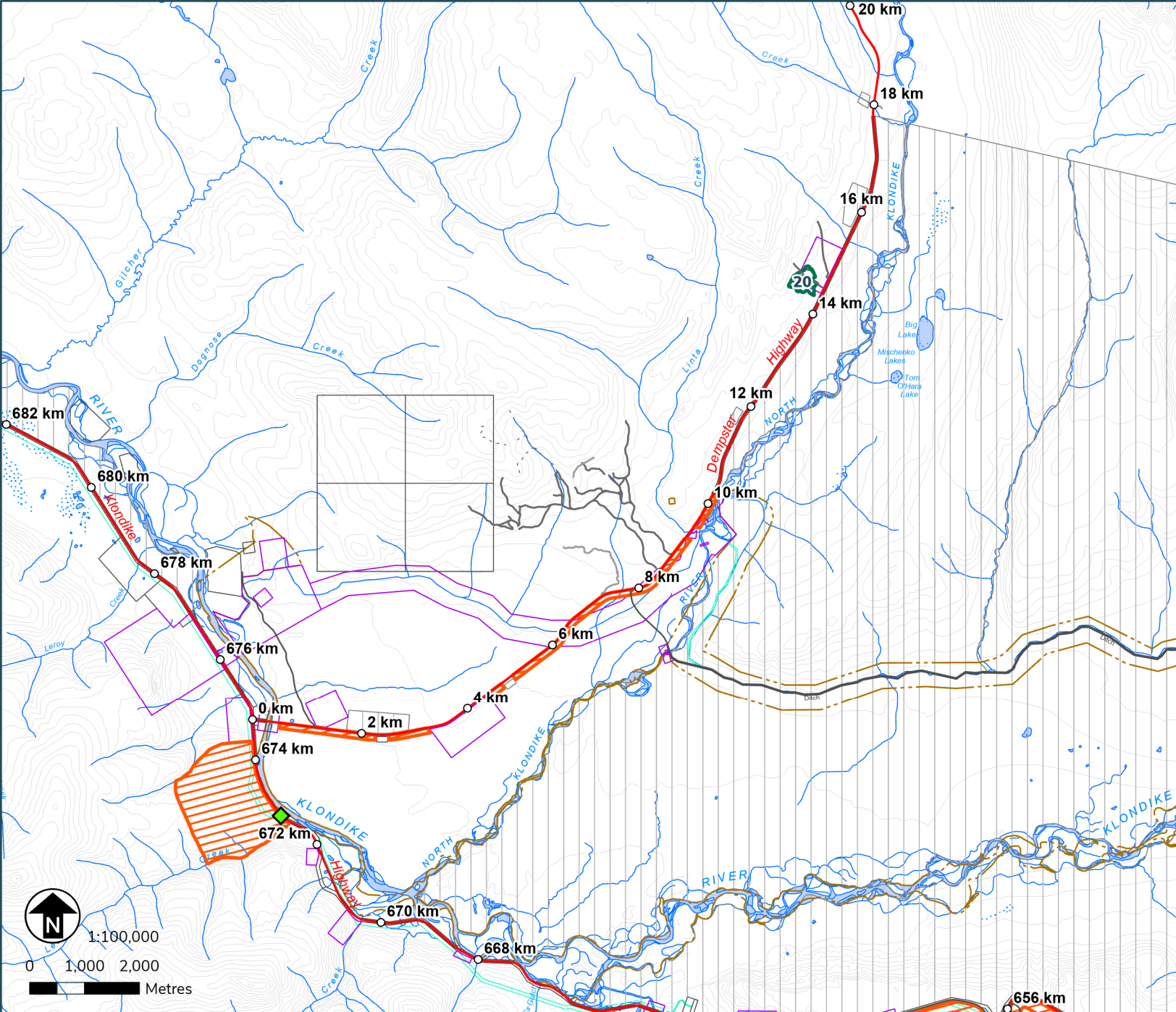
 Parks and Protected Areas

First Nation Settlement Lands

 Surveyed First Nation Settlement Lands

 Unsurveyed FN Interim Protected Lands

 Unsurveyed FN Settlement Lands



Terms & Conditions Reference:

20. Access to the harvest area is restricted to frozen ground conditions only.

This map is not your permit. Permits can be acquired at Compliance, Monitoring and Inspections offices or online. Terms and conditions apply to all permits.
 - To view up-to-date maps or apply online, please visit: yukon.ca
 - For support email: forestry@yukon.ca
 Data Sources: Yukon Government, Geomatics Yukon, and Forest Management Branch




Personal Use Fuelwood Cutting Areas

Map: Dawson 6

Location: Dempster Highway

Map produced on: April 02, 2024
Map expires on: March 31, 2025

Personal Use Fuelwood Areas

 Designated Areas with additional terms and conditions

 Designated Areas

Features of Interest

 Gate Locations

 Designated Access Points

Land Tenure

 Municipal Boundaries

 Land Dispositions

 Surveyed Land Parcels

 Land Notations

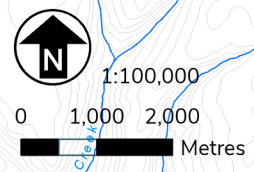
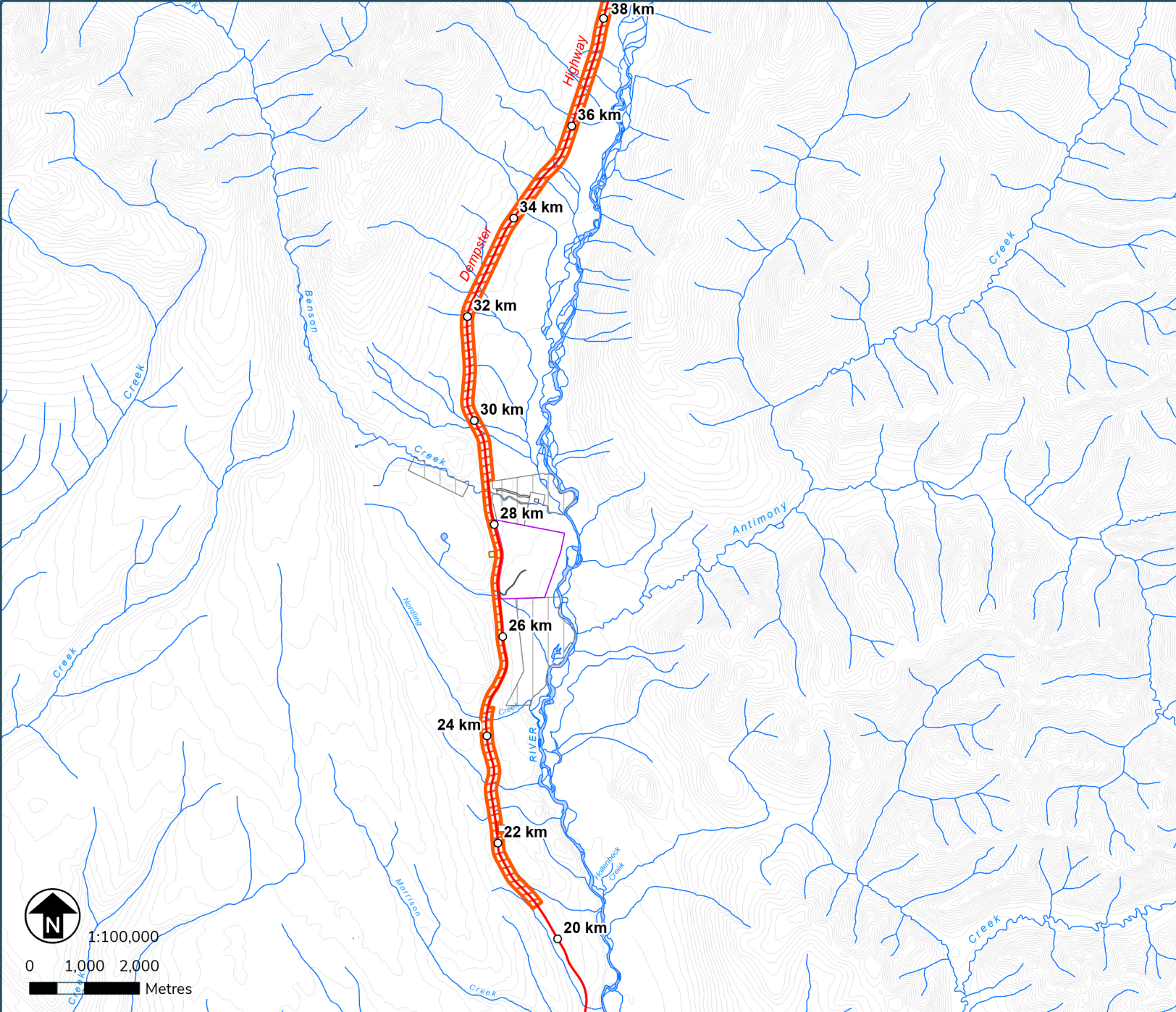
 Parks and Protected Areas

First Nation Settlement Lands

 Surveyed First Nation Settlement Lands

 Unsurveyed FN Interim Protected Lands

 Unsurveyed FN Settlement Lands



Terms & Conditions Reference:

N/A

This map is not your permit. Permits can be acquired at Compliance, Monitoring and Inspections offices or online. Terms and conditions apply to all permits.

- To view up-to-date maps or apply online, please visit: yukon.ca
- For support email: forestry@yukon.ca

Data Sources: Yukon Government, Geomatics Yukon, and Forest Management Branch




Personal Use Fuelwood Cutting Areas

Map: Dawson 7

Location: Dempster Highway

Map produced on: April 02, 2024
Map expires on: March 31, 2025

Personal Use Fuelwood Areas

 Designated Areas with additional terms and conditions

 Designated Areas

Features of Interest

 Gate Locations

 Designated Access Points

Land Tenure

 Municipal Boundaries

 Land Dispositions

 Surveyed Land Parcels

 Land Notations

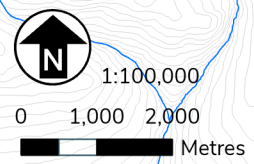
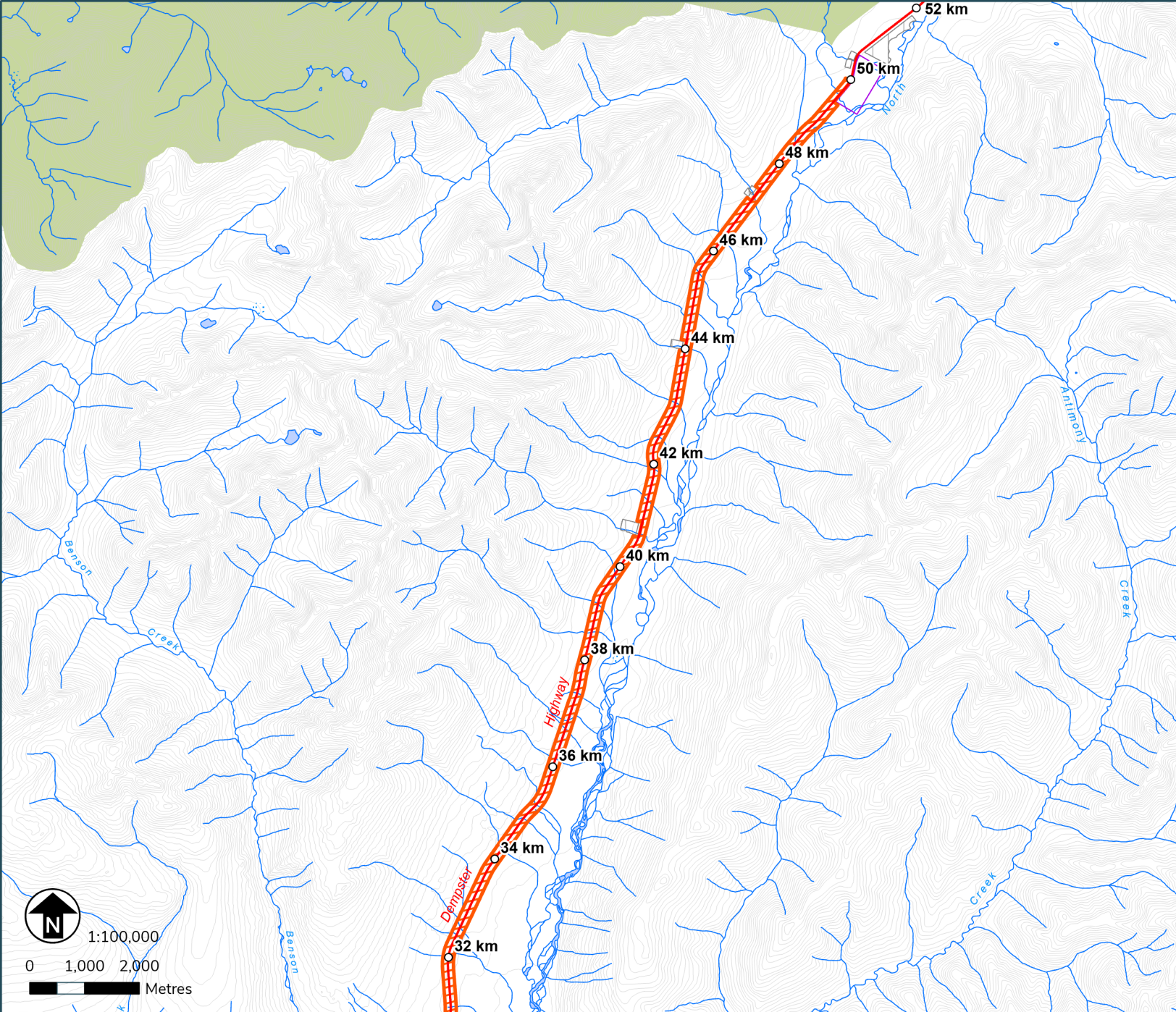
 Parks and Protected Areas

First Nation Settlement Lands

 Surveyed First Nation Settlement Lands

 Unsurveyed FN Interim Protected Lands

 Unsurveyed FN Settlement Lands

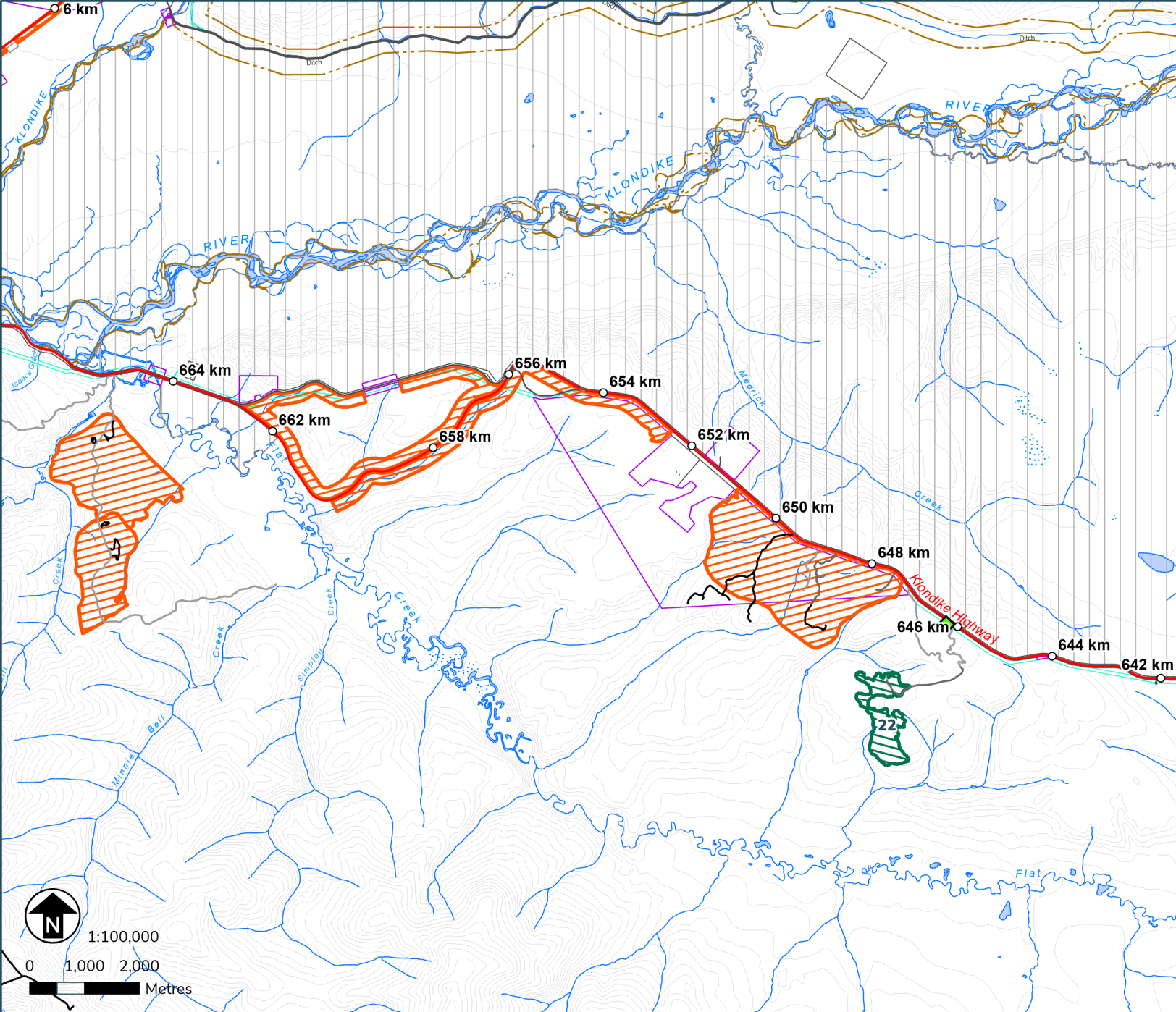


Terms & Conditions Reference:

N/A

This map is not your permit. Permits can be acquired at Compliance, Monitoring and Inspections offices or online. Terms and conditions apply to all permits.
- To view up-to-date maps or apply online, please visit: yukon.ca
- For support email: forestry@yukon.ca
Data Sources: Yukon Government, Geomatics Yukon, and Forest Management Branch





Personal Use Fuelwood Cutting Areas

Map: Dawson 8
 Location: Flat Creek / Klondike Highway

Map produced on: April 02, 2024
 Map expires on: March 31, 2025

- Personal Use Fuelwood Areas**
- Designated Areas with additional terms and conditions
 - Designated Areas
- Features of Interest**
- Gate Locations
 - Designated Access Points
- Land Tenure**
- Municipal Boundaries
 - Land Dispositions
 - Surveyed Land Parcels
 - Land Notations
 - Parks and Protected Areas
- First Nation Settlement Lands**
- Surveyed First Nation Settlement Lands
 - Unsurveyed FN Interim Protected Lands
 - Unsurveyed FN Settlement Lands



Terms & Conditions Reference:

22. Six cord limit per permit

This map is not your permit. Permits can be acquired at Compliance, Monitoring and Inspections offices or online. Terms and conditions apply to all permits.

- To view up-to-date maps or apply online, please visit: yukon.ca
- For support email: forestry@yukon.ca

Data Sources: Yukon Government, Geomatics Yukon, and Forest Management Branch



Personal Use Fuelwood Cutting Areas


Map: Dawson 9

Location: North Fork Road

Map produced on: April 02, 2024

Map expires on: March 31, 2025

Personal Use Fuelwood Areas

 Designated Areas with additional terms and conditions

 Designated Areas

Features of Interest

 Gate Locations

 Designated Access Points

Land Tenure

 Municipal Boundaries

 Land Dispositions

 Surveyed Land Parcels

 Land Notations

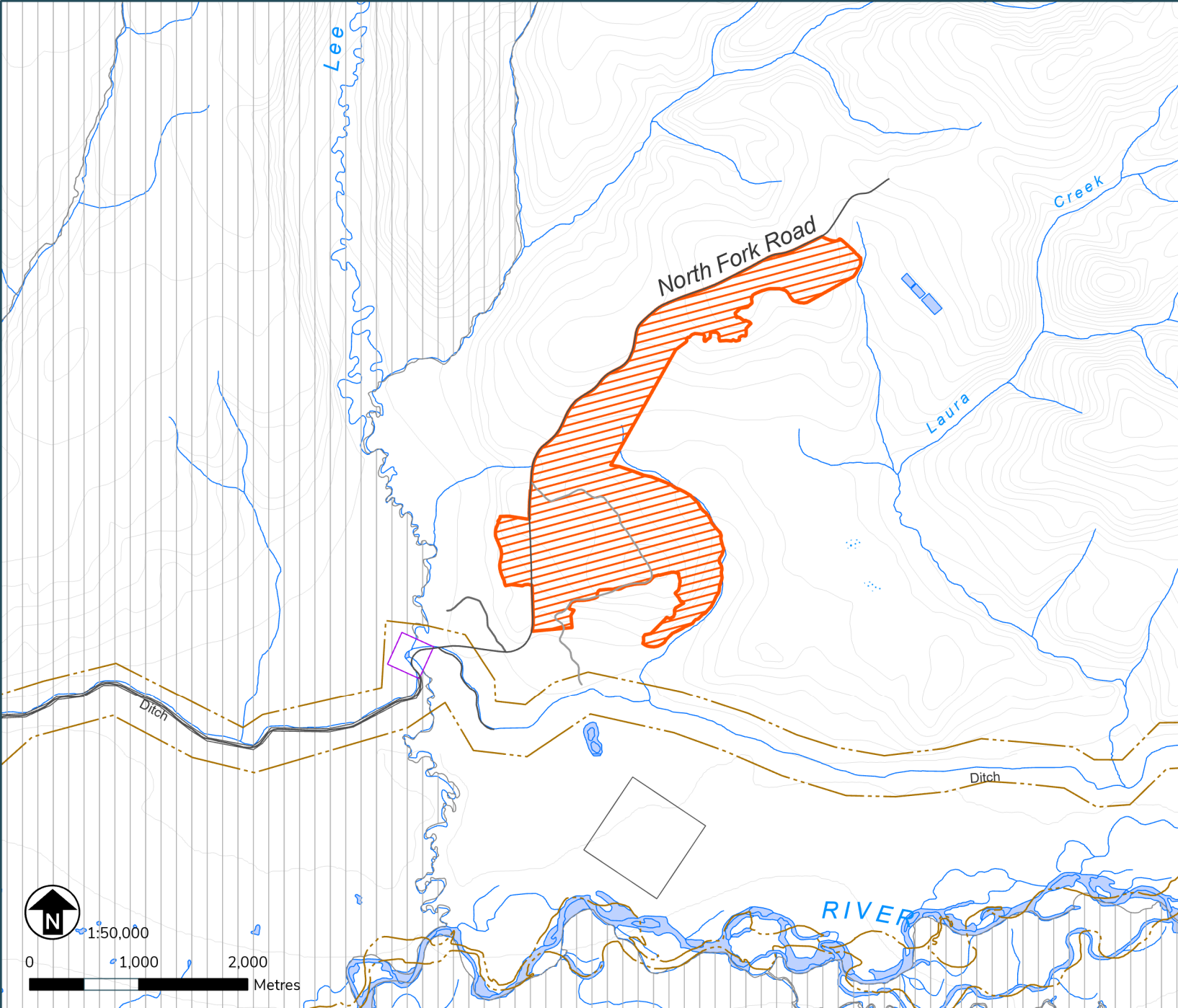
 Parks and Protected Areas

First Nation Settlement Lands

 Surveyed First Nation Settlement Lands

 Unsurveyed FN Interim Protected Lands

 Unsurveyed FN Settlement Lands



Terms & Conditions Reference:

N/A

This map is not your permit. Permits can be acquired at Compliance, Monitoring and Inspections offices or online. Terms and conditions apply to all permits.

- To view up-to-date maps or apply online, please visit: yukon.ca

- For support email: forestry@yukon.ca

Data Sources: Yukon Government, Geomatics Yukon, and Forest Management Branch




Personal Use Fuelwood Cutting Areas

Map: Dawson 10

Location: Top of the World Highway

Map produced on: April 02, 2024
Map expires on: March 31, 2025

Personal Use Fuelwood Areas

 Designated Areas with additional terms and conditions

 Designated Areas

Features of Interest


 Gate Locations

 Designated Access Points

Land Tenure

 Municipal Boundaries

 Land Dispositions

 Surveyed Land Parcels

 Land Notations

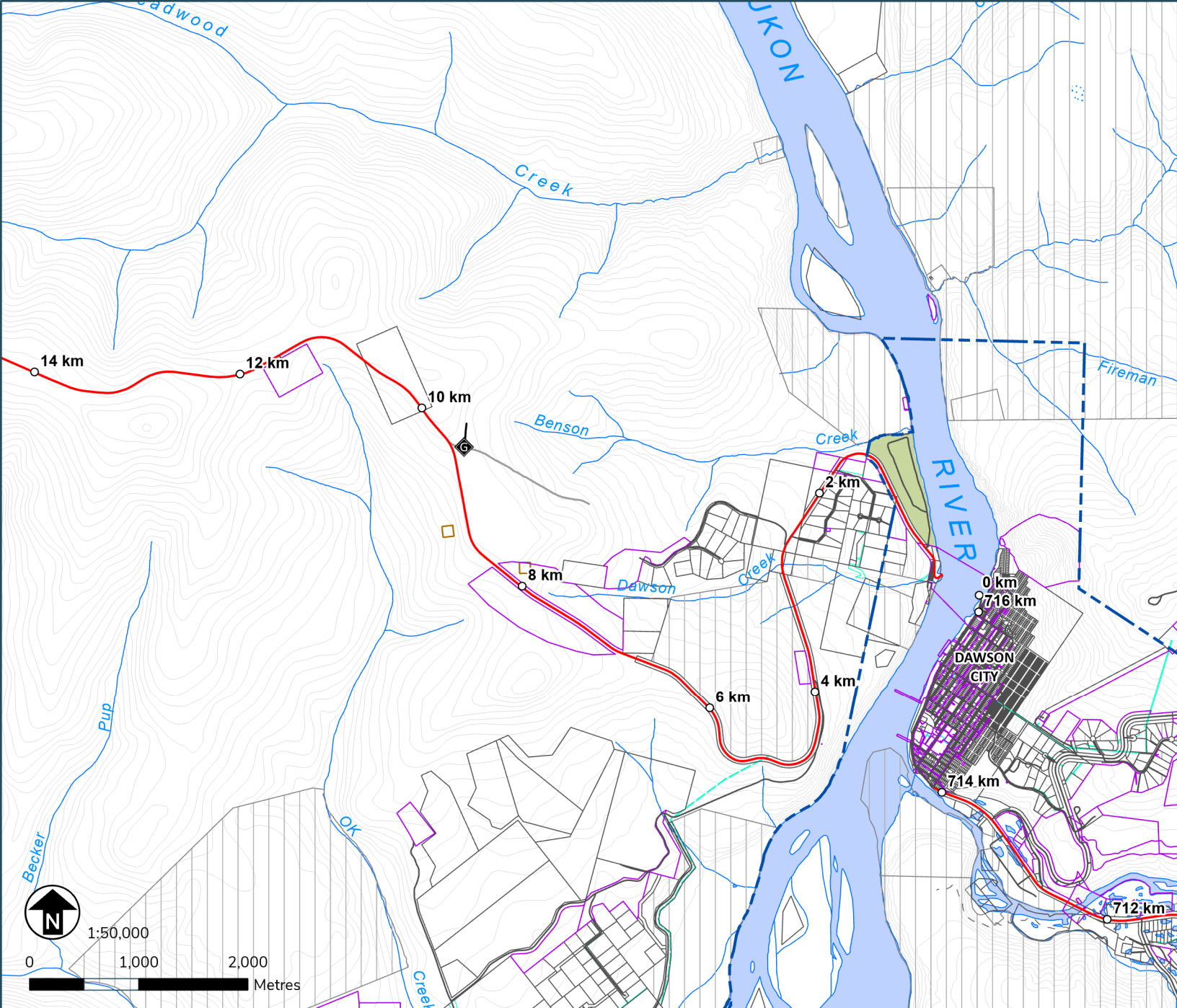
 Parks and Protected Areas

First Nation Settlement Lands

 Surveyed First Nation Settlement Lands

 Unsurveyed FN Interim Protected Lands

 Unsurveyed FN Settlement Lands



Terms & Conditions Reference:

N/A

This map is not your permit. Permits can be acquired at Compliance, Monitoring and Inspections offices or online. Terms and conditions apply to all permits.

- To view up-to-date maps or apply online, please visit: yukon.ca

- For support email: forestry@yukon.ca

Data Sources: Yukon Government, Geomatics Yukon, and Forest Management Branch




Personal Use Fuelwood Cutting Areas

Map: Dawson 11
Location: Mummy Pup

Map produced on: April 02, 2024
Map expires on: March 31, 2025

Personal Use Fuelwood Areas

 Designated Areas with additional terms and conditions

 Designated Areas

Features of Interest


 Gate Locations

 Designated Access Points

Land Tenure

 Municipal Boundaries

 Land Dispositions

 Surveyed Land Parcels

 Land Notations

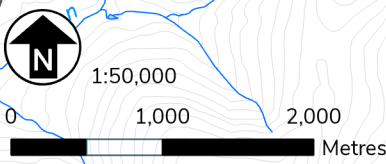
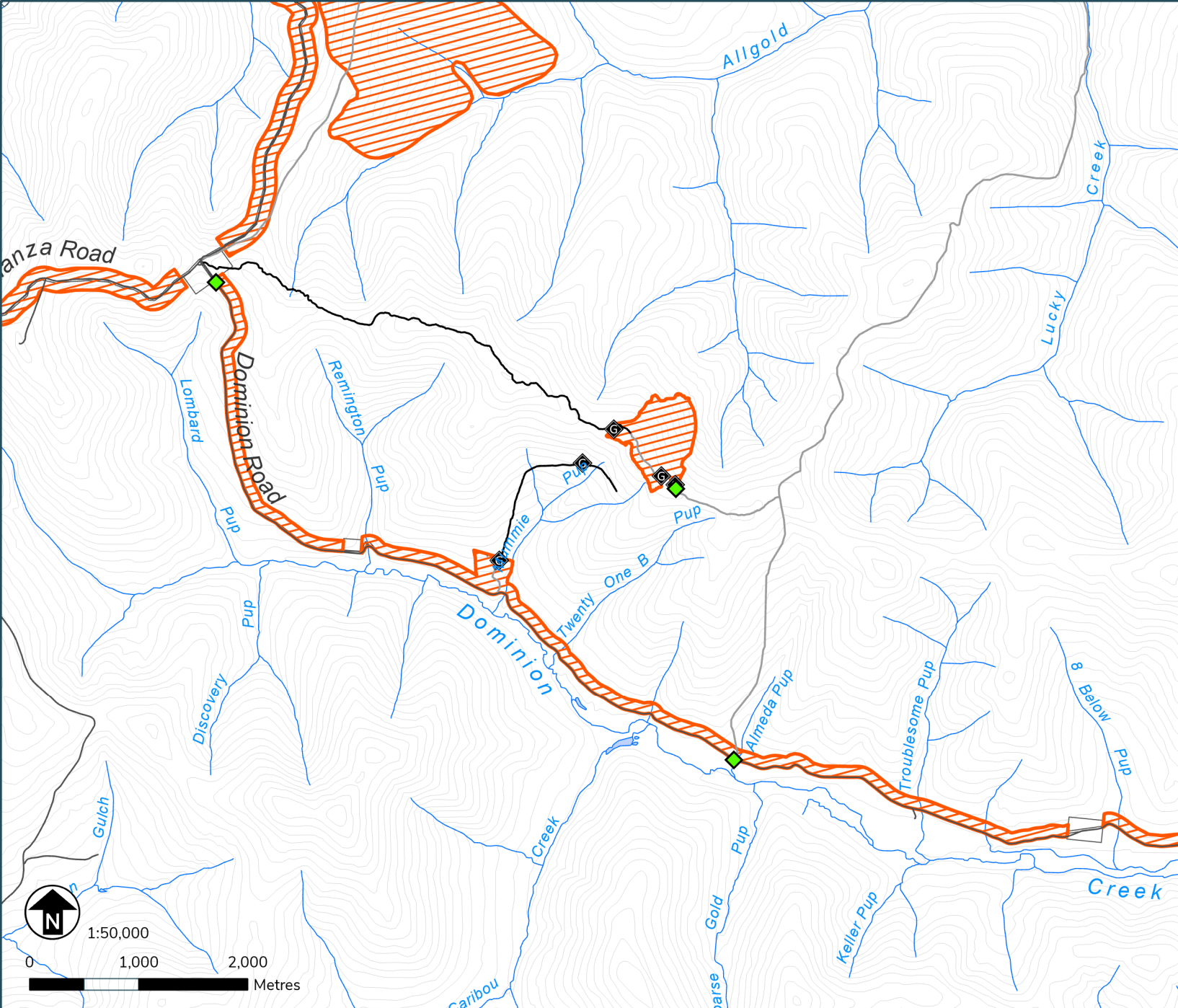
 Parks and Protected Areas

First Nation Settlement Lands

 Surveyed First Nation Settlement Lands

 Unsurveyed FN Interim Protected Lands

 Unsurveyed FN Settlement Lands



Terms & Conditions Reference:

N/A

This map is not your permit. Permits can be acquired at Compliance, Monitoring and Inspections offices or online. Terms and conditions apply to all permits.
 - To view up-to-date maps or apply online, please visit: yukon.ca
 - For support email: forestry@yukon.ca
 Data Sources: Yukon Government, Geomatics Yukon, and Forest Management Branch




Personal Use Fuelwood Cutting Areas

Map: Dawson 12
Location: Chapman Pup

Map produced on: April 02, 2024
Map expires on: March 31, 2025

Personal Use Fuelwood Areas

 Designated Areas with additional terms and conditions

 Designated Areas

Features of Interest

 Gate Locations

 Designated Access Points

Land Tenure

 Municipal Boundaries

 Land Dispositions

 Surveyed Land Parcels

 Land Notations

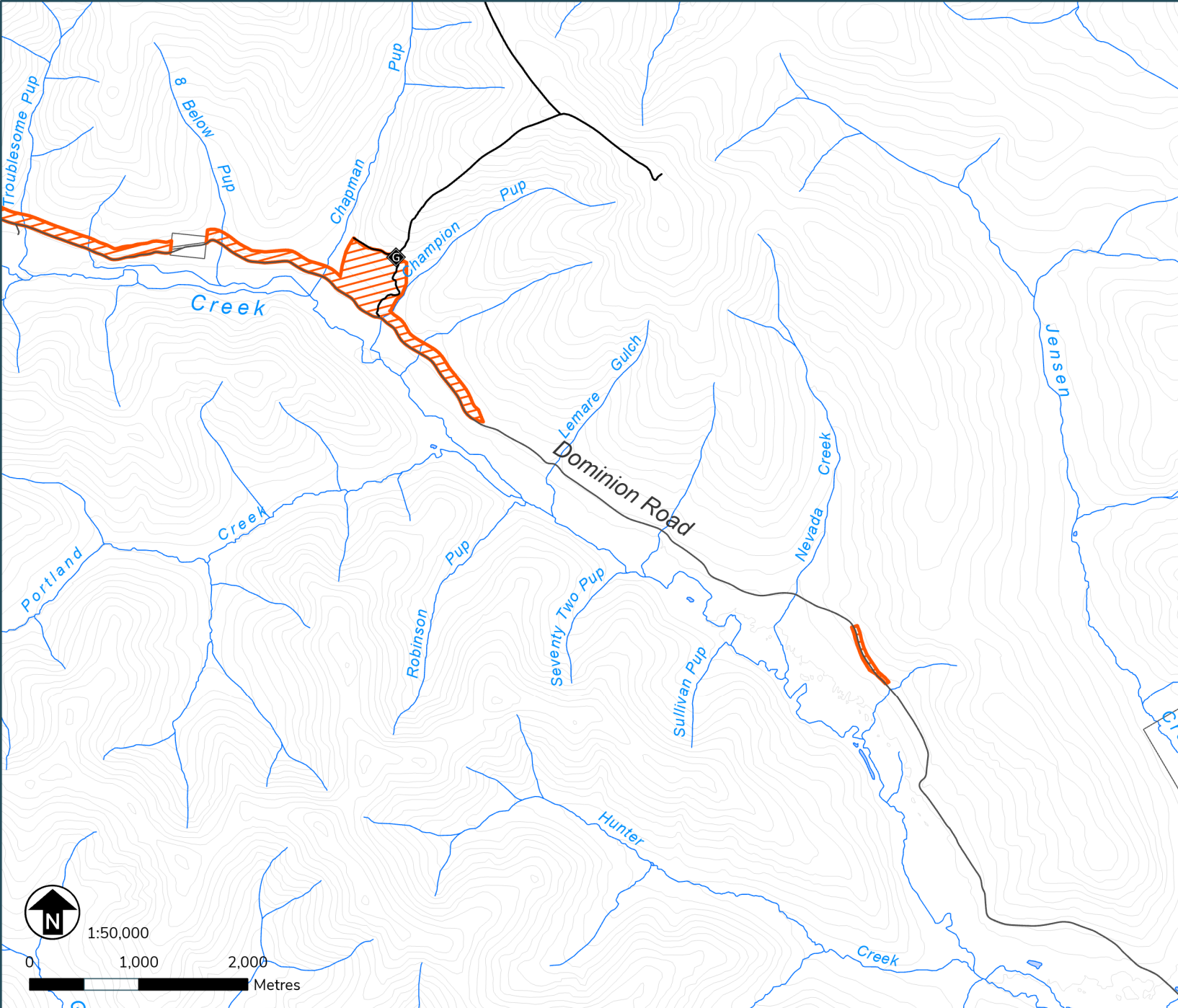
 Parks and Protected Areas

First Nation Settlement Lands

 Surveyed First Nation Settlement Lands

 Unsurveyed FN Interim Protected Lands

 Unsurveyed FN Settlement Lands



1:50,000



Terms & Conditions Reference:

N/A

This map is not your permit. Permits can be acquired at Compliance, Monitoring and Inspections offices or online. Terms and conditions apply to all permits.
 - To view up-to-date maps or apply online, please visit: yukon.ca
 - For support email: forestry@yukon.ca

Data Sources: Yukon Government, Geomatics Yukon, and Forest Management Branch



Personal Use Fuelwood Cutting Areas

Map: Dawson 13

Location: Dominion Road

Map produced on: May 02, 2024
Map expires on: March 31, 2025

Personal Use Fuelwood Areas

 Designated Areas with additional terms and conditions

 Designated Areas

Features of Interest

 Gate Locations

 Designated Access Points

Land Tenure

 Municipal Boundaries

 Land Dispositions

 Surveyed Land Parcels

 Land Notations

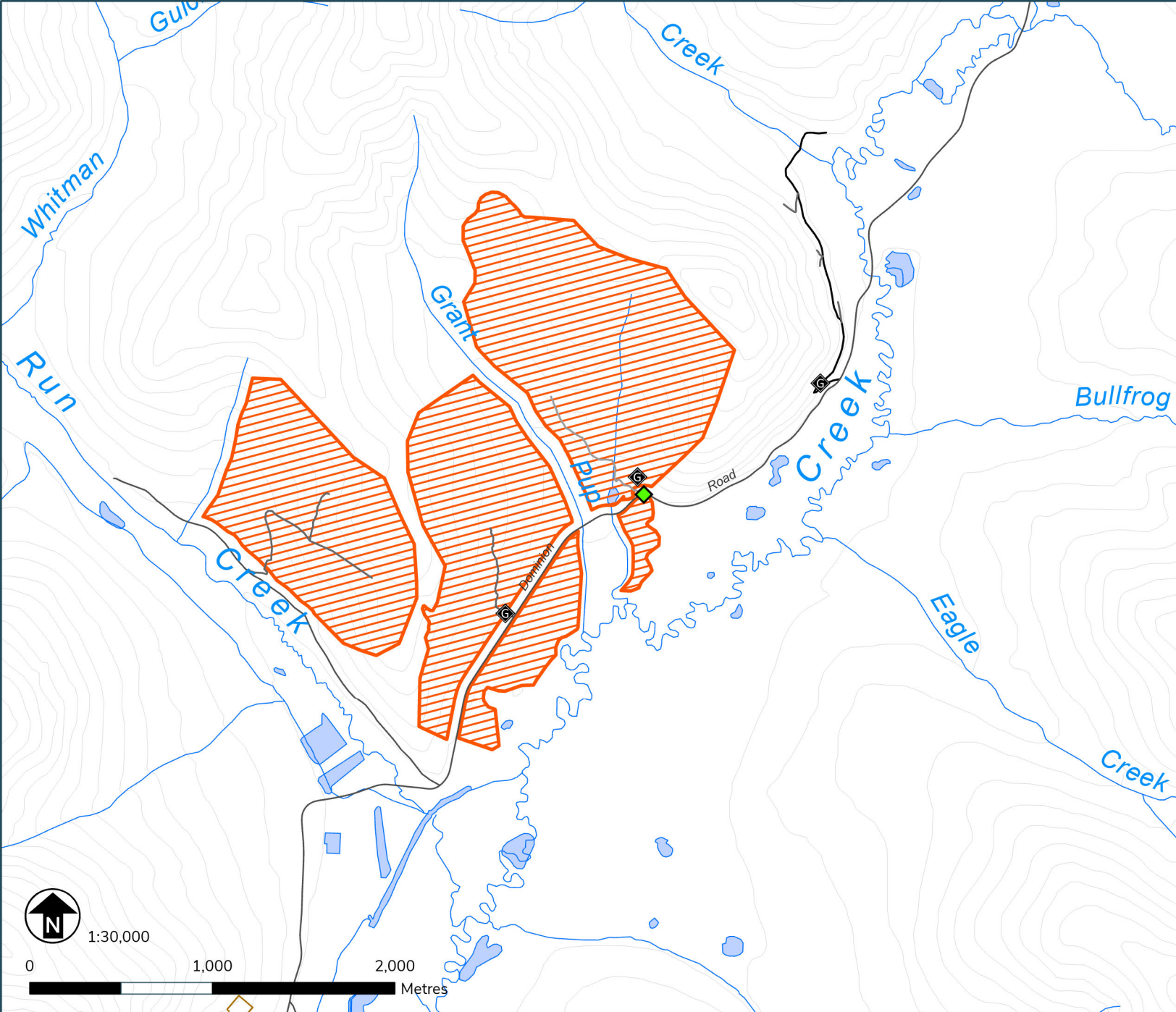
 Parks and Protected Areas

First Nation Settlement Lands

 Surveyed First Nation Settlement Lands

 Unsurveyed FN Interim Protected Lands

 Unsurveyed FN Settlement Lands



Terms & Conditions Reference:

N/A



This map is not your permit. Permits can be acquired at Compliance, Monitoring and Inspections offices or online. Terms and conditions apply to all permits.
- To view up-to-date maps or apply online, please visit: yukon.ca
- For support email: forestry@yukon.ca
Data Sources: Yukon Government, Geomatics Yukon, and Forest Management Branch





Personal Use Fuelwood Cutting Areas




Map: Dawson 14
Location: French Gulch

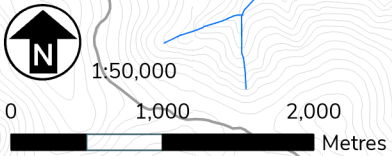
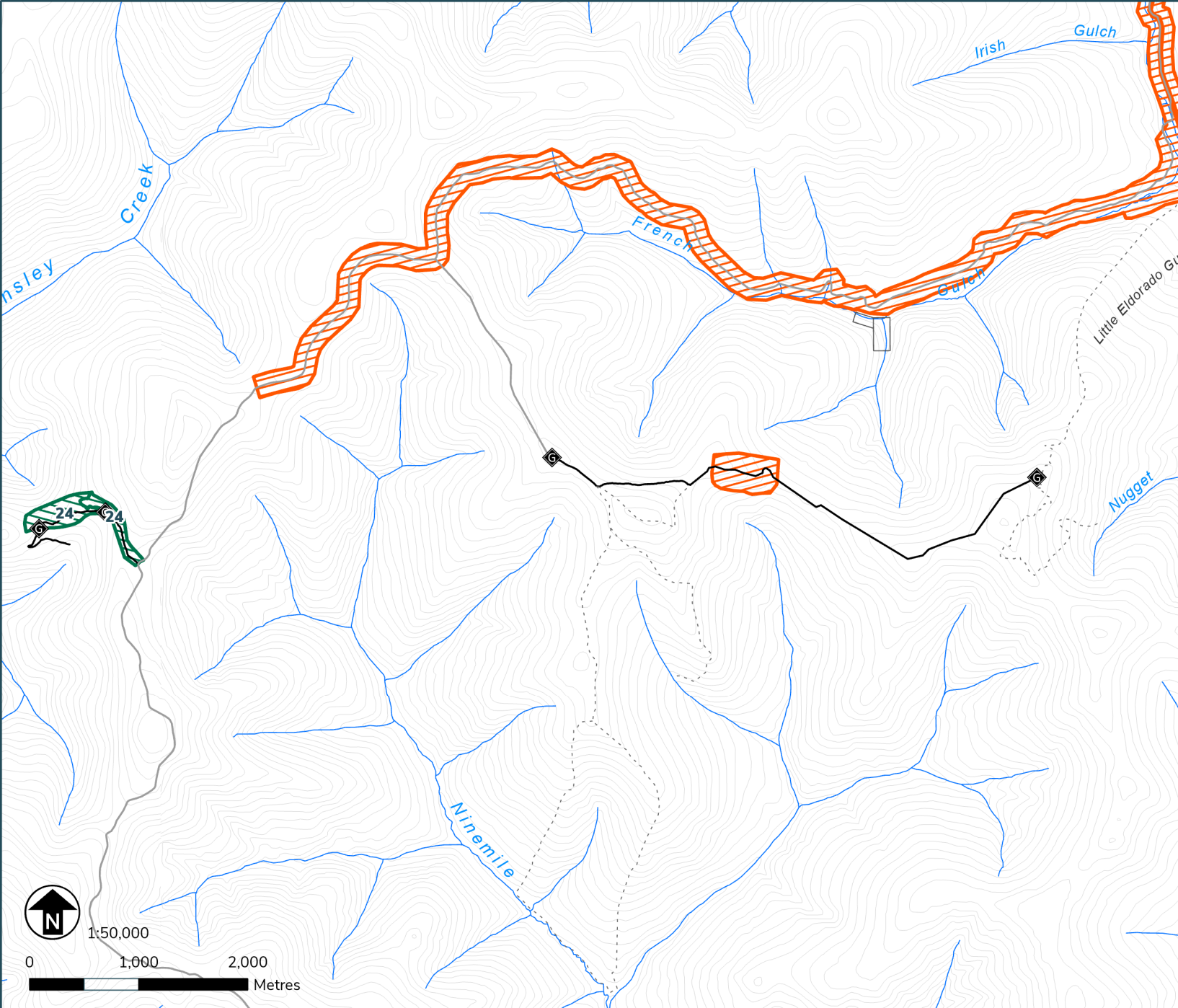
Map produced on: April 02, 2024
Map expires on: March 31, 2025

Personal Use Fuelwood Areas
 Designated Areas with additional terms and conditions
 Designated Areas

Features of Interest
 Gate Locations
 Designated Access Points

Land Tenure
 Municipal Boundaries
 Land Dispositions
 Surveyed Land Parcels
 Land Notations
 Parks and Protected Areas

First Nation Settlement Lands
 Surveyed First Nation Settlement Lands
 Unsurveyed FN Interim Protected Lands
 Unsurveyed FN Settlement Lands



Terms & Conditions Reference:

24. Temporary seasonal restriction. Closed between October 15 to October 31. Reopens November 1.

This map is not your permit. Permits can be acquired at Compliance, Monitoring and Inspections offices or online. Terms and conditions apply to all permits.

- To view up-to-date maps or apply online, please visit: yukon.ca
- For support email: forestry@yukon.ca

Data Sources: Yukon Government, Geomatics Yukon, and Forest Management Branch

