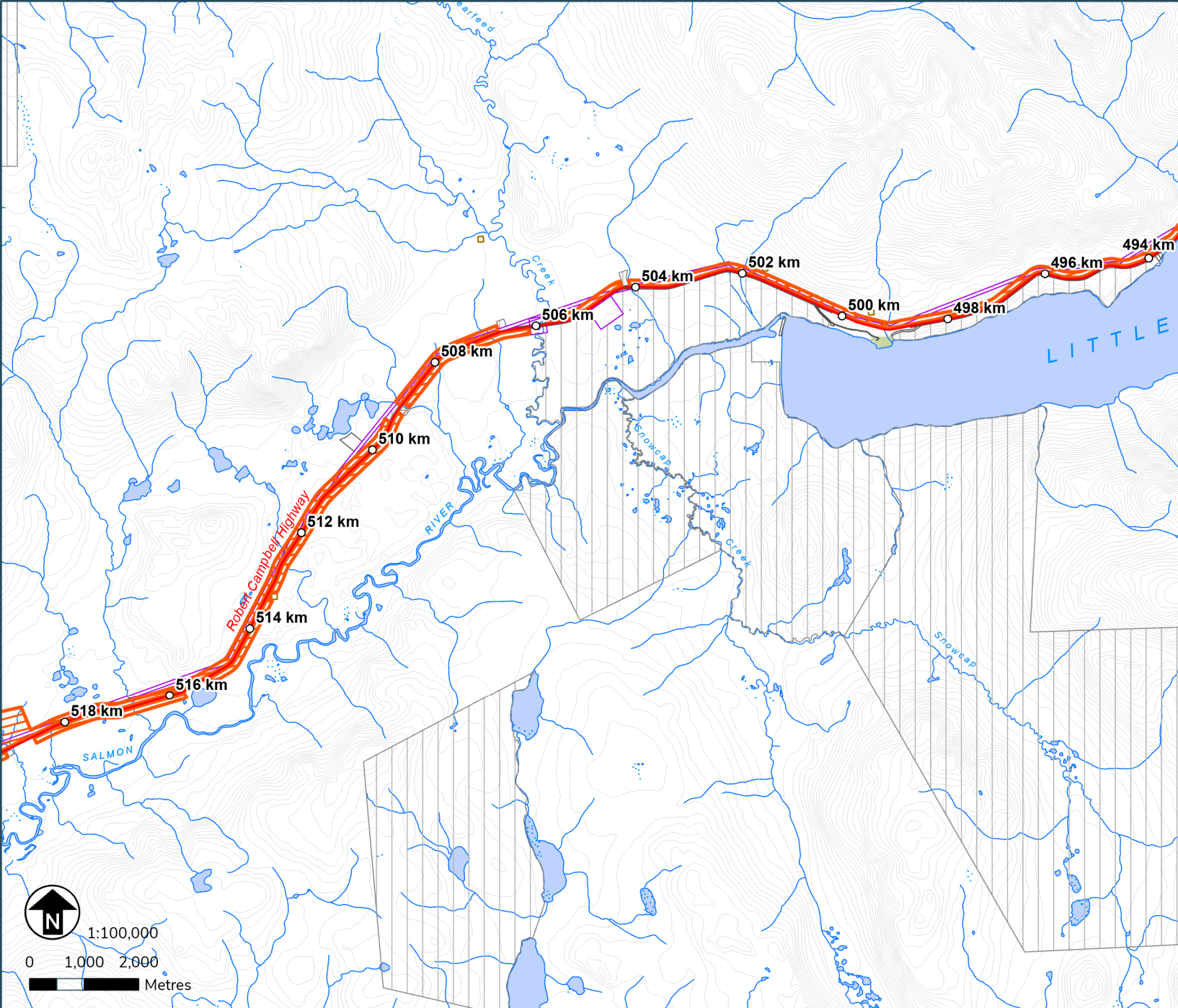


# Personal Use Fuelwood Cutting Areas

Map: Faro 1

Location: Little Salmon Lake / Robert Campbell Hwy

Map produced on: April 02, 2024  
Map expires on: March 31, 2025



- Personal Use Fuelwood Areas**
- Designated Areas with additional terms and conditions
  - Designated Areas
- Features of Interest**
- Gate Locations
  - Designated Access Points
- Land Tenure**
- Municipal Boundaries
  - Land Dispositions
  - Surveyed Land Parcels
  - Land Notations
  - Parks and Protected Areas
- First Nation Settlement Lands**
- Surveyed First Nation Settlement Lands
  - Unsurveyed FN Interim Protected Lands
  - Unsurveyed FN Settlement Lands



Terms & Conditions Reference:

N/A

This map is not your permit. Permits can be acquired at Compliance, Monitoring and Inspections offices or online. Terms and conditions apply to all permits.

- To view up-to-date maps or apply online, please visit: [yukon.ca](http://yukon.ca)
- For support email: [forestry@yukon.ca](mailto:forestry@yukon.ca)

Data Sources: Yukon Government, Geomatics Yukon, and Forest Management Branch




# Personal Use Fuelwood Cutting Areas

Map: Faro 2

Location: Little Salmon Lake /  
Robert Campbell Hwy

Map produced on: April 02, 2024  
Map expires on: March 31, 2025

## Personal Use Fuelwood Areas

 Designated Areas with additional terms and conditions

 Designated Areas

## Features of Interest


 Gate Locations

 Designated Access Points

## Land Tenure

 Municipal Boundaries

 Land Dispositions

 Surveyed Land Parcels

 Land Notations

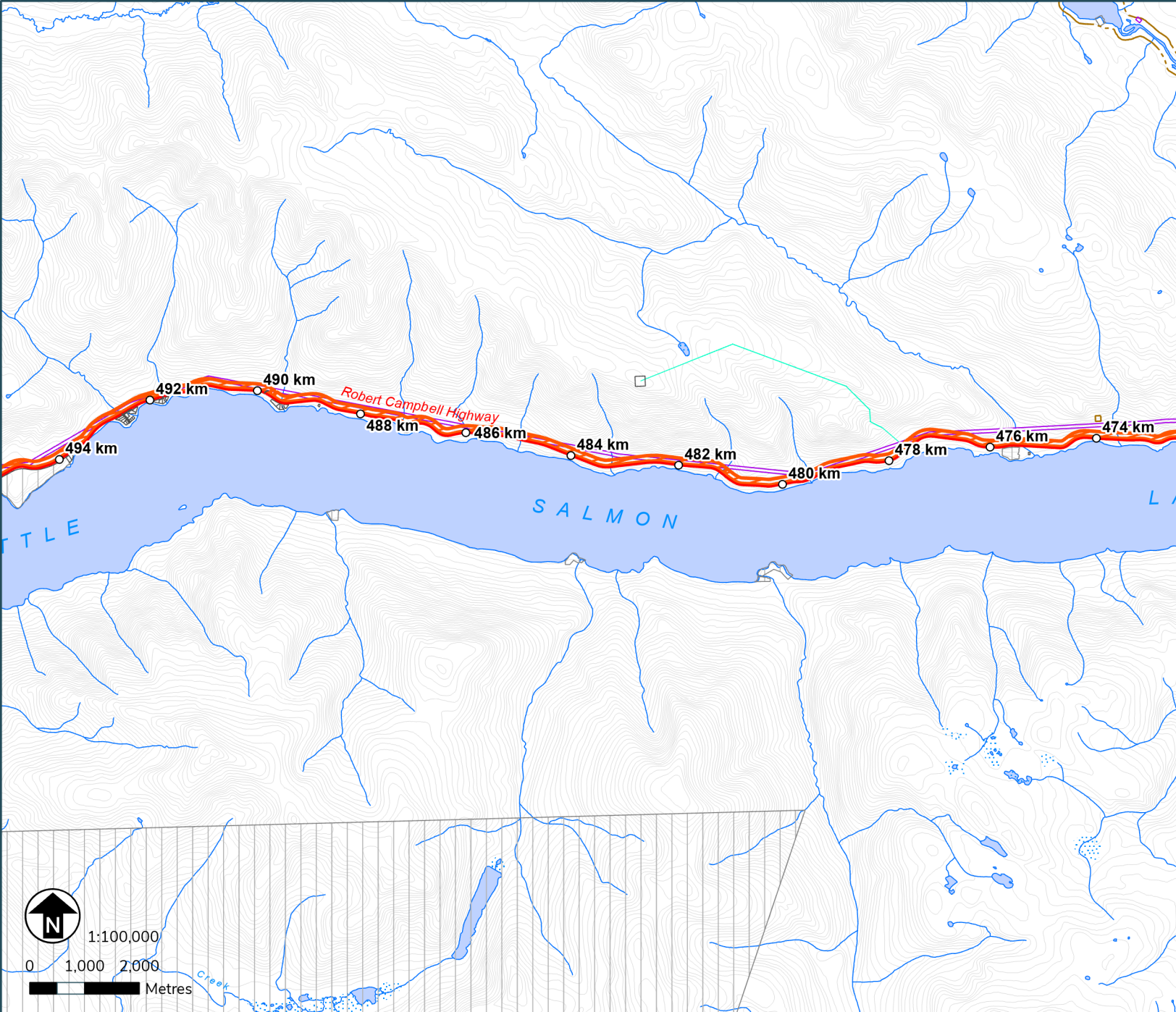
 Parks and Protected Areas

## First Nation Settlement Lands

 Surveyed First Nation Settlement Lands

 Unsurveyed FN Interim Protected Lands

 Unsurveyed FN Settlement Lands



Terms & Conditions Reference:

N/A

This map is not your permit. Permits can be acquired at Compliance, Monitoring and Inspections offices or online. Terms and conditions apply to all permits.  
- To view up-to-date maps or apply online, please visit: [yukon.ca](http://yukon.ca)  
- For support email: [forestry@yukon.ca](mailto:forestry@yukon.ca)  
Data Sources: Yukon Government, Geomatics Yukon, and Forest Management Branch






# Personal Use Fuelwood Cutting Areas

Map: Faro 3

Location: Little Salmon Lake / Robert Campbell Hwy

Map produced on: April 02, 2024  
Map expires on: March 31, 2025

## Personal Use Fuelwood Areas

 Designated Areas with additional terms and conditions

 Designated Areas

## Features of Interest

 Gate Locations

 Designated Access Points

## Land Tenure

 Municipal Boundaries

 Land Dispositions

 Surveyed Land Parcels

 Land Notations

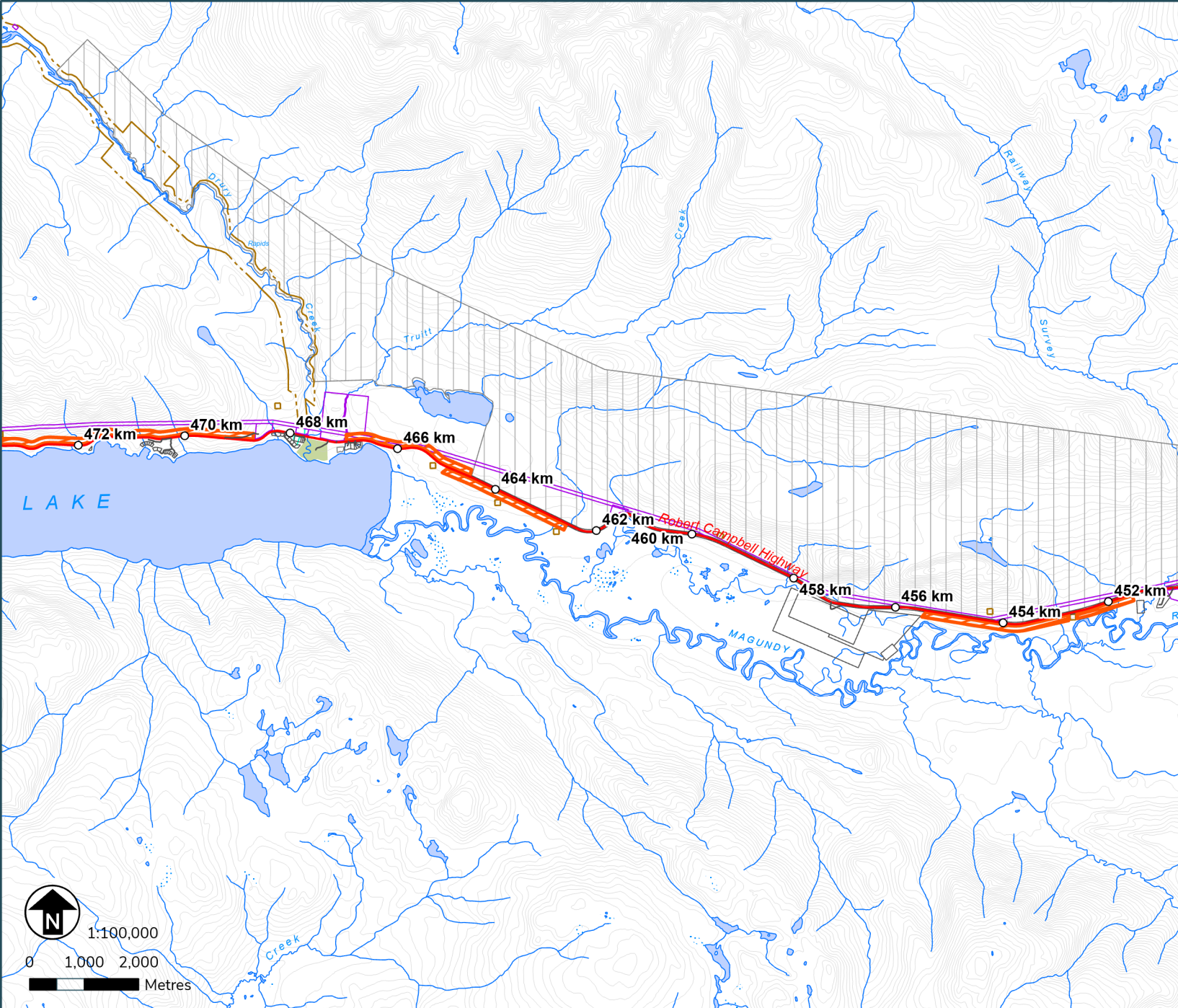
 Parks and Protected Areas

## First Nation Settlement Lands

 Surveyed First Nation Settlement Lands

 Unsurveyed FN Interim Protected Lands

 Unsurveyed FN Settlement Lands



## Terms & Conditions Reference:

N/A

This map is not your permit. Permits can be acquired at Compliance, Monitoring and Inspections offices or online.

Terms and conditions apply to all permits.

- To view up-to-date maps or apply online,

please visit: [yukon.ca](http://yukon.ca)

- For support email: [forestry@yukon.ca](mailto:forestry@yukon.ca)

Data Sources: Yukon Government, Geomatics Yukon,

and Forest Management Branch




# Personal Use Fuelwood Cutting Areas

Map: Faro 4

Location: West of Faro / Robert Campbell Hwy

Map produced on: April 02, 2024  
Map expires on: March 31, 2025

## Personal Use Fuelwood Areas

 Designated Areas with additional terms and conditions

 Designated Areas

## Features of Interest


 Gate Locations

 Designated Access Points

## Land Tenure

 Municipal Boundaries

 Land Dispositions

 Surveyed Land Parcels

 Land Notations

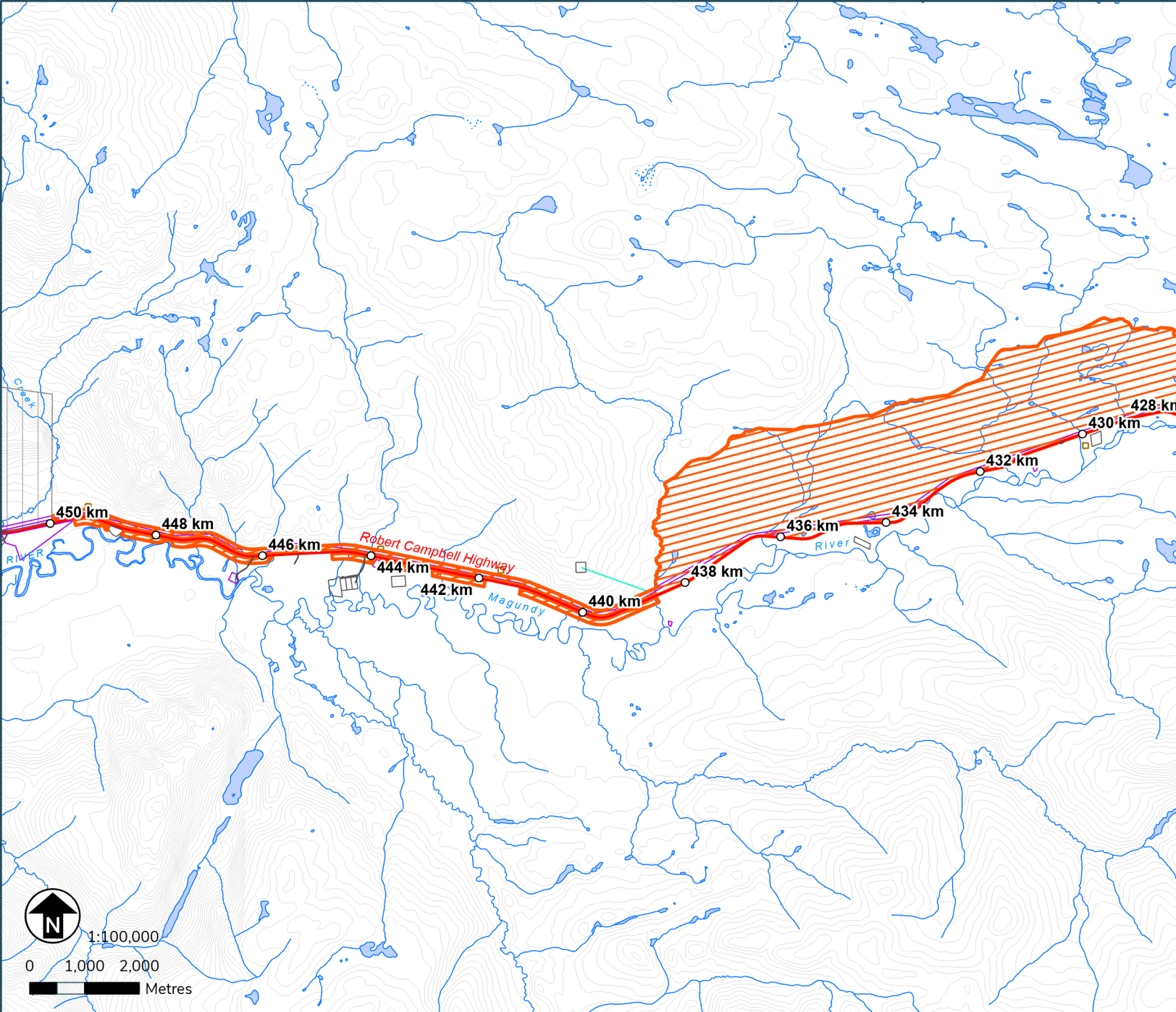
 Parks and Protected Areas

## First Nation Settlement Lands

 Surveyed First Nation Settlement Lands

 Unsurveyed FN Interim Protected Lands

 Unsurveyed FN Settlement Lands



## Terms & Conditions Reference:

N/A

This map is not your permit. Permits can be acquired at Compliance, Monitoring and Inspections offices or online. Terms and conditions apply to all permits.  
- To view up-to-date maps or apply online, please visit: [yukon.ca](http://yukon.ca)  
- For support email: [forestry@yukon.ca](mailto:forestry@yukon.ca)  
Data Sources: Yukon Government, Geomatics Yukon, and Forest Management Branch





# Personal Use Fuelwood Cutting Areas


Map: Faro 5

Location: Faro / Mitchell Road

Map produced on: April 02, 2024

Map expires on: March 31, 2025

## Personal Use Fuelwood Areas

 Designated Areas with additional terms and conditions

 Designated Areas

## Features of Interest

 Gate Locations

 Designated Access Points

## Land Tenure

 Municipal Boundaries

 Land Dispositions

 Surveyed Land Parcels

 Land Notations

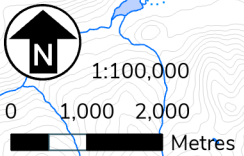
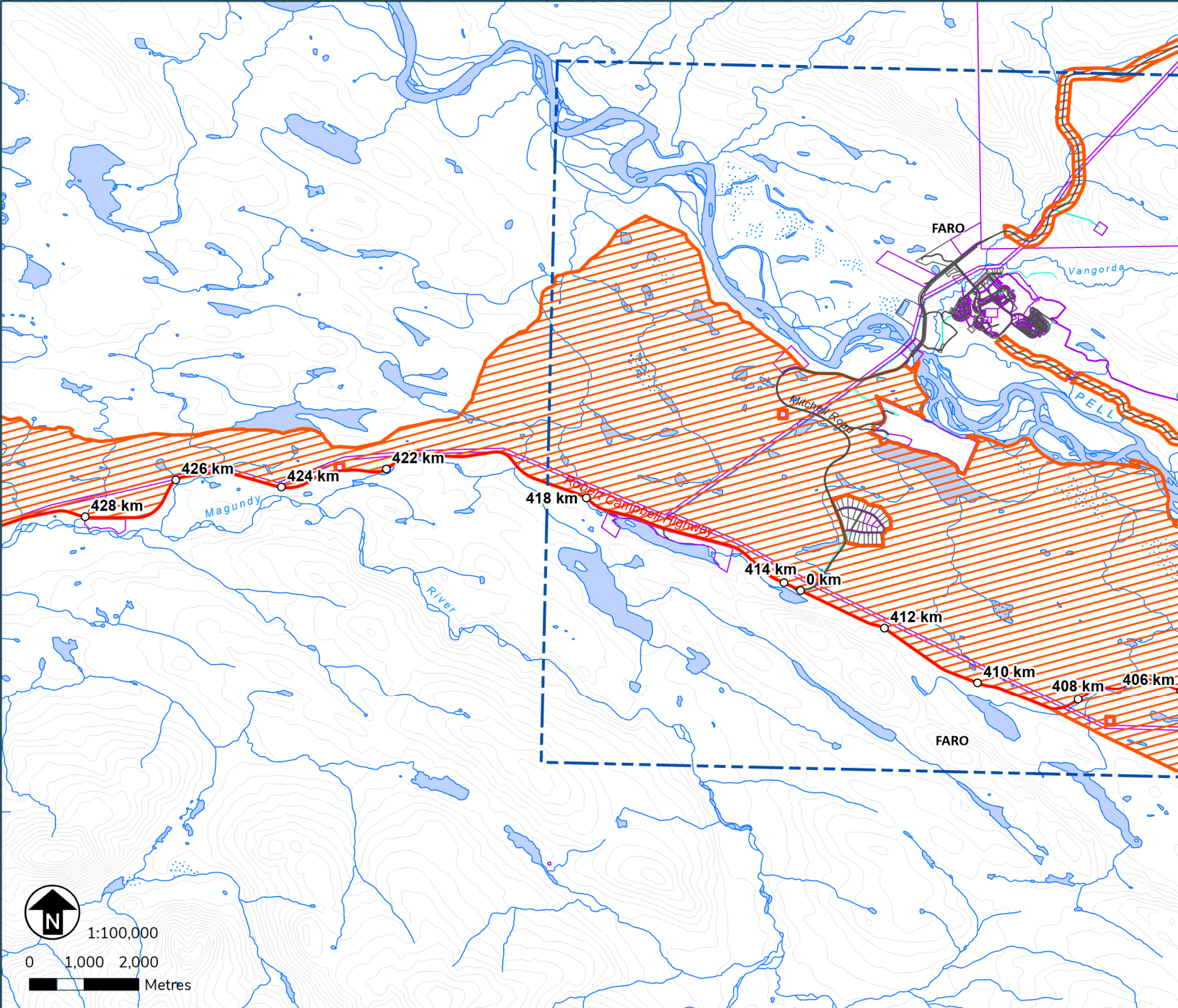
 Parks and Protected Areas

## First Nation Settlement Lands

 Surveyed First Nation Settlement Lands

 Unsurveyed FN Interim Protected Lands

 Unsurveyed FN Settlement Lands



Terms & Conditions Reference:

N/A

This map is not your permit. Permits can be acquired at Compliance, Monitoring and Inspections offices or online. Terms and conditions apply to all permits.  
 - To view up-to-date maps or apply online, please visit: [yukon.ca](http://yukon.ca)  
 - For support email: [forestry@yukon.ca](mailto:forestry@yukon.ca)  
 Data Sources: Yukon Government, Geomatics Yukon, and Forest Management Branch



# Personal Use Fuelwood Cutting Areas


Map: Faro 6

Location: Faro Mine Road / Faro

Map produced on: April 02, 2024

Map expires on: March 31, 2025

## Personal Use Fuelwood Areas

 Designated Areas with additional terms and conditions

 Designated Areas

## Features of Interest

 Gate Locations

 Designated Access Points

## Land Tenure

 Municipal Boundaries

 Land Dispositions

 Surveyed Land Parcels

 Land Notations

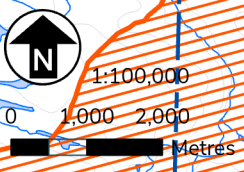
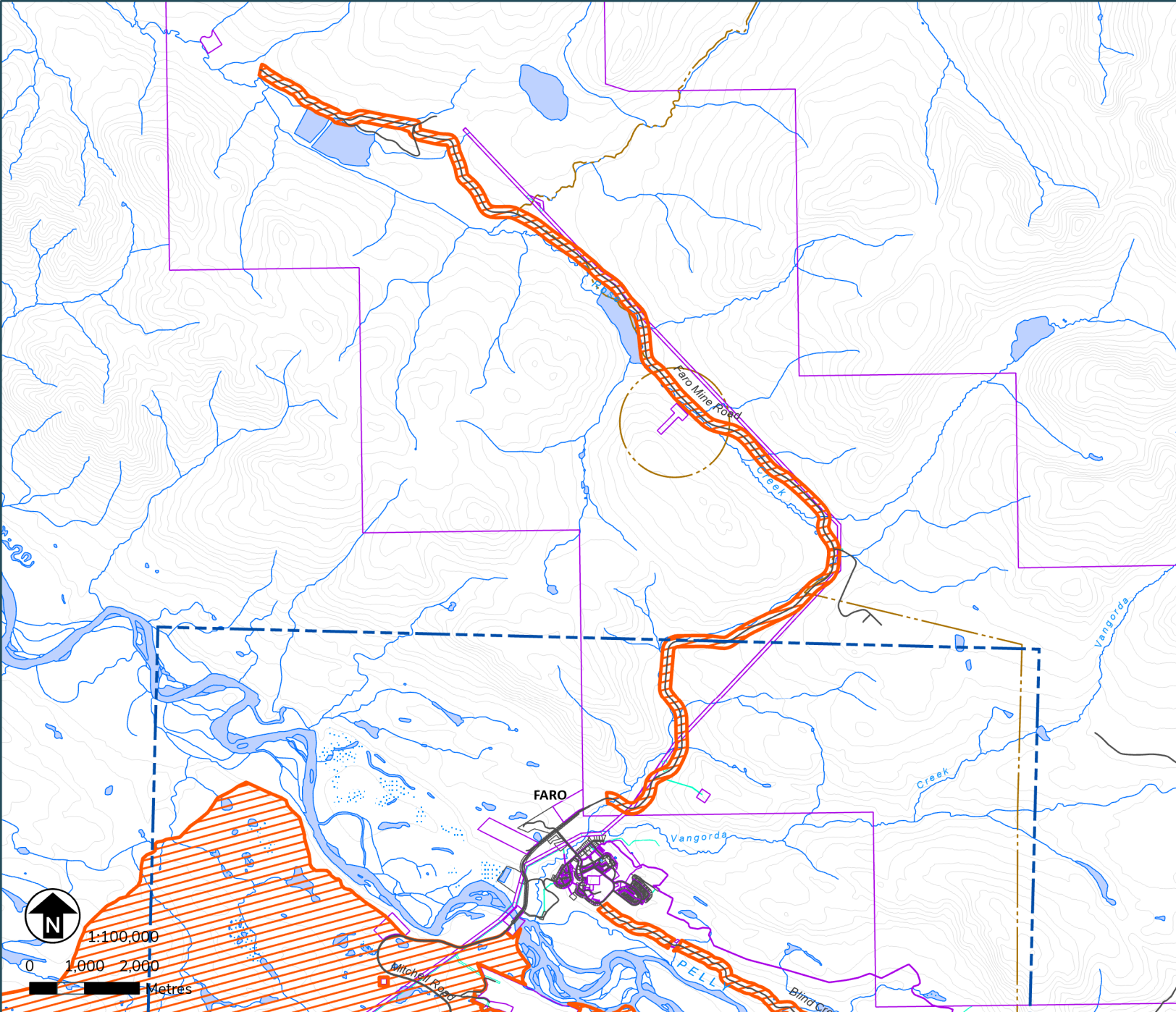
 Parks and Protected Areas

## First Nation Settlement Lands

 Surveyed First Nation Settlement Lands

 Unsurveyed FN Interim Protected Lands

 Unsurveyed FN Settlement Lands



Terms & Conditions Reference:

N/A

This map is not your permit. Permits can be acquired at Compliance, Monitoring and Inspections offices or online. Terms and conditions apply to all permits.  
- To view up-to-date maps or apply online, please visit: [yukon.ca](http://yukon.ca)  
- For support email: [forestry@yukon.ca](mailto:forestry@yukon.ca)  
Data Sources: Yukon Government, Geomatics Yukon, and Forest Management Branch






# Personal Use Fuelwood Cutting Areas

Map: Faro 7

Location: Swim Lakes Road / Faro / Robert Campbell

Map produced on: April 02, 2024  
Map expires on: March 31, 2025

## Personal Use Fuelwood Areas

 Designated Areas with additional terms and conditions

 Designated Areas

## Features of Interest

 Gate Locations

 Designated Access Points

## Land Tenure

 Municipal Boundaries

 Land Dispositions

 Surveyed Land Parcels

 Land Notations

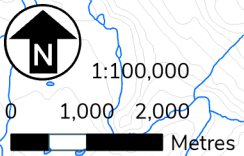
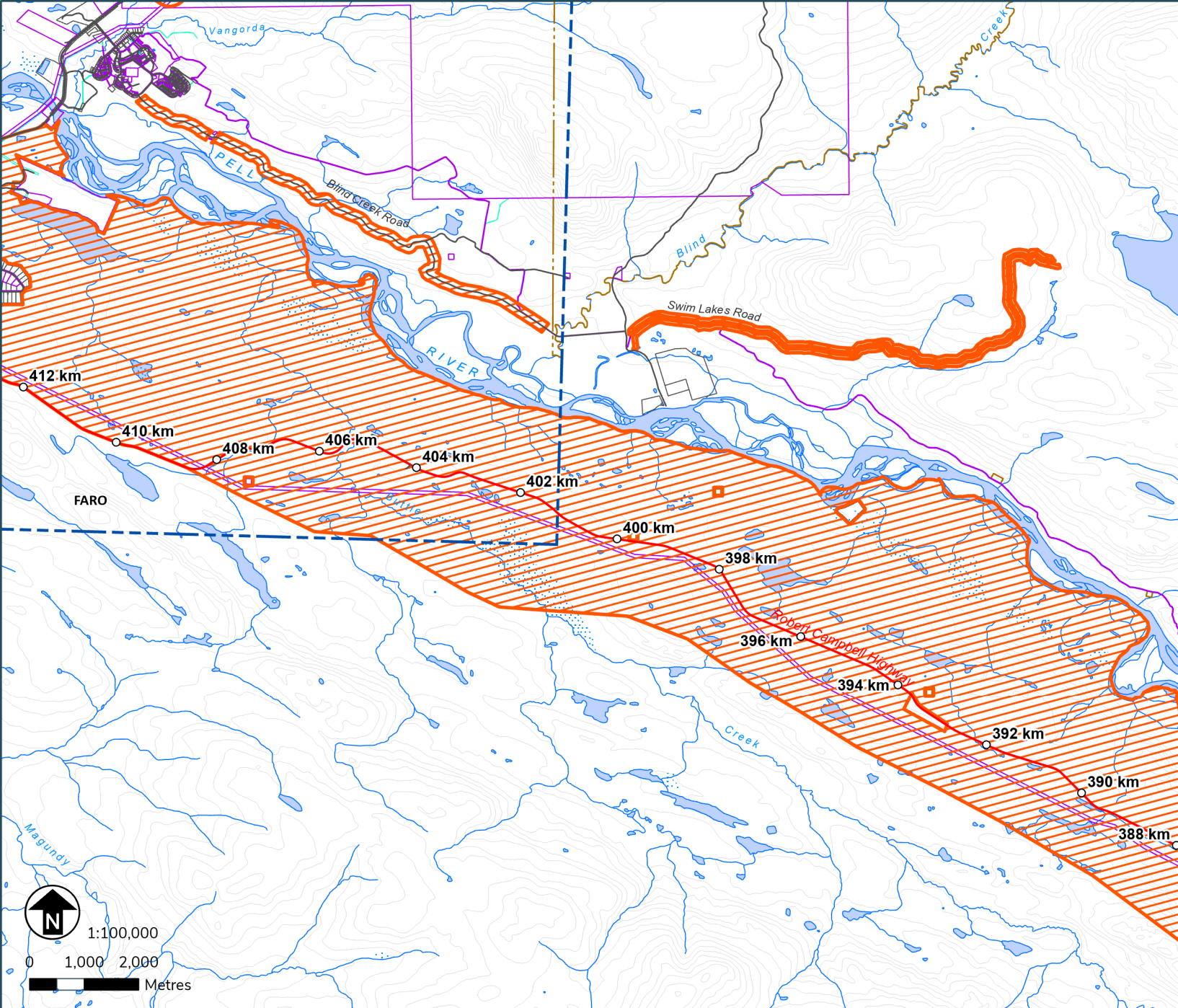
 Parks and Protected Areas

## First Nation Settlement Lands

 Surveyed First Nation Settlement Lands

 Unsurveyed FN Interim Protected Lands

 Unsurveyed FN Settlement Lands



Terms & Conditions Reference:

N/A

This map is not your permit. Permits can be acquired at Compliance, Monitoring and Inspections offices or online. Terms and conditions apply to all permits.  
- To view up-to-date maps or apply online, please visit: [yukon.ca](http://yukon.ca)  
- For support email: [forestry@yukon.ca](mailto:forestry@yukon.ca)  
Data Sources: Yukon Government, Geomatics Yukon, and Forest Management Branch





# Personal Use Fuelwood Cutting Areas


Map: Faro 8

Location: West of Ross River

Map produced on: April 02, 2024

Map expires on: March 31, 2025

## Personal Use Fuelwood Areas

 Designated Areas with additional terms and conditions

 Designated Areas

## Features of Interest

 Gate Locations

 Designated Access Points

## Land Tenure

 Municipal Boundaries

 Land Dispositions

 Surveyed Land Parcels

 Land Notations

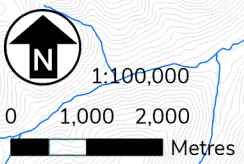
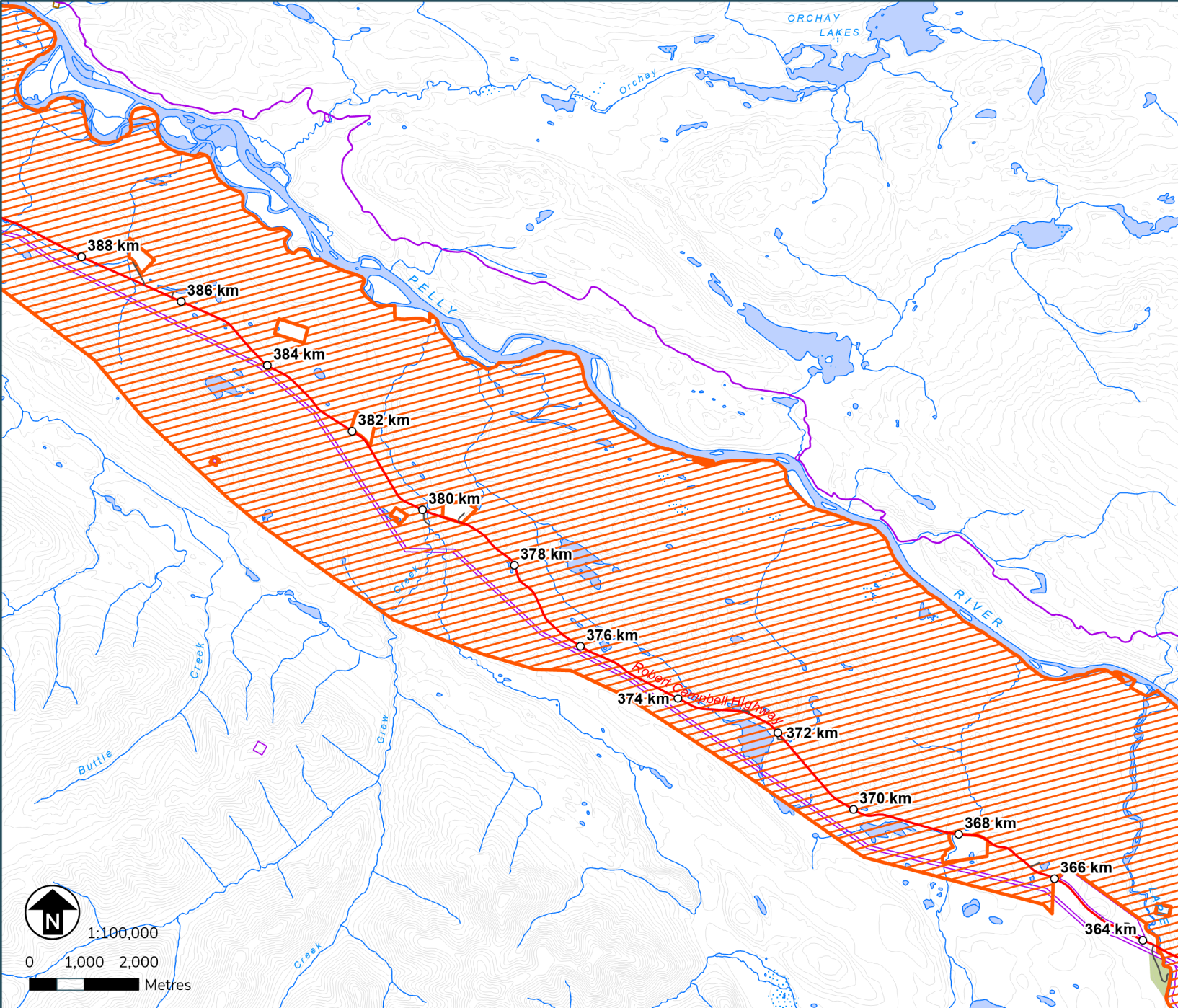
 Parks and Protected Areas

## First Nation Settlement Lands

 Surveyed First Nation Settlement Lands

 Unsurveyed FN Interim Protected Lands

 Unsurveyed FN Settlement Lands



Terms & Conditions Reference:

N/A

This map is not your permit. Permits can be acquired at Compliance, Monitoring and Inspections offices or online. Terms and conditions apply to all permits.  
- To view up-to-date maps or apply online, please visit: [yukon.ca](http://yukon.ca)  
- For support email: [forestry@yukon.ca](mailto:forestry@yukon.ca)  
Data Sources: Yukon Government, Geomatics Yukon, and Forest Management Branch

