

Personal Use Fuelwood Cutting Areas


Map: Ross River 1

Location: South Canol Road

Map produced on: April 02, 2024

Map expires on: March 31, 2025

Personal Use Fuelwood Areas

 Designated Areas with additional terms and conditions

 Designated Areas

Features of Interest

 Gate Locations

 Designated Access Points

Land Tenure

 Municipal Boundaries

 Land Dispositions

 Surveyed Land Parcels

 Land Notations

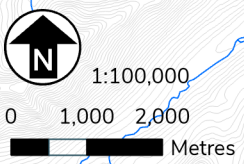
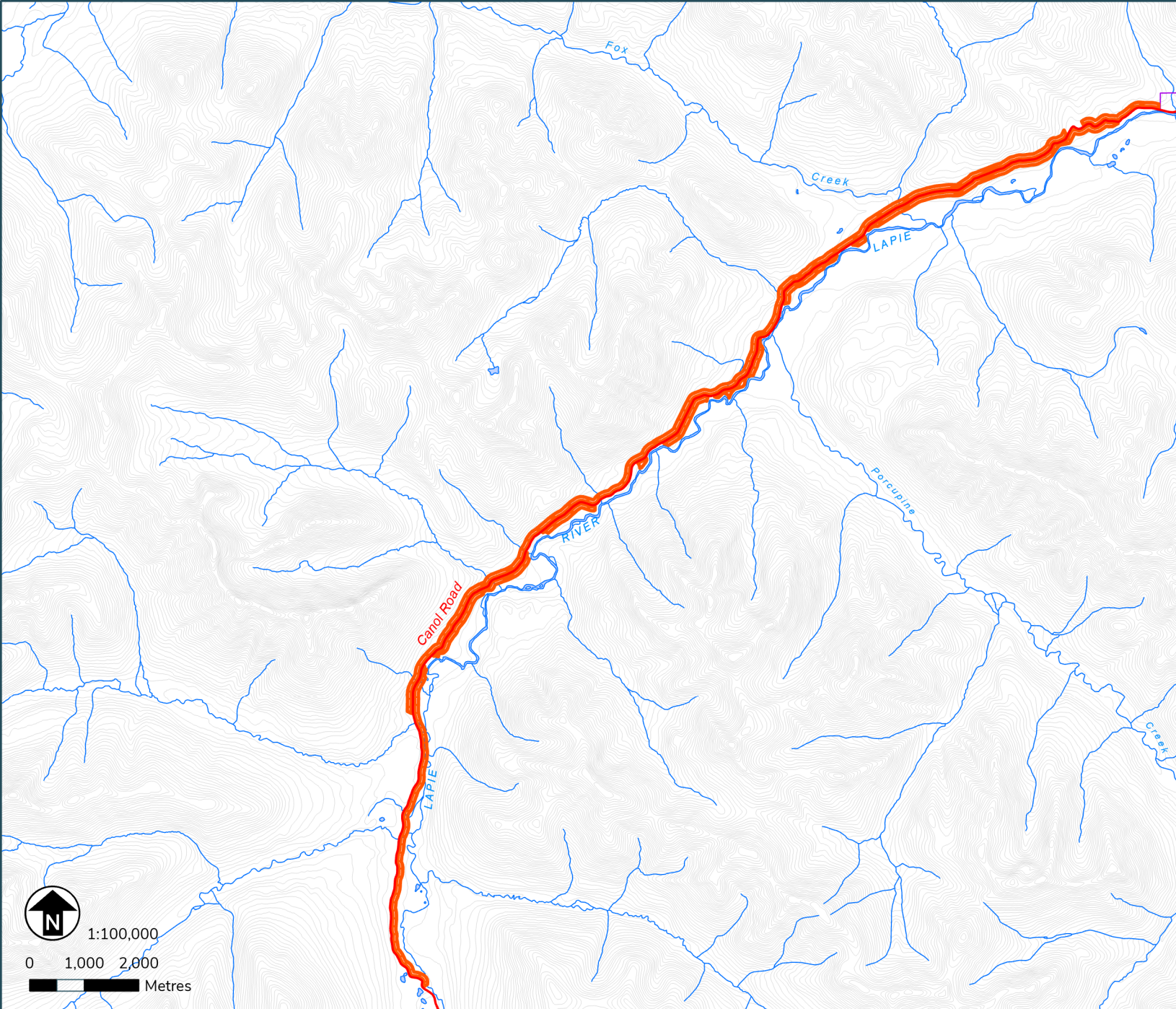
 Parks and Protected Areas

First Nation Settlement Lands

 Surveyed First Nation Settlement Lands

 Unsurveyed FN Interim Protected Lands

 Unsurveyed FN Settlement Lands



Terms & Conditions Reference:

N/A

This map is not your permit. Permits can be acquired at Compliance, Monitoring and Inspections offices or online. Terms and conditions apply to all permits.
- To view up-to-date maps or apply online, please visit: yukon.ca
- For support email: forestry@yukon.ca
Data Sources: Yukon Government, Geomatics Yukon, and Forest Management Branch




Personal Use Fuelwood Cutting Areas

Map: Ross River 2

Location: Robert Campbell Hwy / South Canal

Map produced on: April 02, 2024
Map expires on: March 31, 2025

Personal Use Fuelwood Areas

 Designated Areas with additional terms and conditions

 Designated Areas

Features of Interest

 Gate Locations

 Designated Access Points

Land Tenure

 Municipal Boundaries

 Land Dispositions

 Surveyed Land Parcels

 Land Notations

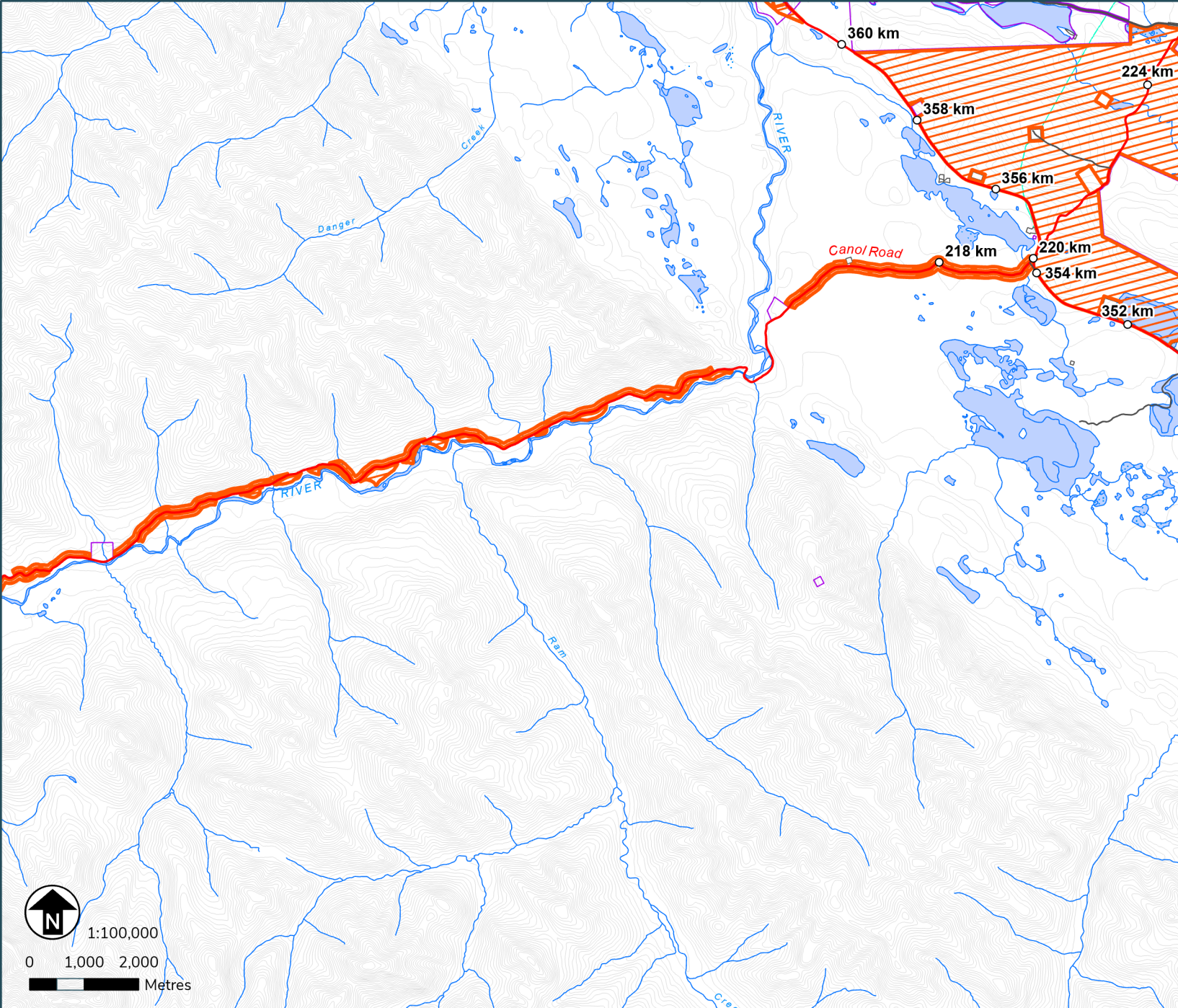
 Parks and Protected Areas

First Nation Settlement Lands

 Surveyed First Nation Settlement Lands

 Unsurveyed FN Interim Protected Lands

 Unsurveyed FN Settlement Lands



Terms & Conditions Reference:

N/A

This map is not your permit. Permits can be acquired at Compliance, Monitoring and Inspections offices or online. Terms and conditions apply to all permits.
- To view up-to-date maps or apply online, please visit: yukon.ca
- For support email: forestry@yukon.ca
Data Sources: Yukon Government, Geomatics Yukon, and Forest Management Branch




Personal Use Fuelwood Cutting Areas

Map: Ross River 3
Location: Ross River

Map produced on: April 02, 2024
Map expires on: March 31, 2025

Personal Use Fuelwood Areas

 Designated Areas with additional terms and conditions

 Designated Areas

Features of Interest

 Gate Locations

 Designated Access Points

Land Tenure

 Municipal Boundaries

 Land Dispositions

 Surveyed Land Parcels

 Land Notations

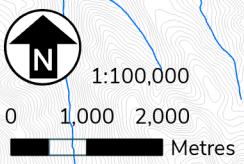
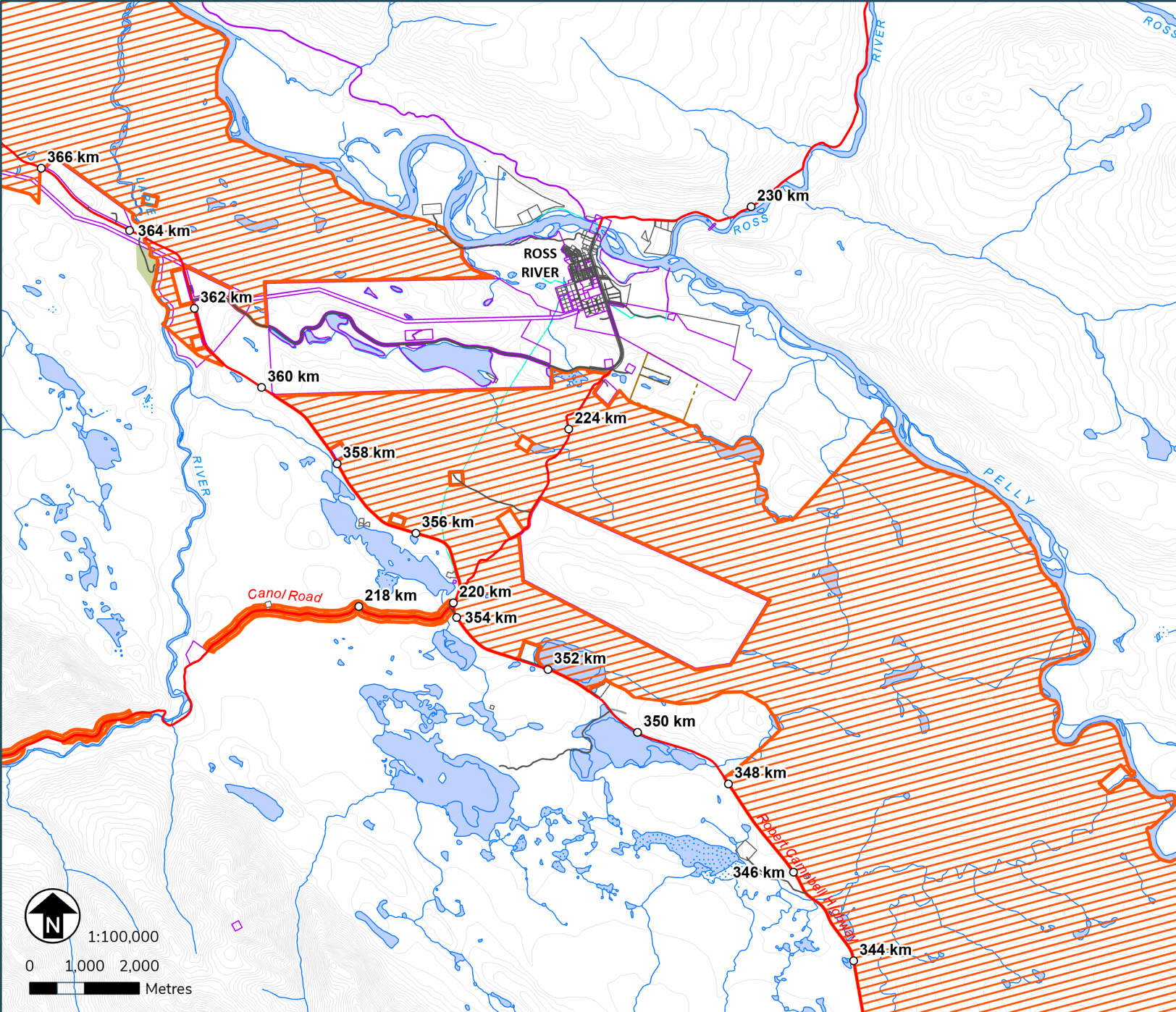
 Parks and Protected Areas

First Nation Settlement Lands

 Surveyed First Nation Settlement Lands

 Unsurveyed FN Interim Protected Lands

 Unsurveyed FN Settlement Lands



Terms & Conditions Reference:

N/A

This map is not your permit. Permits can be acquired at Compliance, Monitoring and Inspections offices or online. Terms and conditions apply to all permits.
- To view up-to-date maps or apply online, please visit: yukon.ca
- For support email: forestry@yukon.ca
Data Sources: Yukon Government, Geomatics Yukon, and Forest Management Branch




Personal Use Fuelwood Cutting Areas

Map: Ross River 4

Location: East of Ross River /
Ketza Road

Map produced on: April 02, 2024
Map expires on: March 31, 2025

Personal Use Fuelwood Areas

 Designated Areas with additional terms and conditions

 Designated Areas

Features of Interest


 Gate Locations

 Designated Access Points

Land Tenure

 Municipal Boundaries

 Land Dispositions

 Surveyed Land Parcels

 Land Notations

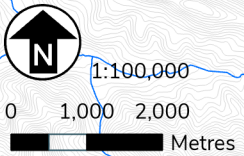
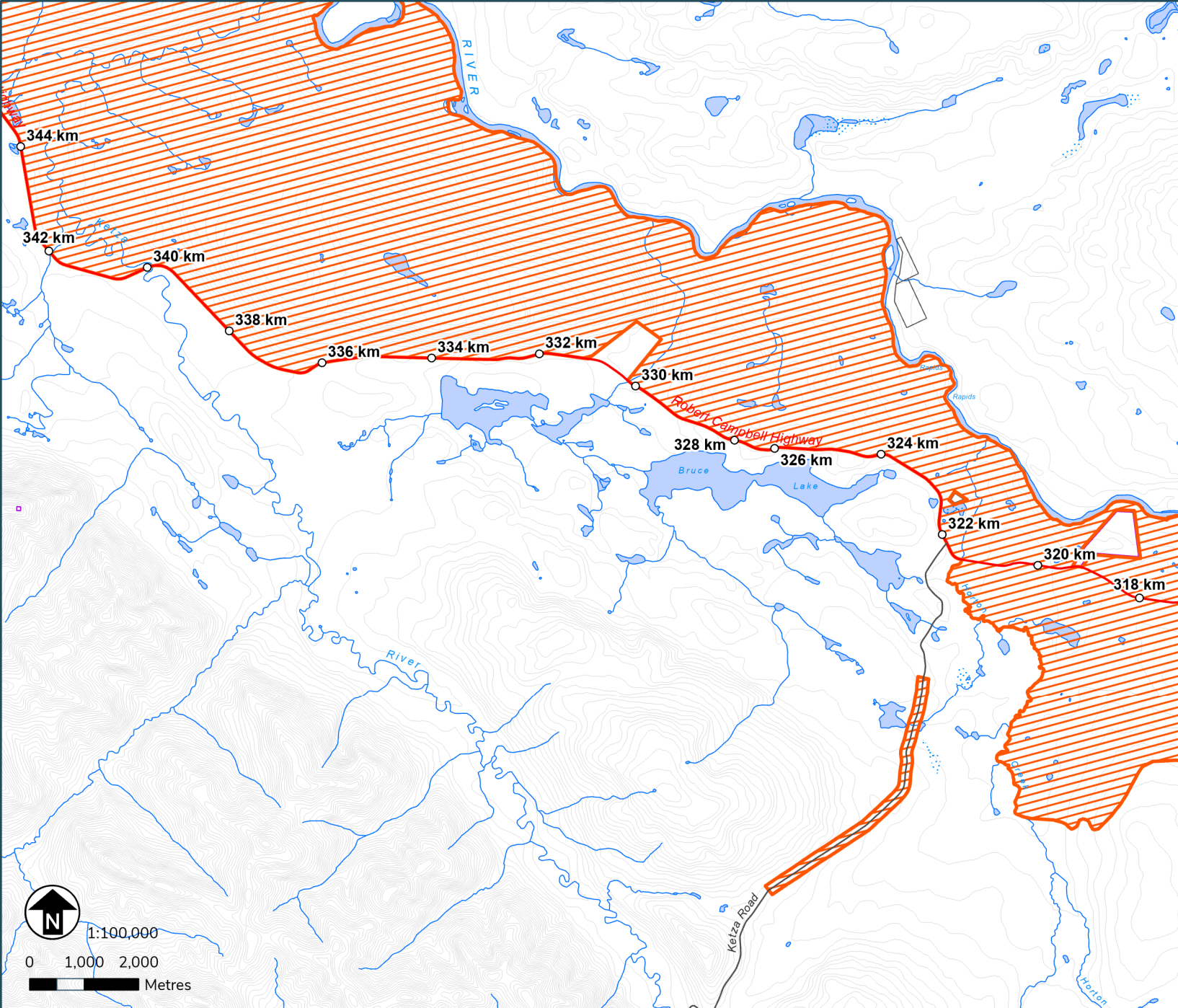
 Parks and Protected Areas

First Nation Settlement Lands

 Surveyed First Nation Settlement Lands

 Unsurveyed FN Interim Protected Lands

 Unsurveyed FN Settlement Lands



Terms & Conditions Reference:

N/A

This map is not your permit. Permits can be acquired at Compliance, Monitoring and Inspections offices or online. Terms and conditions apply to all permits.
 - To view up-to-date maps or apply online, please visit: yukon.ca
 - For support email: forestry@yukon.ca
 Data Sources: Yukon Government, Geomatics Yukon, and Forest Management Branch




Personal Use Fuelwood Cutting Areas

Map: Ross River 5

Location: Robert Campbell /
Hoole River

Map produced on: April 02, 2024
Map expires on: March 31, 2025

Personal Use Fuelwood Areas

 Designated Areas with additional terms and conditions

 Designated Areas

Features of Interest

 Gate Locations

 Designated Access Points

Land Tenure

 Municipal Boundaries

 Land Dispositions

 Surveyed Land Parcels

 Land Notations

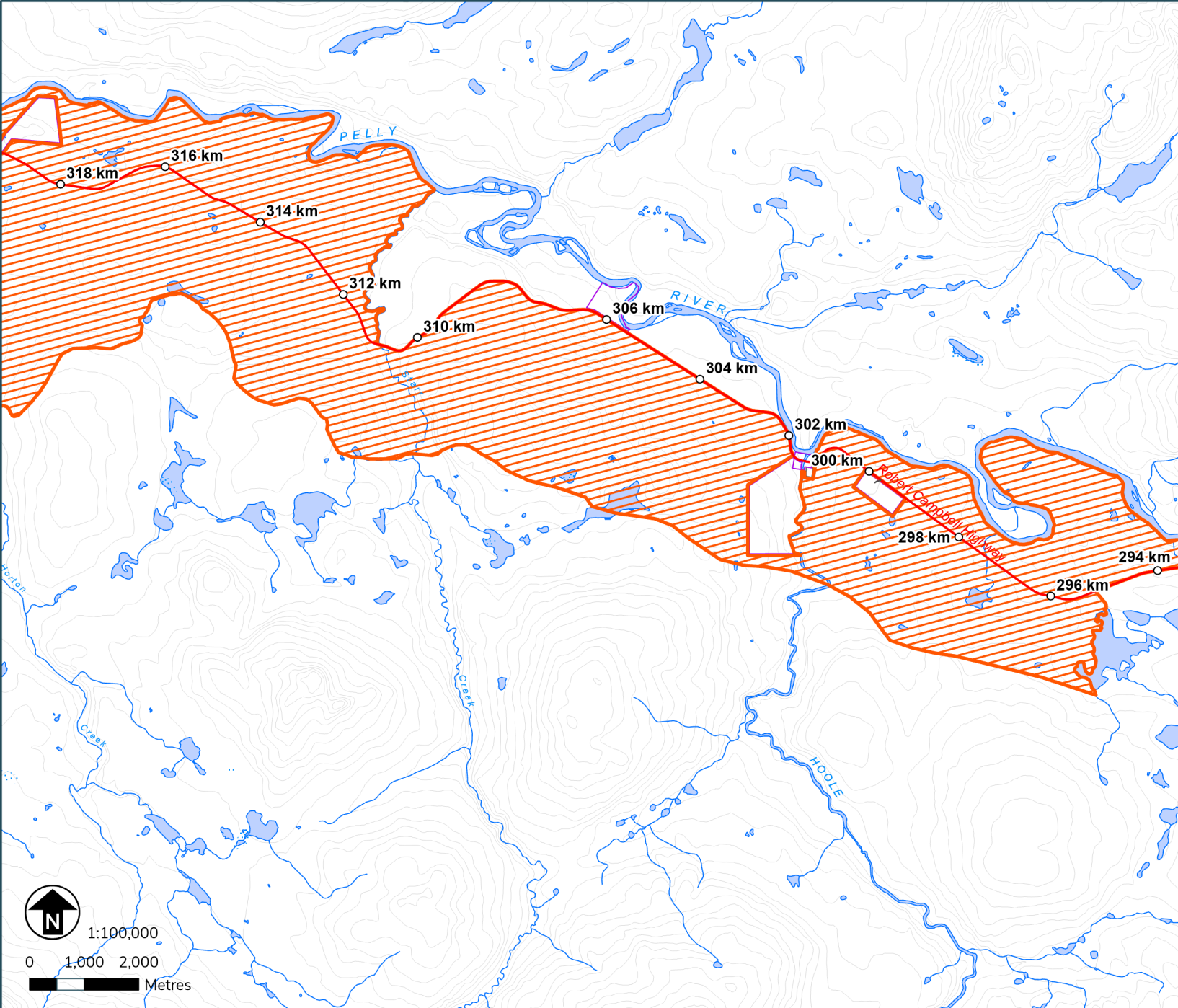
 Parks and Protected Areas

First Nation Settlement Lands

 Surveyed First Nation Settlement Lands

 Unsurveyed FN Interim Protected Lands

 Unsurveyed FN Settlement Lands



Terms & Conditions Reference:

N/A

This map is not your permit. Permits can be acquired at Compliance, Monitoring and Inspections offices or online. Terms and conditions apply to all permits.
- To view up-to-date maps or apply online, please visit: yukon.ca
- For support email: forestry@yukon.ca

Data Sources: Yukon Government, Geomatics Yukon, and Forest Management Branch




Personal Use Fuelwood Cutting Areas

Map: Ross River 6

Location: East of Ross River / Robert Campbell

Map produced on: April 02, 2024
Map expires on: March 31, 2025

Personal Use Fuelwood Areas

 Designated Areas with additional terms and conditions

 Designated Areas

Features of Interest

 Gate Locations

 Designated Access Points

Land Tenure

 Municipal Boundaries

 Land Dispositions

 Surveyed Land Parcels

 Land Notations

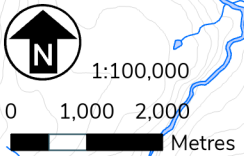
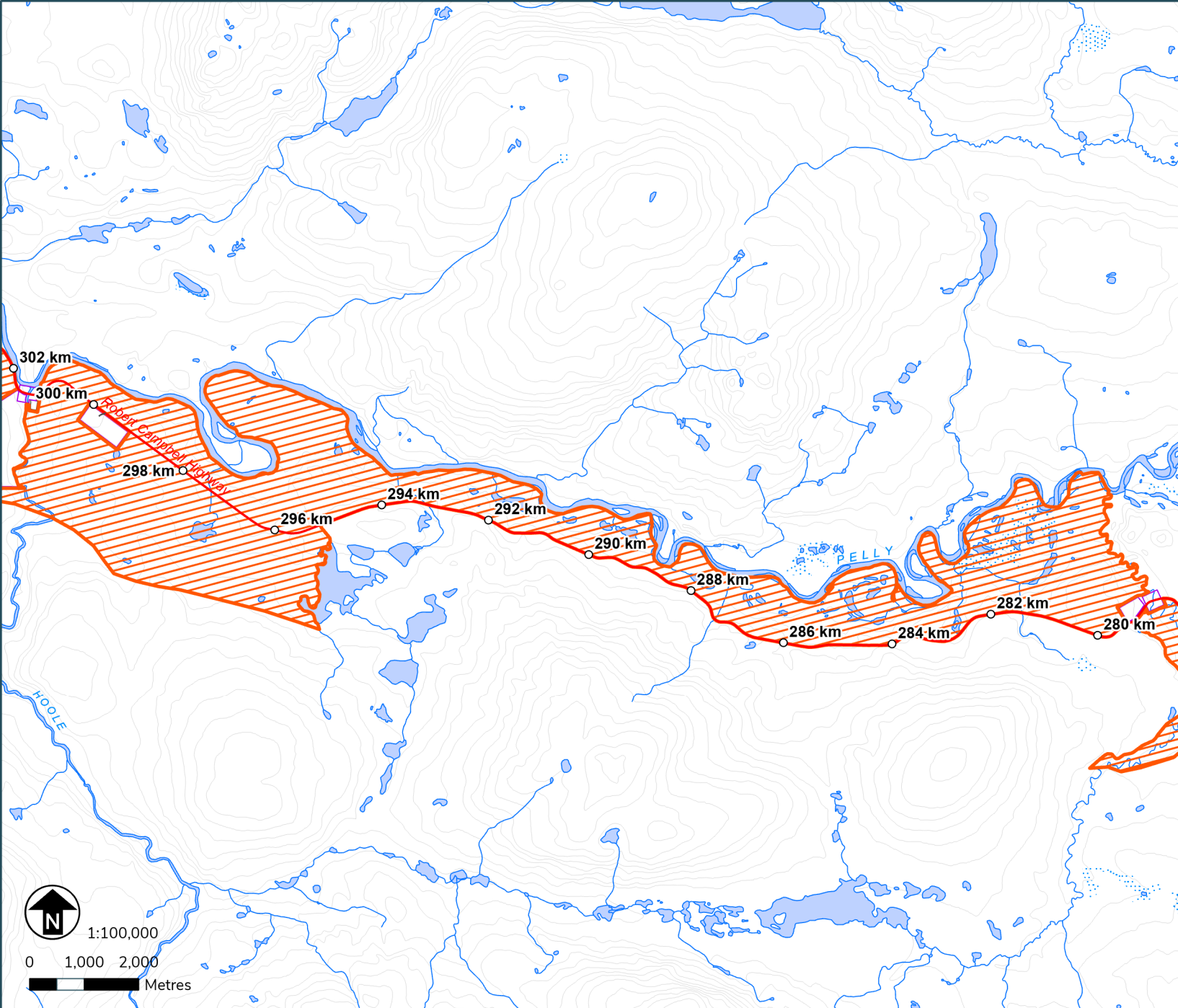
 Parks and Protected Areas

First Nation Settlement Lands

 Surveyed First Nation Settlement Lands

 Unsurveyed FN Interim Protected Lands

 Unsurveyed FN Settlement Lands



Terms & Conditions Reference:

N/A

This map is not your permit. Permits can be acquired at Compliance, Monitoring and Inspections offices or online. Terms and conditions apply to all permits.
- To view up-to-date maps or apply online, please visit: yukon.ca
- For support email: forestry@yukon.ca
Data Sources: Yukon Government, Geomatics Yukon, and Forest Management Branch

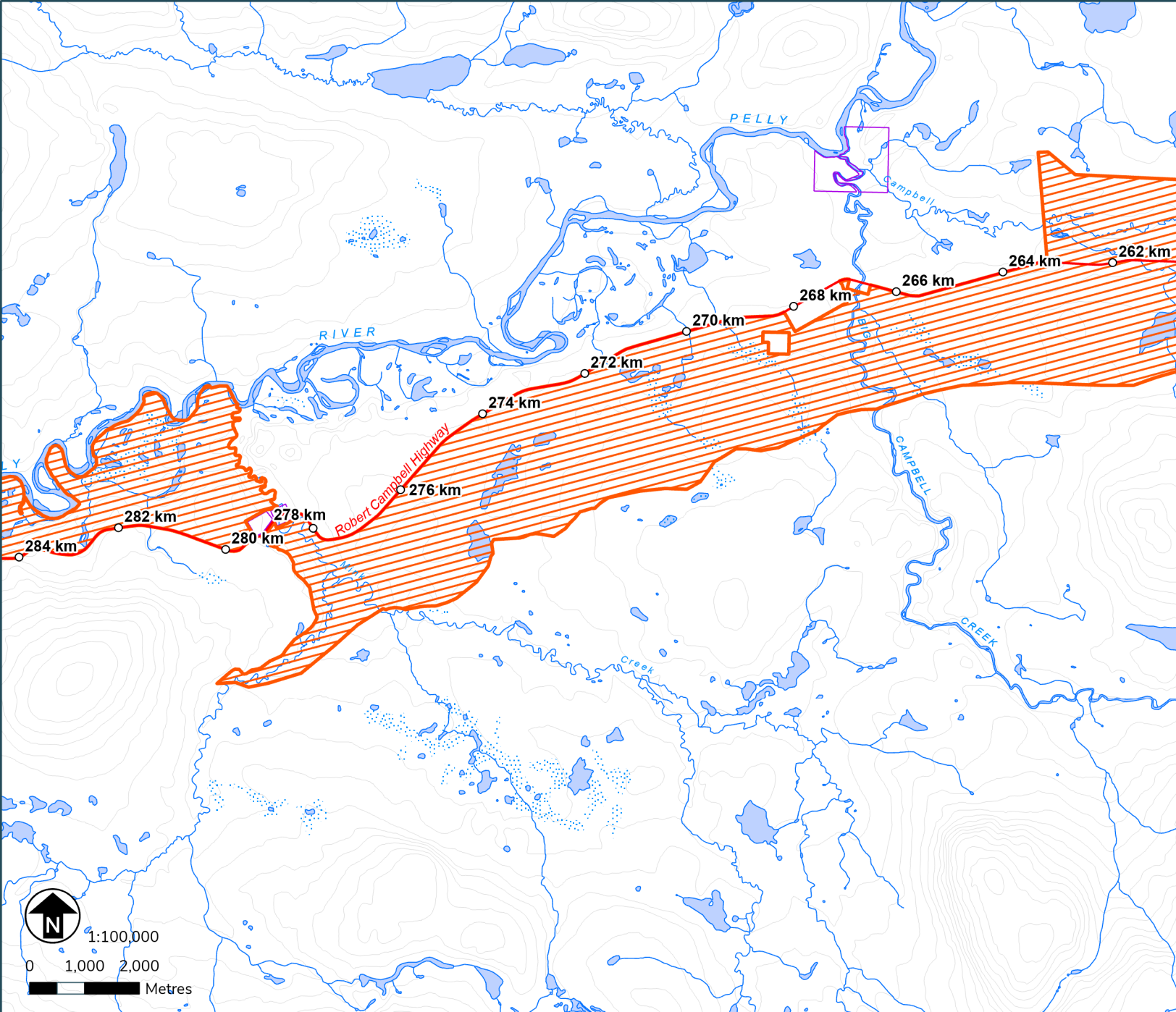


Personal Use Fuelwood Cutting Areas

Map: Ross River 7

Location: Robert Campbell / Big Campbell Creek

Map produced on: April 02, 2024
Map expires on: March 31, 2025



- Personal Use Fuelwood Areas**
- Designated Areas with additional terms and conditions
 - Designated Areas

- Features of Interest**
- Gate Locations
 - Designated Access Points

- Land Tenure**
- Municipal Boundaries
 - Land Dispositions
 - Surveyed Land Parcels
 - Land Notations
 - Parks and Protected Areas

- First Nation Settlement Lands**
- Surveyed First Nation Settlement Lands
 - Unsurveyed FN Interim Protected Lands
 - Unsurveyed FN Settlement Lands



This map is not your permit. Permits can be acquired at Compliance, Monitoring and Inspections offices or online. Terms and conditions apply to all permits.
- To view up-to-date maps or apply online, please visit: yukon.ca
- For support email: forestry@yukon.ca
Data Sources: Yukon Government, Geomatics Yukon, and Forest Management Branch



Terms & Conditions Reference:

N/A


Personal Use Fuelwood Cutting Areas

Map: Ross River 8

Location: East of Ross River / Robert Campbell

Map produced on: April 02, 2024
Map expires on: March 31, 2025

Personal Use Fuelwood Areas

 Designated Areas with additional terms and conditions

 Designated Areas

Features of Interest

 Gate Locations

 Designated Access Points

Land Tenure

 Municipal Boundaries

 Land Dispositions

 Surveyed Land Parcels

 Land Notations

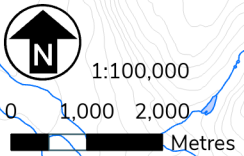
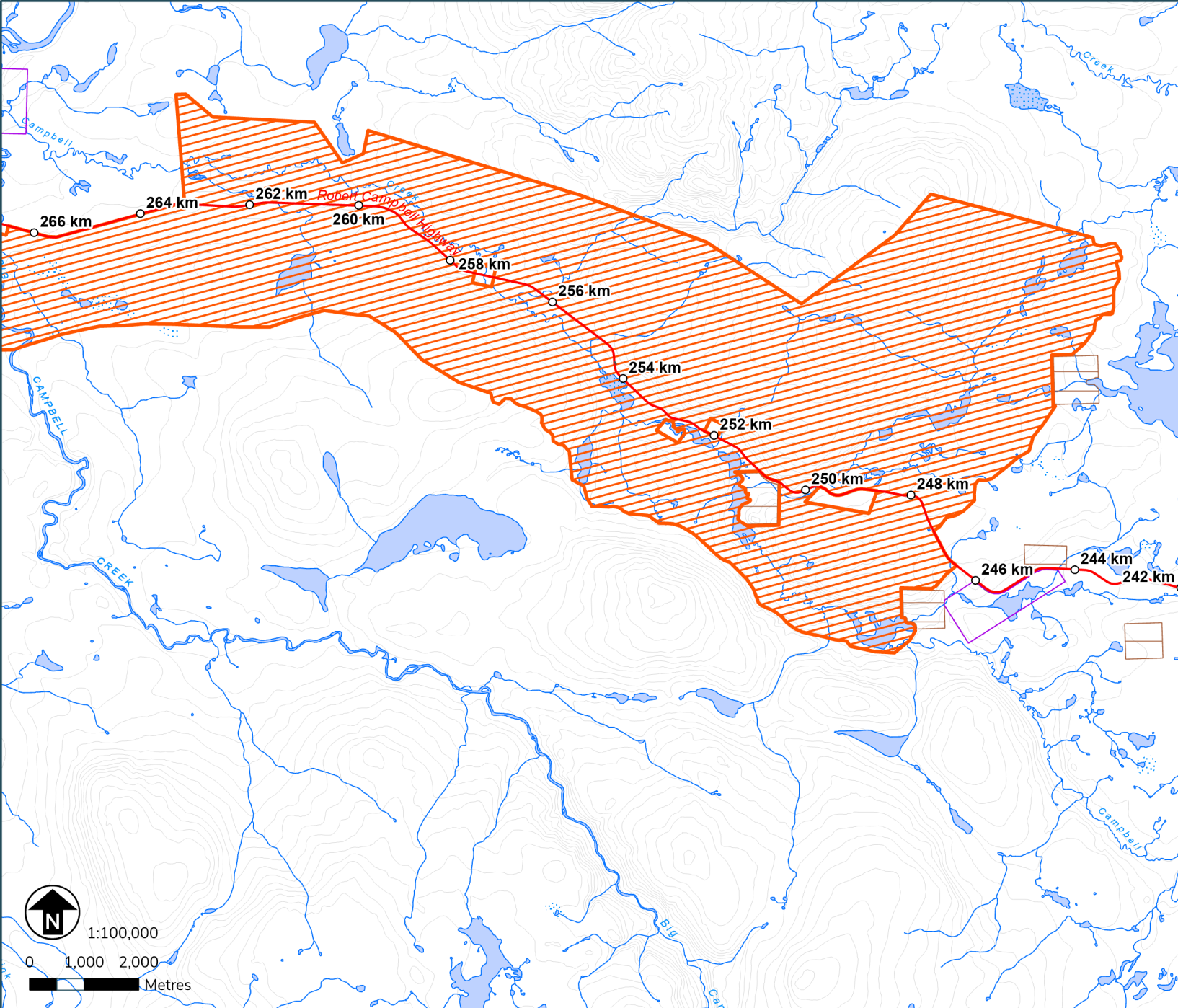
 Parks and Protected Areas

First Nation Settlement Lands

 Surveyed First Nation Settlement Lands

 Unsurveyed FN Interim Protected Lands

 Unsurveyed FN Settlement Lands



Terms & Conditions Reference:

N/A

This map is not your permit. Permits can be acquired at Compliance, Monitoring and Inspections offices or online. Terms and conditions apply to all permits.
- To view up-to-date maps or apply online, please visit: yukon.ca
- For support email: forestry@yukon.ca
Data Sources: Yukon Government, Geomatics Yukon, and Forest Management Branch



Personal Use Fuelwood Cutting Areas


Map: Ross River 9

Location: North Canol Road

Map produced on: April 02, 2024

Map expires on: March 31, 2025

Personal Use Fuelwood Areas

 Designated Areas with additional terms and conditions

 Designated Areas

Features of Interest

 Gate Locations

 Designated Access Points

Land Tenure

 Municipal Boundaries

 Land Dispositions

 Surveyed Land Parcels

 Land Notations

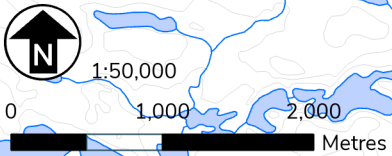
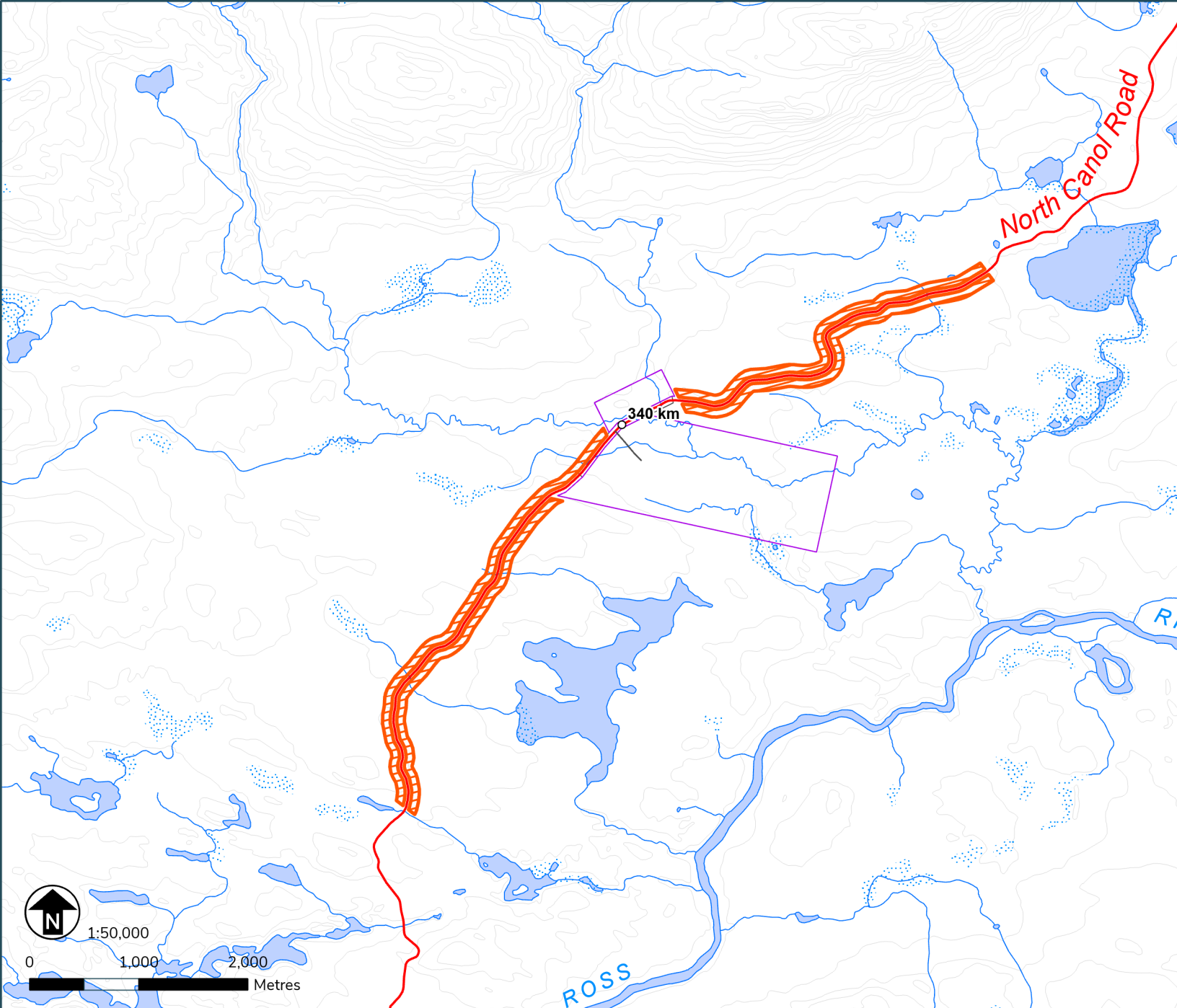
 Parks and Protected Areas

First Nation Settlement Lands

 Surveyed First Nation Settlement Lands

 Unsurveyed FN Interim Protected Lands

 Unsurveyed FN Settlement Lands



Terms & Conditions Reference:

N/A

This map is not your permit. Permits can be acquired at

Compliance, Monitoring and Inspections offices or online. Terms and conditions apply to all permits.

- To view up-to-date maps or apply online, please visit: yukon.ca

- For support email: forestry@yukon.ca

Data Sources: Yukon Government, Geomatics Yukon, and Forest Management Branch

