

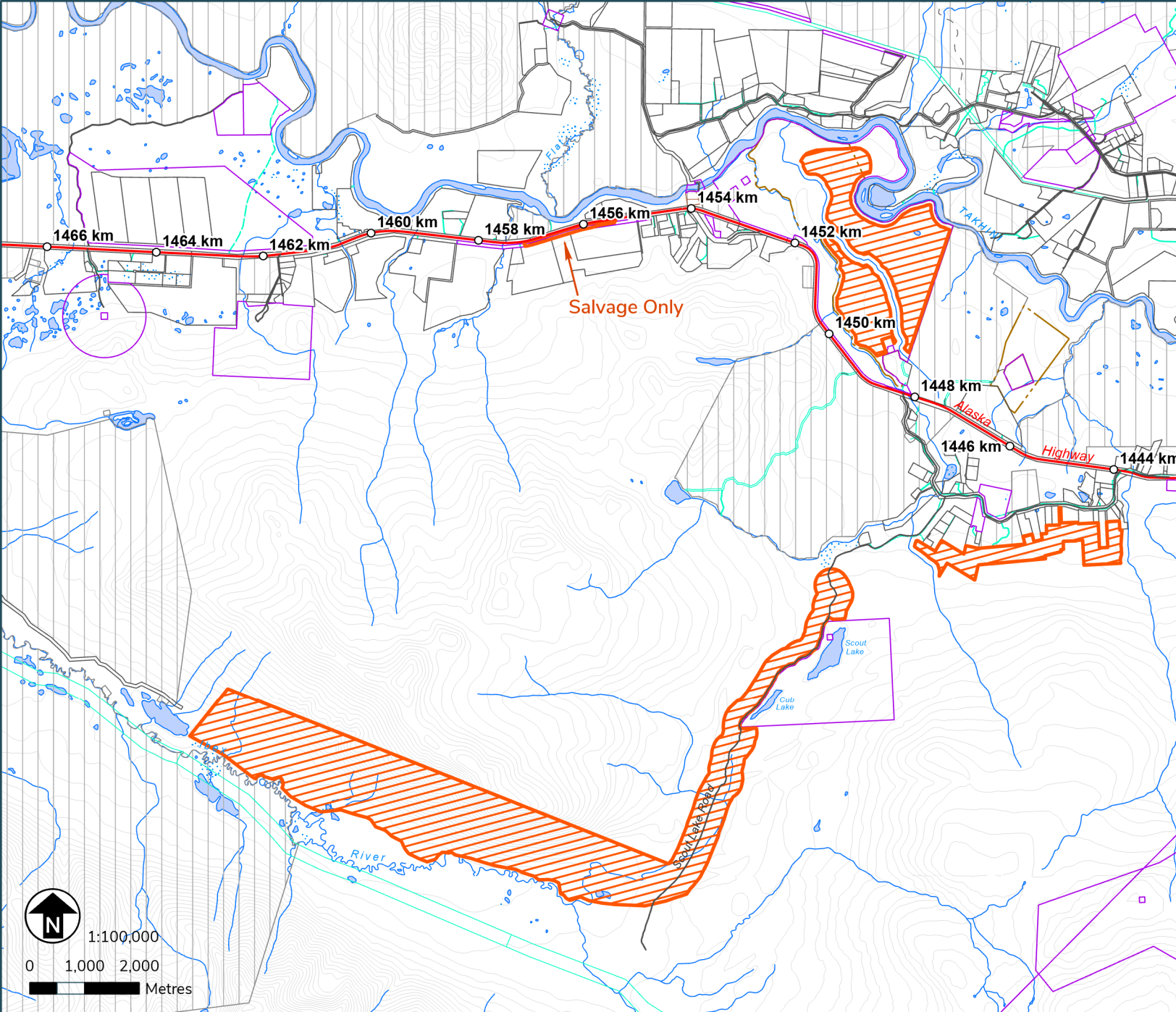
Personal Use Fuelwood Cutting Areas

Map: Whitehorse West 1



Location: Scout Lake / Ibex Valley

Map produced on: April 02, 2024



Map expires on: March 31, 2025




Personal Use Fuelwood Areas

-  Designated Areas with additional terms and conditions
-  Designated Areas




Features of Interest

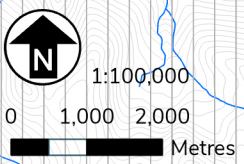
-  Gate Locations
-  Designated Access Points

Land Tenure

-  Municipal Boundaries
-  Land Dispositions
-  Surveyed Land Parcels
-  Land Notations
-  Parks and Protected Areas

First Nation Settlement Lands

-  Surveyed First Nation Settlement Lands
-  Unsurveyed FN Interim Protected Lands
-  Unsurveyed FN Settlement Lands



Terms & Conditions Reference:

N/A

This map is not your permit. Permits can be acquired at Compliance, Monitoring and Inspections offices or online. Terms and conditions apply to all permits.
 - To view up-to-date maps or apply online, please visit: yukon.ca
 - For support email: forestry@yukon.ca
 Data Sources: Yukon Government, Geomatics Yukon, and Forest Management Branch





Personal Use Fuelwood Cutting Areas



Map: Whitehorse West 3
 Location: City of Whitehorse South

Map produced on: April 02, 2024
 Map expires on: March 31, 2025


Personal Use Fuelwood Areas

-  Designated Areas with additional terms and conditions
-  Designated Areas




Features of Interest

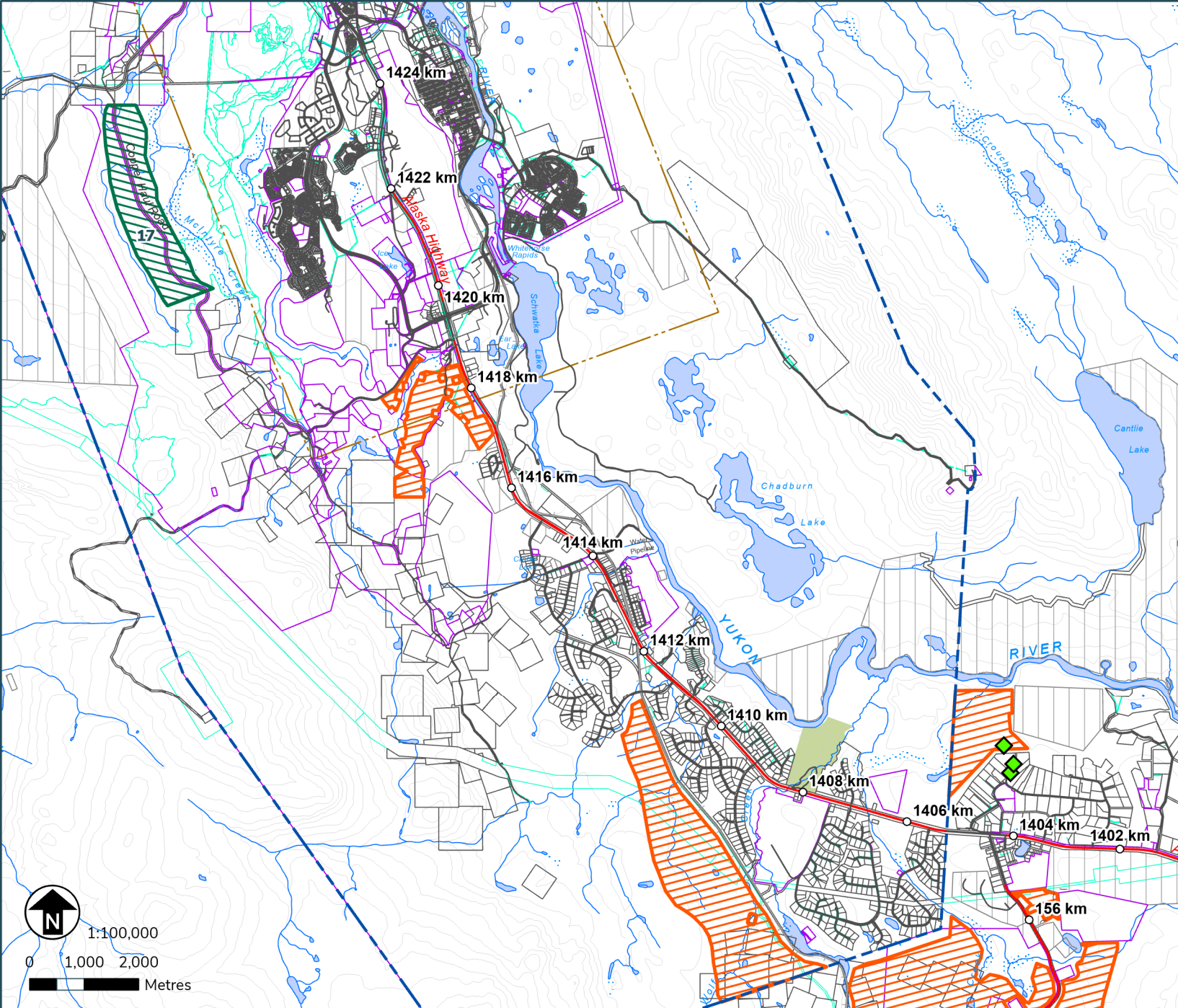
-  Gate Locations
-  Designated Access Points

Land Tenure

-  Municipal Boundaries
-  Land Dispositions
-  Surveyed Land Parcels
-  Land Notations
-  Parks and Protected Areas

First Nation Settlement Lands

-  Surveyed First Nation Settlement Lands
-  Unsurveyed FN Interim Protected Lands
-  Unsurveyed FN Settlement Lands



Terms & Conditions Reference:

17. There are seasonal restrictions to harvesting. Harvesting in this area is not permitted from November 1 to April 30.

This map is not your permit. Permits can be acquired at Compliance, Monitoring and Inspections offices or online. Terms and conditions apply to all permits.

- To view up-to-date maps or apply online, please visit: yukon.ca
- For support email: forestry@yukon.ca

Data Sources: Yukon Government, Geomatics Yukon, and Forest Management Branch



Personal Use Fuelwood Cutting Areas


Map: Whitehorse West 4

Location: Carcross Cutoff

Map produced on: April 02, 2024

Map expires on: March 31, 2025

Personal Use Fuelwood Areas

 Designated Areas with additional terms and conditions

 Designated Areas

Features of Interest

 Gate Locations

 Designated Access Points

Land Tenure

 Municipal Boundaries

 Land Dispositions

 Surveyed Land Parcels

 Land Notations

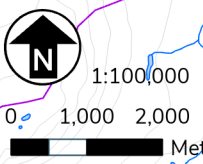
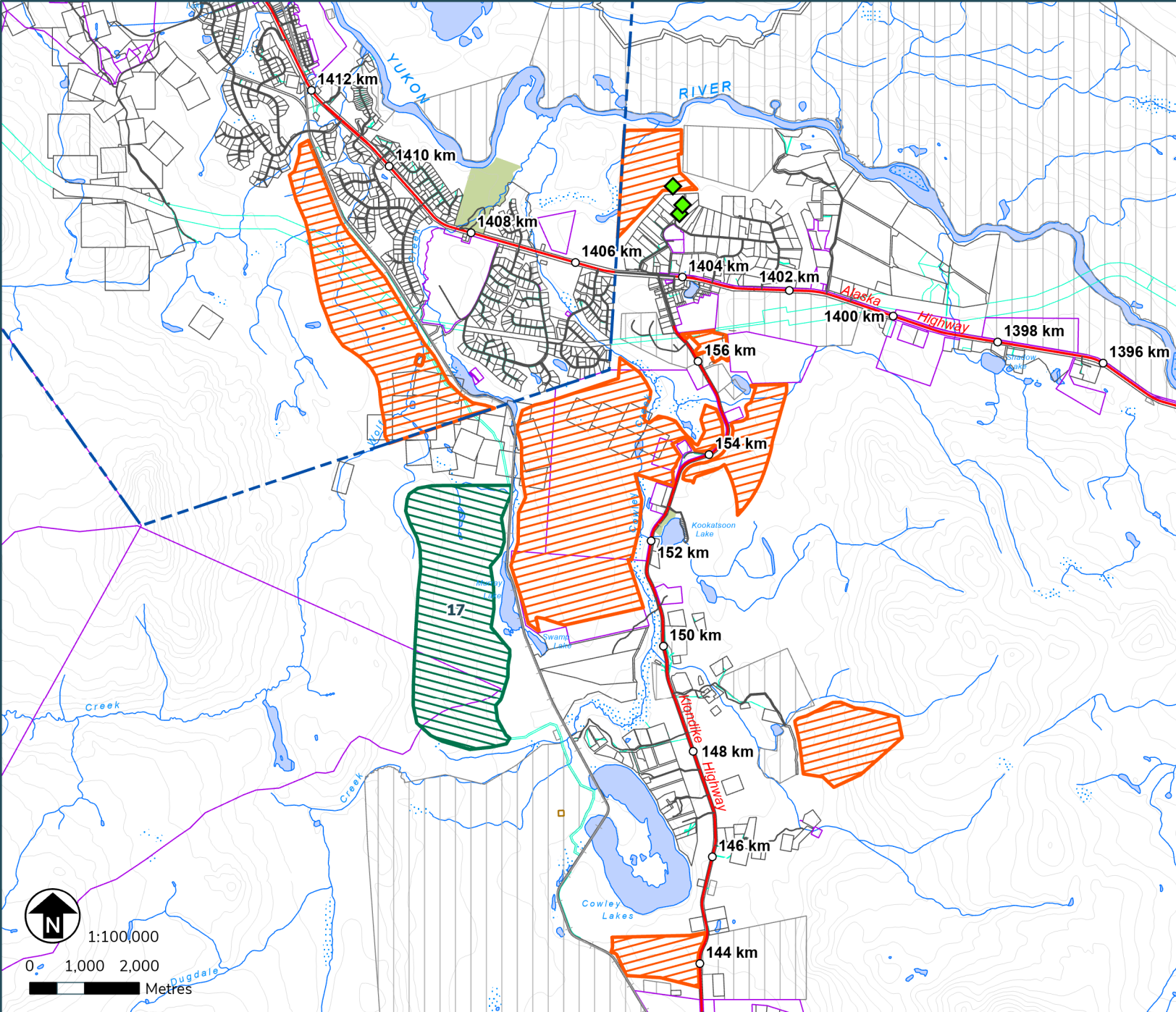
 Parks and Protected Areas

First Nation Settlement Lands

 Surveyed First Nation Settlement Lands

 Unsurveyed FN Interim Protected Lands

 Unsurveyed FN Settlement Lands



Terms & Conditions Reference:

17. There are seasonal restrictions to harvesting. Harvesting in this area is not permitted from November 1 to April 30.

This map is not your permit. Permits can be acquired at Compliance, Monitoring and Inspections offices or online. Terms and conditions apply to all permits.
 - To view up-to-date maps or apply online, please visit: yukon.ca
 - For support email: forestry@yukon.ca
 Data Sources: Yukon Government, Geomatics Yukon, and Forest Management Branch



Personal Use Fuelwood Cutting Areas

Map: Whitehorse West 5

Location: Annie Lake Road


Map produced on: April 02, 2024

Map expires on: March 31, 2025

Annie Lake Golf Course Special Terms and Conditions

- The Permittee is prohibited at all times from using wheeled vehicles on the Annie Lake Golf Course fairway.
- The Permittee must not leave any debris resulting from timber harvest activities on the Annie Lake Golf Course fairway.
- The Permittee must at all times comply with any signage related to the activities authorised by this permit posted in or near the permit area.

Personal Use Fuelwood Areas

 Designated Areas with additional terms and conditions

 Designated Areas

Features of Interest

 Gate Locations

 Designated Access Points

Land Tenure

 Municipal Boundaries

 Land Dispositions

 Surveyed Land Parcels

 Land Notations

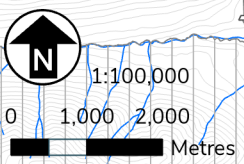
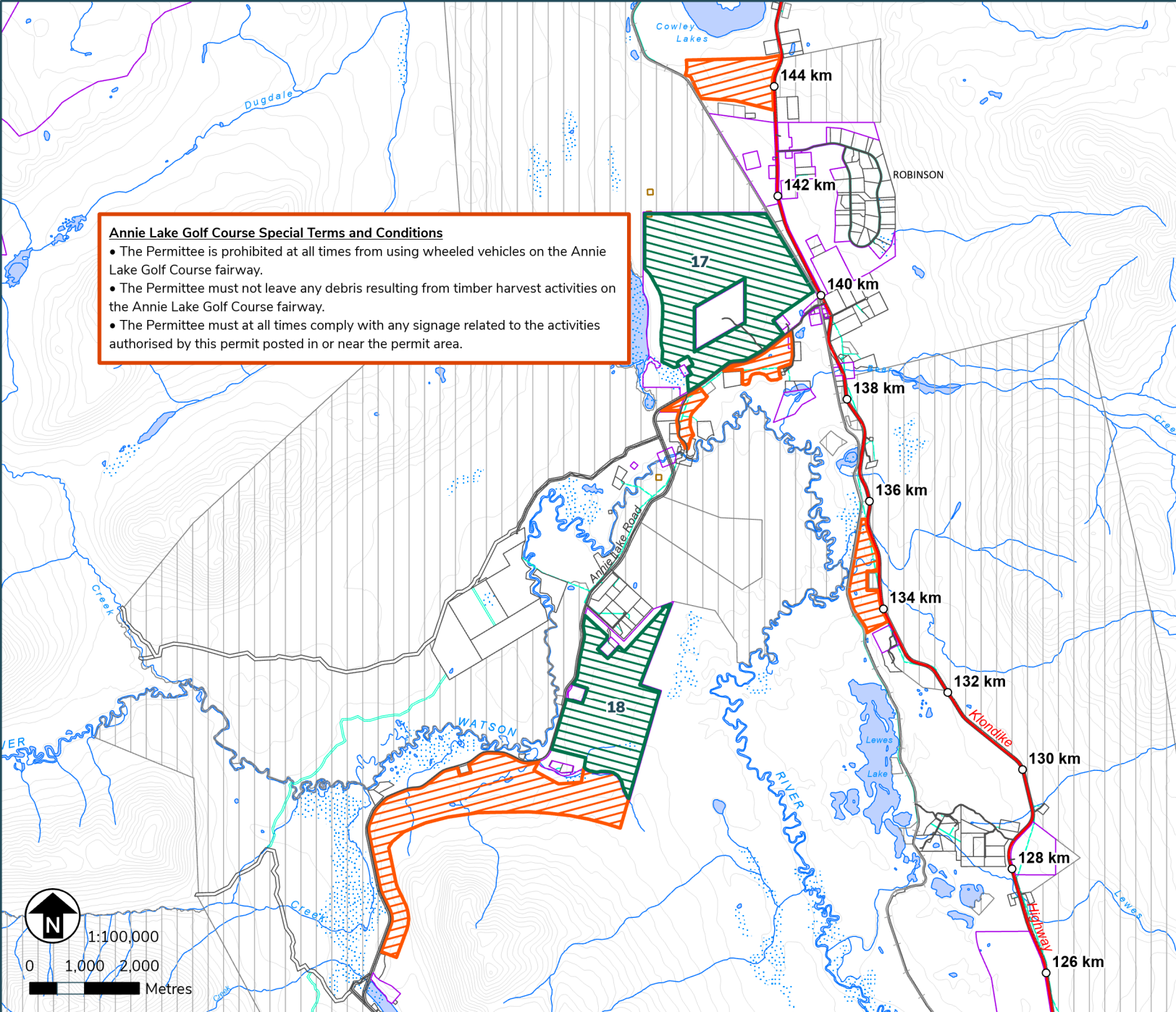
 Parks and Protected Areas

First Nation Settlement Lands

 Surveyed First Nation Settlement Lands

 Unsurveyed FN Interim Protected Lands

 Unsurveyed FN Settlement Lands



This map is not your permit. Permits can be acquired at Compliance, Monitoring and Inspections offices or online. Terms and conditions apply to all permits.
 - To view up-to-date maps or apply online, please visit: yukon.ca
 - For support email: forestry@yukon.ca
 Data Sources: Yukon Government, Geomatics Yukon, and Forest Management Branch



Terms & Conditions Reference:

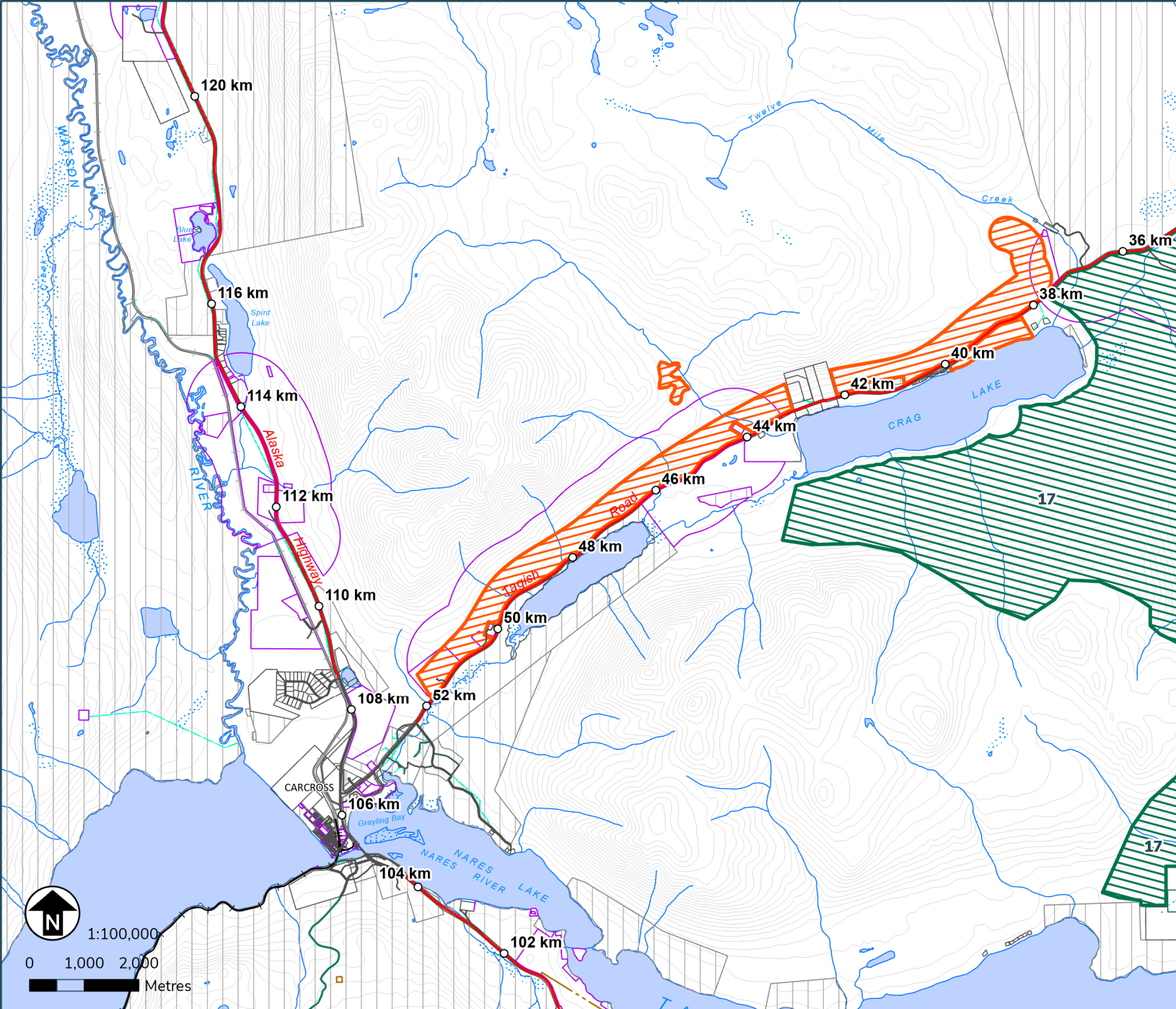
- 17. There are seasonal restrictions to harvesting. Harvesting in this area is not permitted from November 1 to April 30.
- 18. There are seasonal restrictions to harvesting. Harvesting in this area is not permitted from January 1 to March 31.

Personal Use Fuelwood Cutting Areas

Map: Whitehorse West 6
Location: Carcross / Crag Lake

Map produced on: April 02, 2024
Map expires on: March 31, 2025

- Personal Use Fuelwood Areas**
- Designated Areas with additional terms and conditions
 - Designated Areas
- Features of Interest**
- Gate Locations
 - Designated Access Points
- Land Tenure**
- Municipal Boundaries
 - Land Dispositions
 - Surveyed Land Parcels
 - Land Notations
 - Parks and Protected Areas
- First Nation Settlement Lands**
- Surveyed First Nation Settlement Lands
 - Unsurveyed FN Interim Protected Lands
 - Unsurveyed FN Settlement Lands



Terms & Conditions Reference:

17. There are seasonal restrictions to harvesting. Harvesting in this area is not permitted from November 1 to April 30.

This map is not your permit. Permits can be acquired at Compliance, Monitoring and Inspections offices or online. Terms and conditions apply to all permits.

- To view up-to-date maps or apply online, please visit: yukon.ca
- For support email: forestry@yukon.ca

Data Sources: Yukon Government, Geomatics Yukon, and Forest Management Branch




Personal Use Fuelwood Cutting Areas

Map: Whitehorse West 7
 Location: Tagish Road / Ten Mile

Map produced on: April 02, 2024
 Map expires on: March 31, 2025

Personal Use Fuelwood Areas

 Designated Areas with additional terms and conditions

 Designated Areas

Features of Interest

 Gate Locations

 Designated Access Points

Land Tenure

 Municipal Boundaries

 Land Dispositions

 Surveyed Land Parcels

 Land Notations

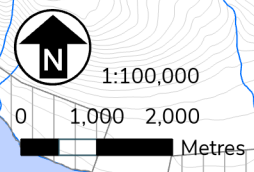
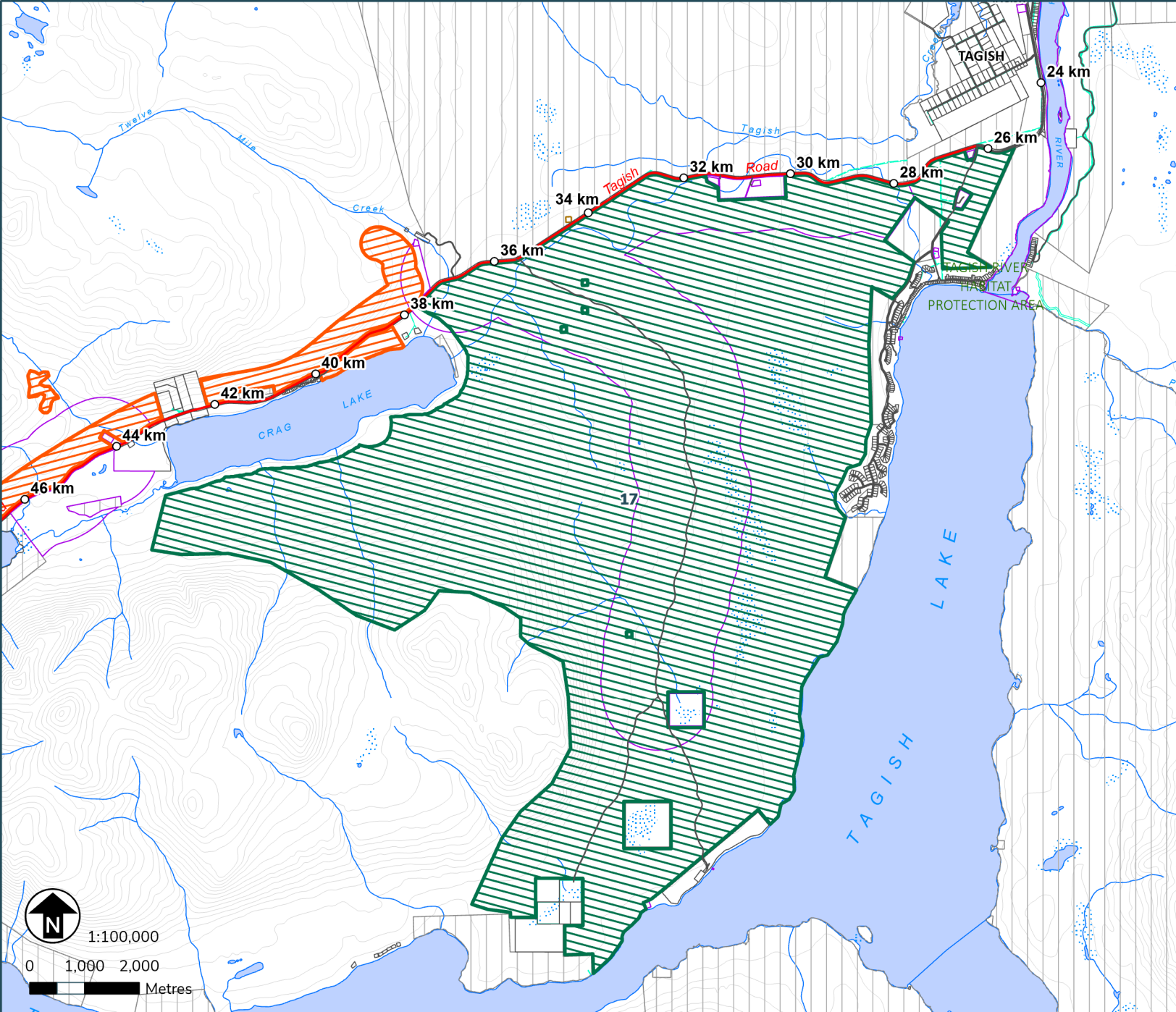
 Parks and Protected Areas

First Nation Settlement Lands

 Surveyed First Nation Settlement Lands

 Unsurveyed FN Interim Protected Lands

 Unsurveyed FN Settlement Lands



Terms & Conditions Reference:

17. There are seasonal restrictions to harvesting. Harvesting in this area is not permitted from November 1 to April 30.

This map is not your permit. Permits can be acquired at Compliance, Monitoring and Inspections offices or online. Terms and conditions apply to all permits.
 - To view up-to-date maps or apply online, please visit: yukon.ca
 - For support email: forestry@yukon.ca
 Data Sources: Yukon Government, Geomatics Yukon, and Forest Management Branch

