










Personal Use Fuelwood Cutting Areas


Map: Whitehorse East 1
 Location: Lewes Marsh / Army Beach

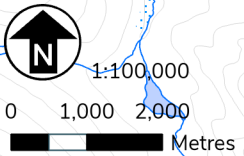
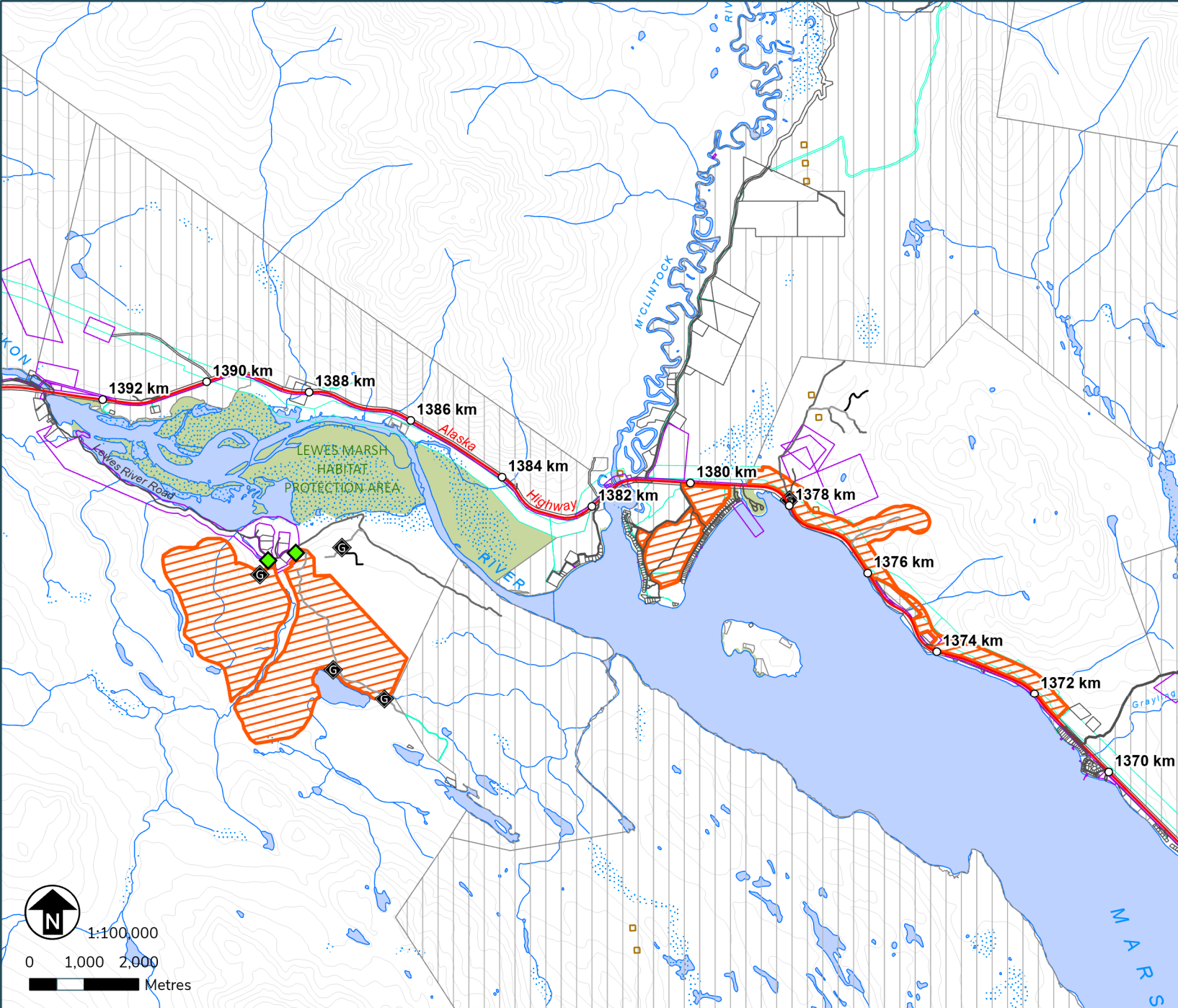
Map produced on: April 02, 2024
 Map expires on: March 31, 2025

Personal Use Fuelwood Areas
 Designated Areas with additional terms and conditions
 Designated Areas

Features of Interest
 Gate Locations
 Designated Access Points

Land Tenure
 Municipal Boundaries
 Land Dispositions
 Surveyed Land Parcels
 Land Notations
 Parks and Protected Areas

First Nation Settlement Lands
 Surveyed First Nation Settlement Lands
 Unsurveyed FN Interim Protected Lands
 Unsurveyed FN Settlement Lands



Terms & Conditions Reference:

N/A

This map is not your permit. Permits can be acquired at Compliance, Monitoring and Inspections offices or online. Terms and conditions apply to all permits.
 - To view up-to-date maps or apply online, please visit: yukon.ca
 - For support email: forestry@yukon.ca
 Data Sources: Yukon Government, Geomatics Yukon, and Forest Management Branch




Personal Use Fuelwood Cutting Areas

Map: Whitehorse East 2

Location: Judas Creek

Map produced on: April 02, 2024
Map expires on: March 31, 2025

Personal Use Fuelwood Areas

 Designated Areas with additional terms and conditions

 Designated Areas

Features of Interest

 Gate Locations

 Designated Access Points

Land Tenure

 Municipal Boundaries

 Land Dispositions

 Surveyed Land Parcels

 Land Notations

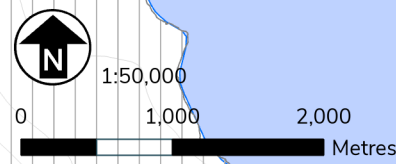
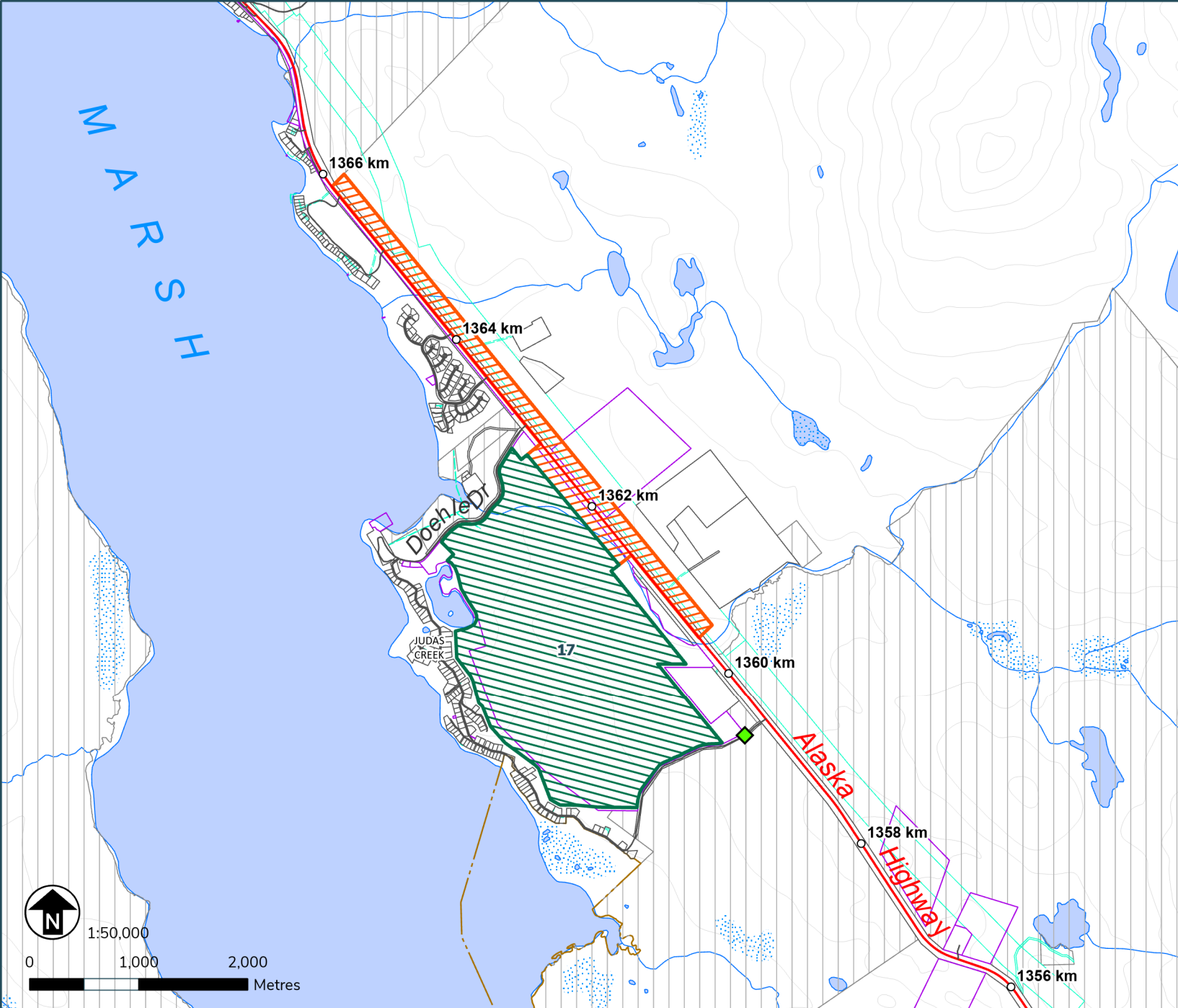
 Parks and Protected Areas

First Nation Settlement Lands

 Surveyed First Nation Settlement Lands

 Unsurveyed FN Interim Protected Lands

 Unsurveyed FN Settlement Lands



Terms & Conditions Reference:

17. There are seasonal restrictions to harvesting. Harvesting in this area is not permitted from November 1 to April 30.

This map is not your permit. Permits can be acquired at Compliance, Monitoring and Inspections offices or online. Terms and conditions apply to all permits.
- To view up-to-date maps or apply online, please visit: yukon.ca
- For support email: forestry@yukon.ca
Data Sources: Yukon Government, Geomatics Yukon, and Forest Management Branch




Personal Use Fuelwood Cutting Areas

Map: Whitehorse East 3

Location: Jake's Corner

Map produced on: April 02, 2024
Map expires on: March 31, 2025

Personal Use Fuelwood Areas

 Designated Areas with additional terms and conditions

 Designated Areas

Features of Interest

 Gate Locations

 Designated Access Points

Land Tenure

 Municipal Boundaries

 Land Dispositions

 Surveyed Land Parcels

 Land Notations

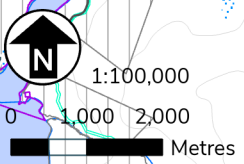
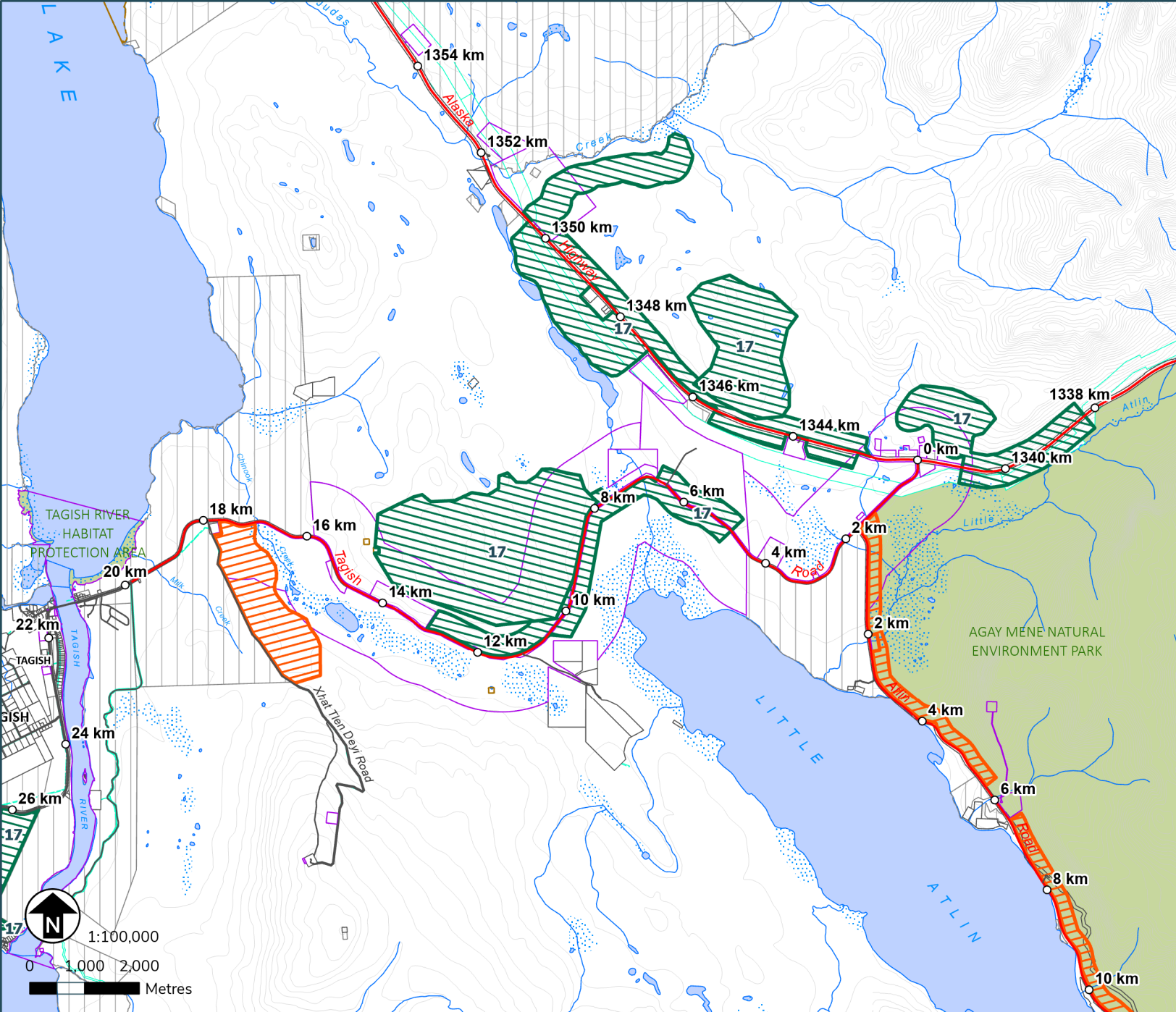
 Parks and Protected Areas

First Nation Settlement Lands

 Surveyed First Nation Settlement Lands

 Unsurveyed FN Interim Protected Lands

 Unsurveyed FN Settlement Lands



Terms & Conditions Reference:

17. There are seasonal restrictions to harvesting. Harvesting in this area is not permitted from November 1 to April 30.

This map is not your permit. Permits can be acquired at Compliance, Monitoring and Inspections offices or online. Terms and conditions apply to all permits.
- To view up-to-date maps or apply online, please visit: yukon.ca
- For support email: forestry@yukon.ca
Data Sources: Yukon Government, Geomatics Yukon, and Forest Management Branch



Personal Use Fuelwood Cutting Areas


Map: Whitehorse East 4

Location: Little Atlin Lake

Map produced on: April 02, 2024

Map expires on: March 31, 2025

Personal Use Fuelwood Areas

 Designated Areas with additional terms and conditions

 Designated Areas

Features of Interest

 Gate Locations

 Designated Access Points

Land Tenure

 Municipal Boundaries

 Land Dispositions

 Surveyed Land Parcels

 Land Notations

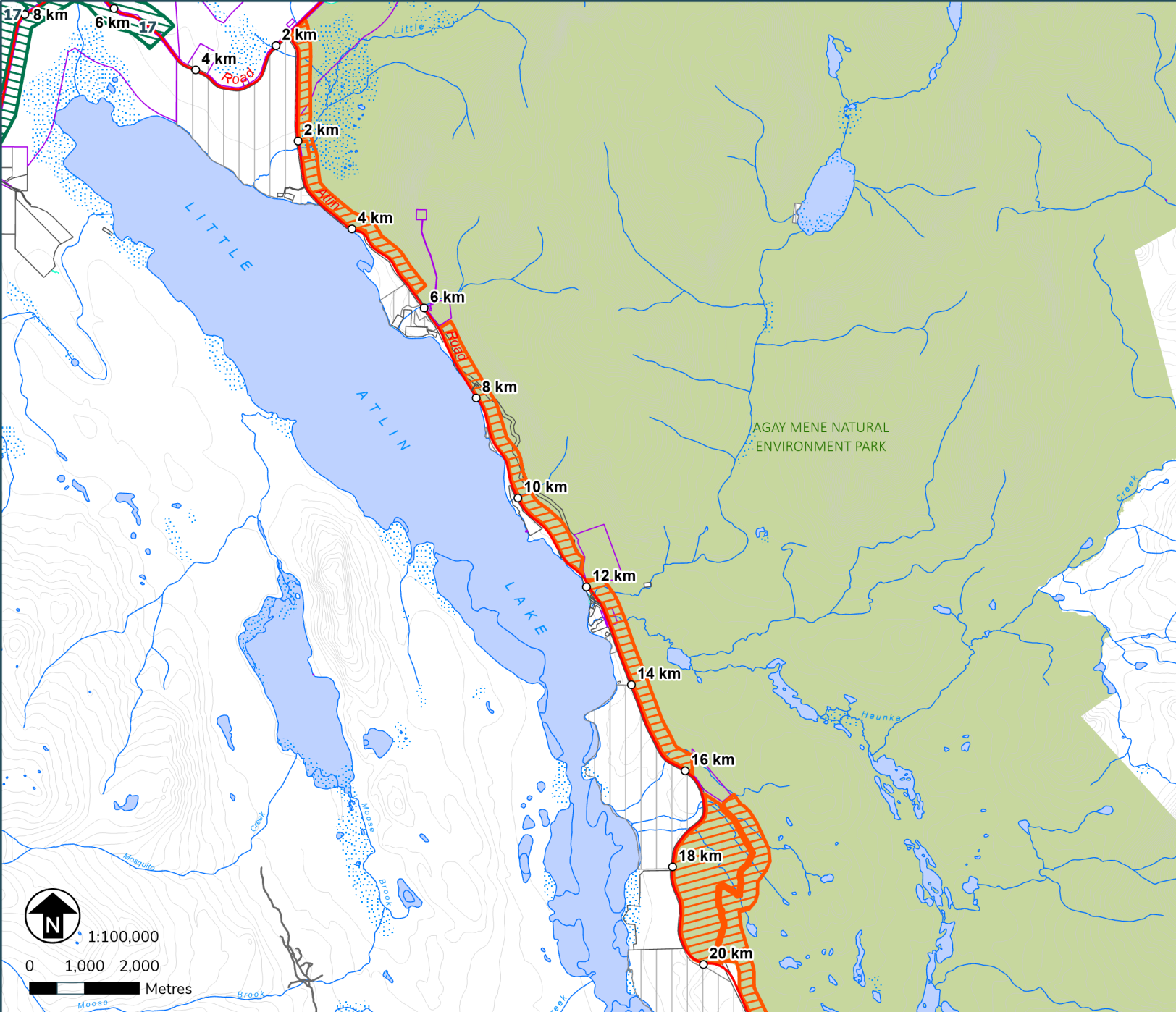
 Parks and Protected Areas

First Nation Settlement Lands

 Surveyed First Nation Settlement Lands

 Unsurveyed FN Interim Protected Lands

 Unsurveyed FN Settlement Lands



Terms & Conditions Reference:

18. There are seasonal restrictions to harvesting. Harvesting in this area is not permitted from January 1 to March 31.

This map is not your permit. Permits can be acquired at Compliance, Monitoring and Inspections offices or online. Terms and conditions apply to all permits.

- To view up-to-date maps or apply online, please visit: yukon.ca

- For support email: forestry@yukon.ca

Data Sources: Yukon Government, Geomatics Yukon, and Forest Management Branch




Personal Use Fuelwood Cutting Areas

Map: Whitehorse East 5

Location: Atlin Road / Tarfu Lake

Map produced on: April 02, 2024
Map expires on: March 31, 2025

Personal Use Fuelwood Areas

 Designated Areas with additional terms and conditions

 Designated Areas

Features of Interest

 Gate Locations

 Designated Access Points

Land Tenure

 Municipal Boundaries

 Land Dispositions

 Surveyed Land Parcels

 Land Notations

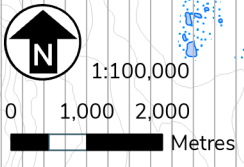
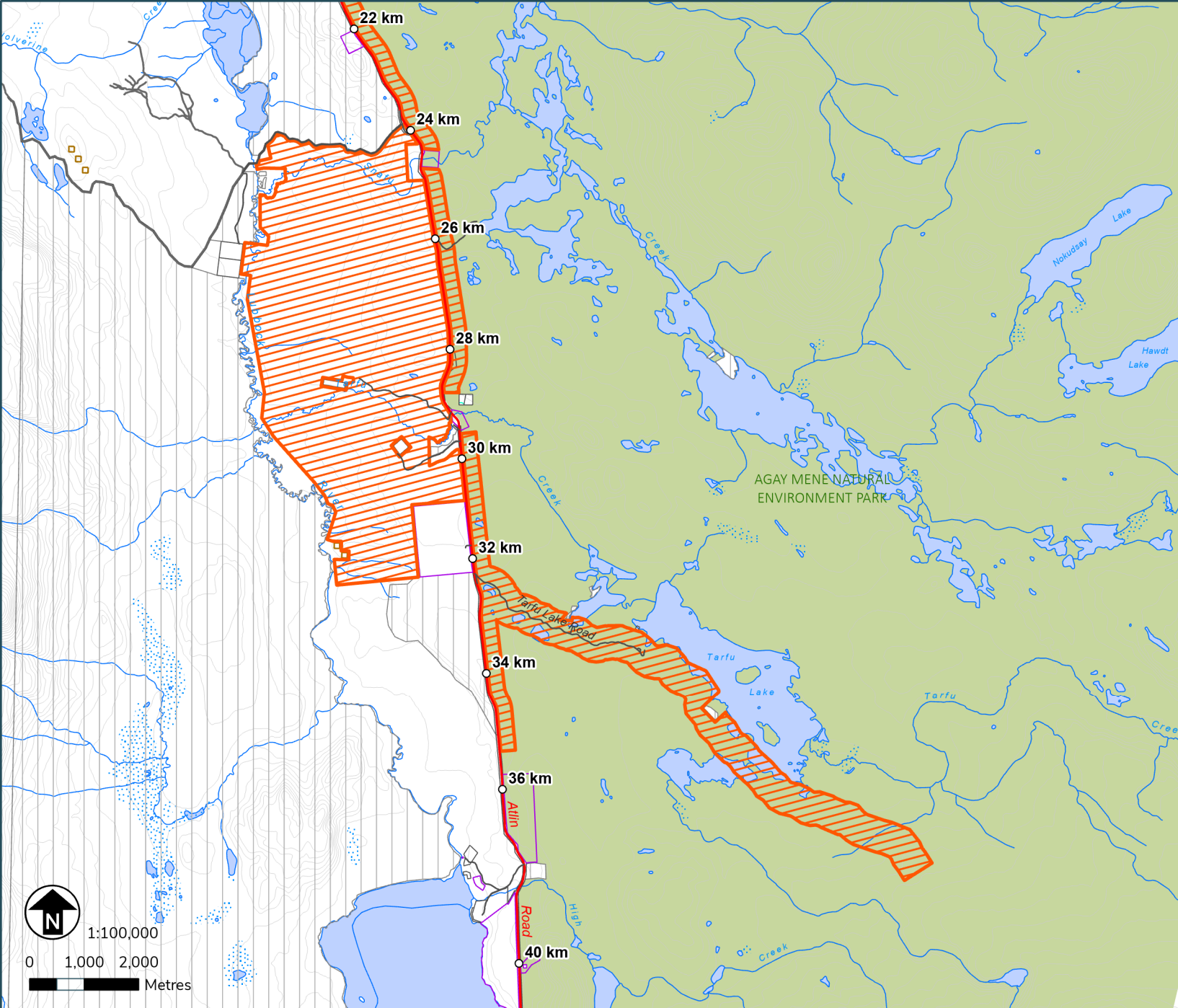
 Parks and Protected Areas

First Nation Settlement Lands

 Surveyed First Nation Settlement Lands

 Unsurveyed FN Interim Protected Lands

 Unsurveyed FN Settlement Lands



Terms & Conditions Reference:

N/A

This map is not your permit. Permits can be acquired at Compliance, Monitoring and Inspections offices or online. Terms and conditions apply to all permits.
- To view up-to-date maps or apply online, please visit: yukon.ca
- For support email: forestry@yukon.ca
Data Sources: Yukon Government, Geomatics Yukon, and Forest Management Branch




Personal Use Fuelwood Cutting Areas

Map: Whitehorse East 6

Location: Summit Lake / Squanga Lake

Map produced on: April 02, 2024
Map expires on: March 31, 2025

Personal Use Fuelwood Areas

 Designated Areas with additional terms and conditions

 Designated Areas

Features of Interest

 Gate Locations

 Designated Access Points

Land Tenure

 Municipal Boundaries

 Land Dispositions

 Surveyed Land Parcels

 Land Notations

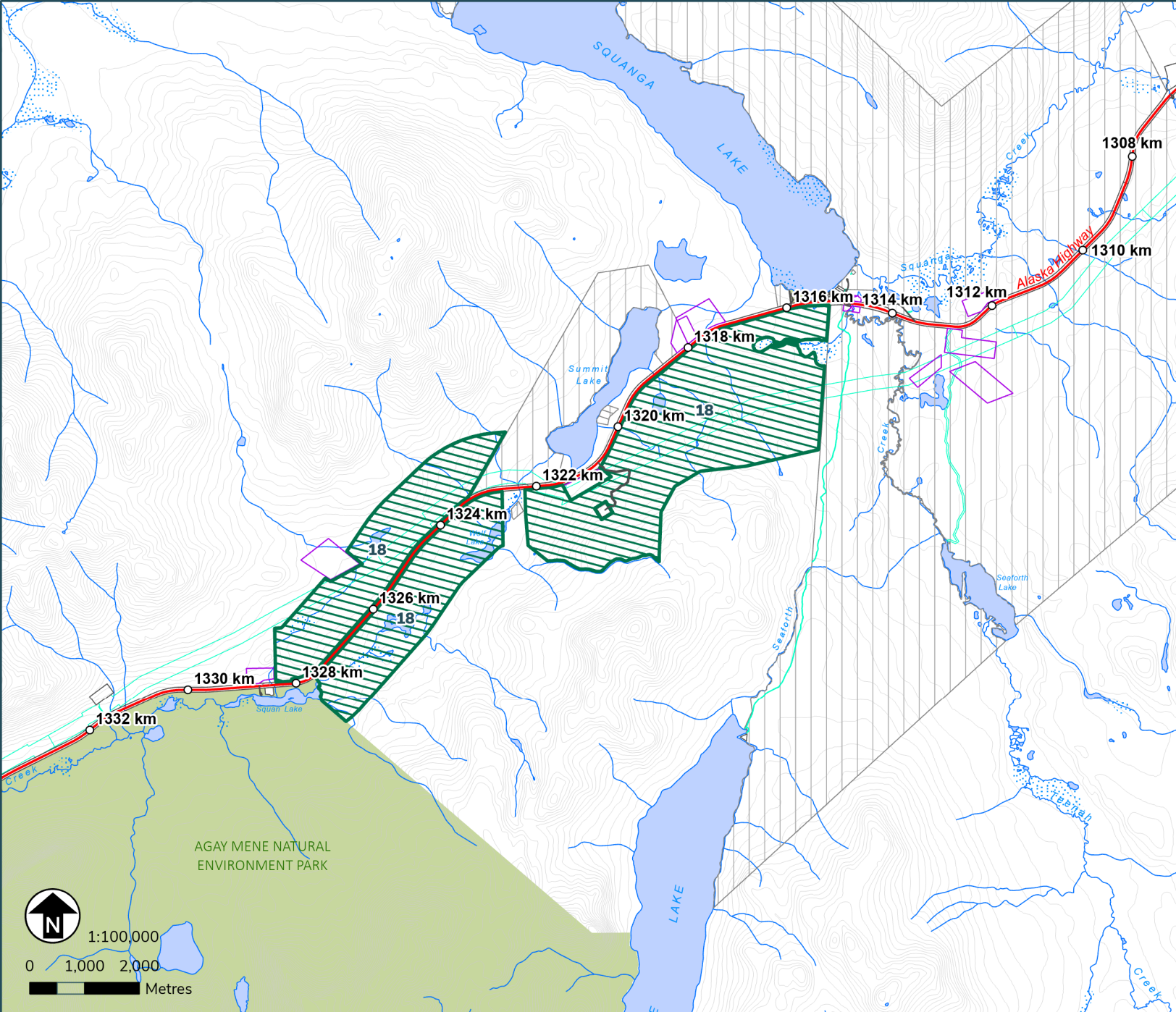
 Parks and Protected Areas

First Nation Settlement Lands

 Surveyed First Nation Settlement Lands

 Unsurveyed FN Interim Protected Lands

 Unsurveyed FN Settlement Lands



Terms & Conditions Reference:

18. There are seasonal restrictions to harvesting. Harvesting in this area is not permitted from January 1 to March 31.

This map is not your permit. Permits can be acquired at Compliance, Monitoring and Inspections offices or online. Terms and conditions apply to all permits.

- To view up-to-date maps or apply online, please visit: yukon.ca
- For support email: forestry@yukon.ca

Data Sources: Yukon Government, Geomatics Yukon, and Forest Management Branch

